

New Brighton

WINTER 2019

A Year with
the New
Eagles Nest



Closest Unit Dispatching

Utility Rates
for 2019



2019 City Meetings

City Council Business Meetings

When: The second and fourth Tuesday of each month at 6:30 pm

Where: City Council Chambers

City Council Worksessions

When: The first, second and fourth Tuesday of each month at 5:00 pm

Where: City Hall Conference Room

Economic Development Commission Business Meetings

When: The first Wednesday of each month at 7:30 am

Where: City Hall Conference Room

Parks, Recreation and Environmental Commission Business Meetings

When: The first Wednesday of each month at 6:30 pm

Where: City Council Chambers

Planning Commission Business Meetings

When: The third Tuesday of each month at 7:00 pm

Where: City Council Chambers

Public Safety Commission Business Meetings

When: The second Monday of each month at 6:30 pm

Where: City Council Chambers

Fire Relief Association Business Meetings

When: The third Monday of the month at 7:30 pm

Where: Public Safety Center

All meetings are open to the public. Please visit the City website or call City Hall for information about cancellations.

Mayor

Val Johnson

Council Members

Graeme Allen

Mary Burg

Emily Dunsworth

Paul Jacobsen

City Manager

Dean Lotter

CONTACT US

City Hall: 651-638-2100

Community Center: 651-638-2130

Public Safety Center: 651-288-4100

Maintenance Facility: 651-638-2111

Brightwood Hills Golf Course: 651-638-2150

Official Publication of the City of New Brighton

www.newbrightonmn.gov



WINTER 2019

In this Issue

ADMINISTRATION

Apply to be a Commissioner.... 4

PUBLIC SAFETY

"Squad Car Bakery" 5

Faith Partnership..... 6

FINANCE

Driver's Licenses 7

2019 Budget 8

2019 Utility Rates 9

COVER STORY

Closest Unit 10-13

COMMUNITY ASSETS & DEVELOPMENT

Winter Planning 14-15

DCAD Updates 16-17

PARKS AND RECREATION

Help Wanted 18

Eagles Nest..... 19

CALENDAR Backside



LETTER FROM THE CITY MANAGER

Favorite on the Field

Everyone listen for the collective groan. I am a Green Bay Packer fan. Wait! Do not stop reading just yet. You may or may not like the Packers, the Vikings or football in general, but I promise I have a point and will raise it soon if you will indulge me a few more sentences.

Think of sport in general. What makes sport fun? Certainly being interested in it. Some people gravitate towards tennis, some baseball, others soccer and then there are people like me. Usually beyond the interest in the sport in general, people develop an interest in certain teams and players. As a Packers fan it may not surprise you that I am an Aaron Rodgers fan. I am sure a lot of Vikings fans went out and bought a Stefon Diggs jersey after his athletic and heart stopping last second touchdown against the Saints in last year's playoff game.

Life is funny. It's easy to overlook those who make a big difference. Ironic if you will, but as impactful as Rodgers and Diggs may be to their respective teams, I have come to realize that they are not the most important people on the field. In fact, no player is. No player or coach is the most important player on the field. I realize I may be losing some readers right now, but you have indulged me this far. Please consider reading on a bit further. I am preparing for a second collective groan, but the most important people on the field are the referees.

A game is meaningless without rules. The rules delineate a legal catch, block, or play from ones that are illegal or not allowed. Ask yourself this question.

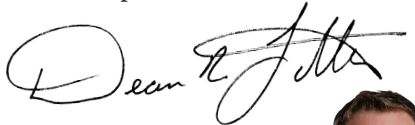
Assuming your team is the Vikings and that they just lost a big game; how often or likely is it for people to complain about the poor refereeing? I know when the Packers lose a game, I often complain about the refereeing. Vacate all the rules and get rid of the referees and you don't have a game anymore. Some rules are plain stupid and should be adjusted or gotten rid of so the game is better. In the end though, rules matter and they provide meaning, but only when applied equally. I am not saying the referees don't make mistakes, but generally they attempt to do the best job they can. I have done my share of complaining about referees, but I don't want to get rid of them.

Why does this matter? Well, government has many rules/laws, processes and procedures. Elected officials and staff can often times find themselves attempting to referee neighbor disputes or complaints. When it really comes down to it, we need laws to live by. We just need them to be sensible and enforced fairly. For example, when a resident requests a zoning code variance, the City reviews the application not just for compliance with the written ordinance, but also how the proposed change to one property may affect other neighboring properties. This is done in an effort to mitigate potentially negative impacts to others that live near the property proposing the change or variance.

Sometimes people are happy with the outcomes of these processes or the application of these rules and

sometimes they aren't. The real question is was the rule applied according to established law and practice and applied fairly. New Brighton has finished an almost two-year Comprehensive Plan process. Several public meetings were held with lots of input from residents and businesses. This plan helps update local ordinances such as zoning maps and codes. It's up to elected officials and staff to enforce them while creating balance between the public interest and private property rights.

Spring is only a few months away and that is typically when city staff receives numerous complaints about properties. Just recently Mayor Johnson asked city staff to review our codes and present any changes and improvements to our nuisance codes that will improve the quality of life in New Brighton. As the City contemplates changes or improvements to our nuisance codes, please understand that whatever the result, those rules will be enforced fairly and equally. Just like a referee in a sporting event, sometimes city employees and elected officials are asked to adjudicate or make judgement calls regarding local ordinances or "rules." Not everyone is always happy with the outcome, but we try to be fair and even-handed as possible.



DEAN R. LOTTER

dean.lotter@newbrightonmn.gov





The Parks, Recreation, and Environmental Commission (PREC) advises on the proper use and care of the parks and natural environment, and on policies covering recreation.



The Planning Commission advises on all land use planning matters.



The Economic Development Commission (EDC) advises on matters concerning industrial and commercial development in the City.



The Public Safety Commission advises on the goals, policies, and operation of public safety functions and human rights issues.

Apply to Serve on a Commission

The City of New Brighton is seeking volunteers who are interested in becoming more involved in their community by serving on one of the City's four Municipal Advisory Commissions.

New Brighton's commissions serve as a bridge between the community and local government. They bring community issues to the attention of local government officials, help solicit citizen input and bring a diverse body of citizens together to study issues and make recommendations to the City Council. Typically, commissioners

can expect to attend and participate in monthly meetings.

Generally, Commission applicants must be residents of New Brighton. However, membership of the Economic Development Commission is open to anyone affiliated with a New Brighton business. People of all occupations and experiences are highly encouraged to apply.

Individuals interested in volunteering to serve on a city commission should submit a cover letter, resume and application, indicating which

commission(s) most interest them.

To be considered for appointment, application materials should be submitted to City Clerk Terri Spangrud; New Brighton City Hall; 803 Old Hwy 8 NW; New Brighton, MN 55112 by February 5, 2019. The City Council will be interviewing applicants at worksessions in late February and early March. New terms begin April 1, 2019. Additional information and applications are available on the City website or by stopping by or calling New Brighton City Hall at 651-638-2100.



"Squad Car Bakery"

Beginning in April of 2018, Public Safety staff began working with the Ralph Reeder Food Shelf to distribute excess food items. On Fridays of every week, Police Officers, Reserve Police Officers and Volunteers in Public Safety (VIPS), go to the Ralph Reeder Food Shelf to pick up any food supply that

is excess for the week and deliver it to New Brighton citizens that are in need. The program has been nicknamed "Squad Car Bakery."

This program has been a large success in building Public Safety and community relationships as well as promoting the Ralph Reeder Food

Shelf. The Ralph Reeder Food Shelf is a community education program of the Mounds View School district that primarily serves low income families and is located in the City of Mounds View.

Thanks to a great partnership, the Squad Car Bakery has served over 200 families.



Faith Community Partnership

In January of 2016, the New Brighton Department of Public Safety (NBDPS) hosted a lunchtime meeting with leaders of the many faith communities in the City of New Brighton. The goal of that inaugural meeting was to facilitate conversations between the police and faith communities that could lead to action and build greater relationships

between the two groups and their stakeholders. This police and faith community partnership combines a focus on intervention and prevention by collaborating and problem solving with faith communities across all denominations in the City of New Brighton.

Officer Matt Farmer currently serves as the Liaison to the Faith Community

Partnership. Officer Farmer hosts quarterly meetings to discuss current issues facing law enforcement and the New Brighton community, pertinent topics such as church safety and security, and community engagement. Together, members have partnered on several community outreach events, taken steps to make houses of worship safer, and worked to prevent crime and disorder.

Public Safety Spotlight Keeps You Updated

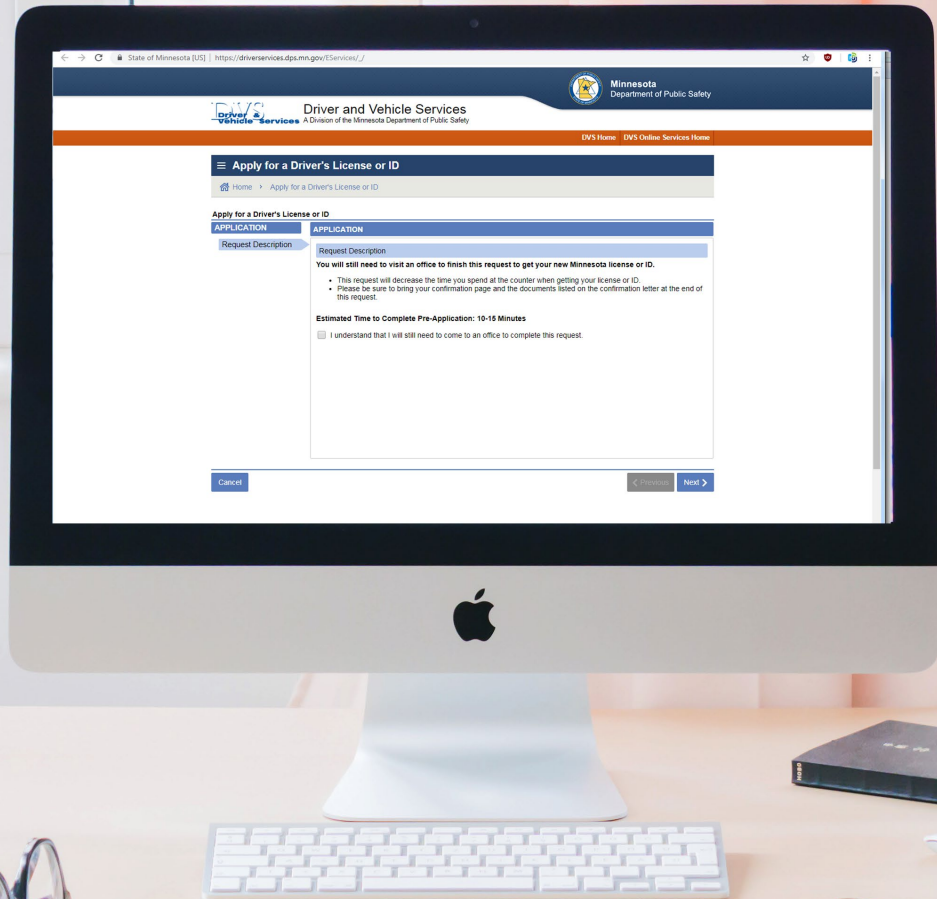
For over 15 years, New Brighton Public Safety has partnered with CTV North Suburbs to run a local cable television show called Public Safety Spotlight. The show is aired on a monthly basis and consists of certain public safety related topics. This year the New Brighton Department of Public

Safety was honored to receive the Hall of Fame Award at the CTV North Suburbs annual awards banquet. Tune in to local CTV North Suburbs to learn about the New Brighton Department of Public Safety and get some very important public safety related information.



Helpful Tip

Before finalizing your pre-application, make sure you actually have access to the documentation you selected! You will be required to provide these documents in-office.



Pre-Apply for a Driver's License or ID

Minnesota Driver and Vehicle Services now offers an online “pre-application” for driver’s license applicants. A significant portion of the application information can be entered online before arriving at our license bureau, decreasing the time you will need to spend at the counter. This pre-application replaces the paper application that you would have otherwise completed at our office. It also

helps you to determine which documents you will be required to provide in person.

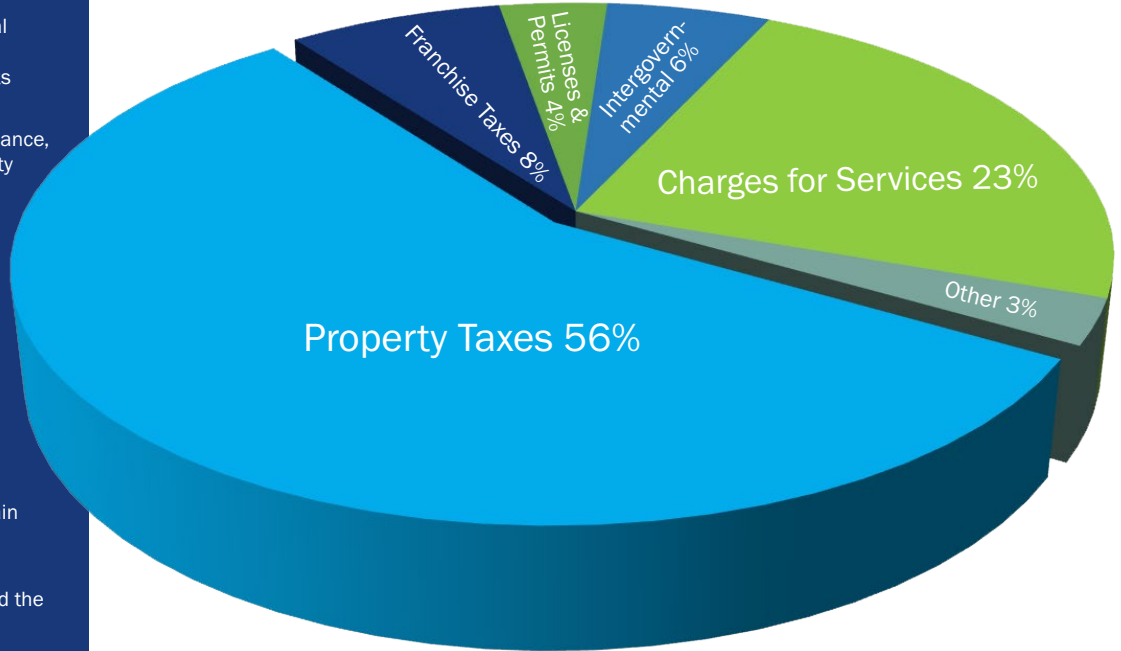
If you forget to complete the pre-application before visiting our office, it’s not too late! This feature is compatible with mobile devices, so you still have the option to complete it while waiting in our lobby. It can be used for both standard driver’s license applications and REAL ID applications.



KEY BUDGET ITEMS

- Continued reallocation of Local Government Aid (LGA) from the General Fund and into the Streets Program
- New personnel requests in Finance, License Bureau, and Public Safety
- Funding for the debt payment on the 2019 street reconstruction project
- Reduced funding for the repayment of the debt payments for the 2017 and 2018 street reconstruction projects
- Reduced funding for the early retirement of 2011A and 2012A debt obligations
- Increased expenditures to retain and recruit employees
- Increase in revenue generated from recreation programming and the Eagles Nest

Revenue Sources



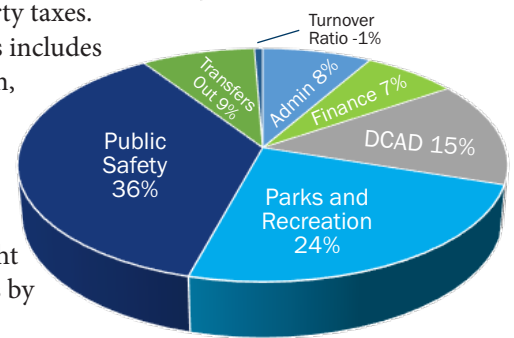
General Fund Budget 2019

The 2019 General Fund Budget was adopted on December 11, 2018 with total revenues and expenditures of \$16,883,210, a 6.28% increase over 2018. This budget represents the City's vision using indicators from the Community Survey and Comprehensive Plan Neighborhood meetings and Council directives such as funding towards debt free streets and reducing the City's operating budget reliance on Local Government Aid. The Primary revenue

source for financing the General Fund budget (56%) comes from property taxes.

City spending for all purposes includes operations such as administration, police, fire, public works, community development, parks and recreation as well as debt payments and capital replacement. The chart to the right shows the budgeted expenditures by department.

Expenditures

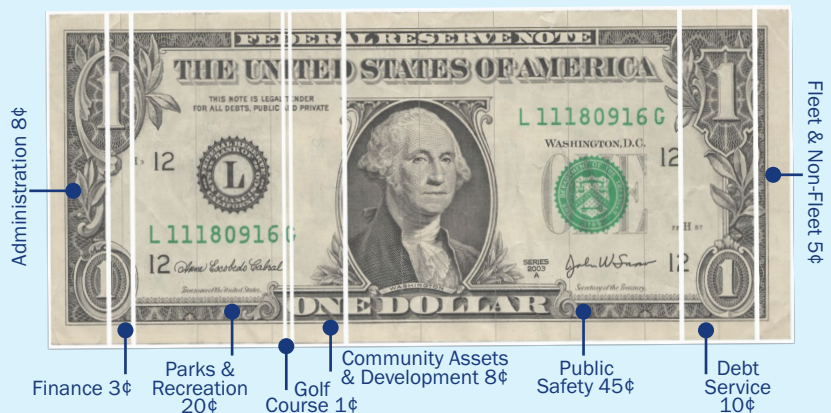


2019 City Tax Levy

The City Council adopted a 2019 City tax levy of \$9,513,110. This represents an additional investment of \$851,940 from payable 2018. The median valued home in New Brighton increased 9% from last year's median value to \$264,500 and will pay an estimated \$929 in city property taxes in 2019. The monthly cost of \$77 for the median valued home for city services continues to be good value as compared to other common household monthly costs.



How is My Property Tax Dollar Spent?



2019 Utility Rates

To maintain and improve utility services delivered to New Brighton residents, the City Council has adjusted the rates for water, sewer, storm-water, and street light services.

In an effort to fairly price out services, Council adopted mixed rate plans for both water and sewer consumption. This places a larger emphasis on the City's commercial properties whose higher consumption levels require larger distribution infrastructure. This permits residential properties to experience only a moderate increase to their rates.

Also new for the 2019 utility rates is the reclassification of townhomes to the single and two-family rate structure. The rates are designed to address the following Capital Replacements/Improvements:

- ✓ Replacing roughly 21 miles of street utility infrastructure over the next 10 years
- ✓ Storm sewer improvements to mitigate flooding
- ✓ Re-lamping the City's street lights with LED lighting
- ✓ Replacing and upgrading citywide water meters
- ✓ Repainting of water towers
- ✓ Lift station improvements
- ✓ Citywide sewer lining

DO YOU QUALIFY FOR FINANCIAL RELIEF?

The City of New Brighton provides limited financial relief to low-income single family homeowners. You have to be enrolled in the SNAP, MFIP, or GA Ramsey County financial assistance programs, be at or below 165% of the federal poverty threshold guidelines,

and provide annual written proof of participation. This financial assistance equals 50% of the quarterly flat rate amounts of the water and sewer charges. Please mail in, or drop off at City Hall, your proof of participation in the County financial assistance program.

WATER

Single, Two-Family, Townhome Residential	\$3.28 per 1,000 gallons
All Other	\$4.23 per 1,000 gallons

SEWER

Single, Two-Family, Townhome Residential	\$5.03 per 1,000 gallons
All Other	\$6.78 per 1,000 gallons

STORM WATER PER QUARTER

Single, Two-Family, Townhome Residential	\$16.26
Park, Cemetery, Golf Course	\$4.46 per acre
School	\$48.54 per acre
Mobile Home Park	\$66.01 per acre
Church	\$90.44 per acre
Apartment, Condominium, Senior Housing, & Nursing Home	\$107.76 per acre
Commercial, Industrial, & Warehouse	\$201.97 per acre
Unimproved, Vacant Land	\$0

STREET LIGHTS PER QUARTER

Single, Two-Family, Townhome Residential	\$10.36
All Other	\$31.07

The average water & sewer consumption in New Brighton is 15,000 gallons of water and 13,000 gallons of sewer per property. Average quarterly utility cost is \$141.21 per property.





Closest Unit Dispatching



Brian Weierke, Director of Public Safety, Fridley, and Tony Paetznick, Director of Public Safety, New Brighton.

When a confirmed structure fire occurs within the City of New Brighton, the first fire engine arriving at the emergency scene might not have the NBFD logo. Rather, the firefighting crew might be from one of New Brighton's many neighboring fire departments.

Thanks to a unique, local partnership involving all ten fire departments from Ramsey County, the Closest Unit Dispatching (CUD) agreement sends the nearest fire apparatus to such fires regardless of jurisdictional boundaries.



"If there's a fire, people don't care what

“**W**hen someone’s house or business is on fire, they don’t care what the name is on the side of the fire truck. They just want firefighters there fast,” says New Brighton Public Safety Deputy Director Dan Olson who has served as the City’s Fire Chief since 1999. With that sentiment in mind on how best to serve the local resident or business owner, members of the Ramsey County Fire Chiefs Association (RCFCA) agreed in early 2016 to eliminating jurisdictions for certain emergency calls, including confirmed structure fires.

Breaking down municipal emergency response borders was technologically made possible through an upgrade when the Ramsey County Emergency Communications Center (ECC) replaced its decades-old Computer

Aided Dispatching (CAD) software. The ECC serves as the 911-emergency Public Safety Answering Point (PSAP) for all local law enforcement agencies and fire departments in Ramsey County, answering about one million calls annually and making it the busiest PSAP in Minnesota.

The new CAD allows for real-time identification of available fire apparatus through GPS-based automatic vehicle location (AVL) technologies. Using response algorithms, the CAD automatically determines which units are closest to the reported emergency scene and regardless of municipal borders, sends the nearest fire engine to confirmed structure fires, along with the “home” agency of the incident. New Brighton had its first experience with the CUD protocols last October

when a 911-caller reported flames coming from a neighboring house. The Lake Johanna Fire Department happened to have a fire engine on the road at the time in their response area, and based on CAD calculations, they were expected to be the closest unit to the emergency incident. In fact, the Lake Johanna engine arrived about 30 seconds before the first apparatus from New Brighton.

The firefighting crews from Lake Johanna and New Brighton worked cooperatively to quickly extinguish the fire and limit property damage to the structure. Olson described the on-scene operations of the two fire departments as “seamless” despite personnel coming from two different organizations. However, New Brighton Public Safety was not content to limit the effectiveness of the program to the county line on



In the event of a fire in a neighboring city, New Brighton firefighters can get dispatched if they're closer than other fire departments, and the other way around.

the name is on the side of the fire truck"

the edge of the community. Given that four out of six fire departments that border New Brighton are dispatched by PSAPs other than Ramsey County, New Brighton officials reached out across the Hennepin and Anoka County borders to the fire service leaders in adjacent cities to the south and west.

Deputy Director of Public Safety Trevor Hamdorf worked with the Saint Anthony and Fridley Fire Departments, and their respective dispatch centers in Hennepin and Anoka County, to add these cities to the automatic aid agreement. "We wanted all of New Brighton to benefit from closest unit dispatching, and not just the parts nearest to other Ramsey County Fire Departments. Adding Saint Anthony and Fridley firefighters to our local response plans for confirmed structure

fires in New Brighton made sense geographically," said Hamdorf, who serves as New Brighton's representative to the RCFCFA. This puts a fire station within 1.5 miles of nearly every residence in New Brighton, an important metric for determining the City's ISO (Insurance Services Office, Inc.) rating that the influences hazard insurance premiums for residential and commercial property owners.

City of Fridley Public Safety Director Brian Weierke eagerly embraced the idea of sharing firefighting resources, including personnel and apparatus, when responding to confirmed structure fires. With the location of their neighborhood fire station on Central Avenue, Fridley firefighters are well-positioned to serve the northwestern part of New Brighton. Meanwhile, New Brighton

will automatically respond to such incidents in the eastern half of Fridley. Weierke states, "This is truly a mutually-beneficial relationship. It is a win-win for both communities and we are glad to partner with New Brighton on this effort to better serve residents in both cities."

In December, the Ramsey County Fire Chiefs Association Closest Unit Dispatching was awarded the Leading Innovators of the 2018 City Category by the Humphrey School of Public Affairs at the University of Minnesota when it recognized 19 such projects as recipients of its 12th annual Local Government Innovation Awards (LGIA). New Brighton Public Safety representatives attended the award banquet to receive this recognition with their fire service leadership peers from throughout Ramsey County.

SNOW PLOWING

The City commences snow and ice control operations when any of the following conditions are met:

- Snow accumulation of 2" and if it is still snowing or more snow is being forecasted
- Drifting snow is causing hazardous travel conditions
- Icy conditions are adversely affecting travel
- Time of snowfall is affecting peak travel times

STREET LIGHTS

Street lights that are burned out or malfunctioning can be reported directly to Xcel at 1-800-960-6235 or on the residential section of the Xcel website at www.excelenergy.com. Please have specific information ready; including, an address/house#/directional corner or side of the street.

MAIL BOXES

You are responsible for clearing the snow away so that the mail carrier can deliver your mail. If a mailbox is damaged due to indirect contact with a snow plow, the City will assume no responsibility. If a mailbox is hit by a City snow plow, the City will make temporary repairs to avoid interruption in mail service. Permanent repairs will be made in the spring. The City will replace mailboxes as prescribed by the U.S. Post Office. Report mail box damage at 651-638-2111 or kim.otis@newbrightonmn.gov.



WINTER TIME IN

WINTER EXCAVATION

Any sites that are marked with a flasher and needs permanent road repair will be worked on in the spring, after road restrictions are removed. This work will generally be completed by June 1st.

ORGANICS RECYCLING

Do your part to help the environment; get started by collecting organics recycling in three easy steps: visit a Ramsey County yard waste site to pick up a free starter kit (while supplies last), fill up your compostable bags with organics recycling, bring it back to a drop-off site for free disposal. Visit RamseyRecycles.com/OR for more information.



SIDEWALKS AND TRAILS

Sidewalks and trails are cleared thoroughly, but not necessarily to bare pavement. The City does NOT use de-icing chemicals for ice control on sidewalks or trails. Plowing of the skeletal sidewalk system begins at the same time the plowing of the City streets begins. The intent is to get the sidewalks in school areas cleared before the opening of school, but not before the adjacent streets are cleared. City park paths and walkways are to be plowed after sidewalks are cleared.

PARKING ON CITY STREETS

City code restricts daytime on-street parking to six hours between 5:00am and 2:00am, and night time parking to thirty minutes between 2:00am and 5:00am. Vehicles are not to be on any street after a snowfall of at least three inches. Vehicles that are parked in violation will be plowed in. Vehicles that are not removed within a reasonable period of time will be towed at the owner's expense.

FIREWOOD

All outside storage of cut firewood needs to be neatly and safely stacked either in the side or rear yard.



GARBAGE AND RECYCLING

The City is asking for a cooperative effort from its residents on garbage day. Place garbage and recycling containers in the driveway at least 2-4 feet back from the curb. The City has confirmed the arms of the garbage trucks can extend over 4 feet from the curb line. This will help in our plowing efforts to clear the streets curb-to-curb.



HELP CLEAR FIRE HYDRANTS

The City encourages residents to clear the snow from any fire hydrant near your home. Snow should be clear from the hydrant to the street and three feet around the hydrant, so hoses can be connected from the fire trucks. Keeping the fire hydrants clear could mean the difference between losing an entire home and containing the fire. The City has over 850 fire hydrants and cannot clear them all after every snow event.



WINTER SAFETY TIPS

Do not pull up behind snow plows. They frequently back up and have large blind spots. Never try to pass a moving snow plow. The blowing snow around a plow may block the view of the plow blades, on-coming traffic, and/or other obstacles. Do not allow children to build snow forts at driveway corners or in the snow berms along the curb and street.

BOULEVARD DAMAGE

Snow plows may cause damage to turf in the boulevard area. Turf that has been damaged and reported will be repaired in the spring. The City shall not be responsible for damage as a result of the use of sand or de-icing chemicals or for damage to lawn sprinkler systems, fences, ornamental or decorative plantings, light posts, retaining walls, wood chips, decorative rock gardens or any other items. Report damage at 651-638-2111 or kim.otis@newbrightonmn.gov.

NEW BRIGHTON

NB Elementary School Redevelopment Plans

At some point in 2019, the citizens of New Brighton will likely see the first visible outcome of the City's new Comprehensive Plan when the former New Brighton Elementary school and surrounding lands are redeveloped into the initial components of a mixed use neighborhood. The anticipated townhomes, affordable senior units, and affordable workforce housing will immediately address a number of community goals, and Citizens have already reached out seeking to be on a waiting list for units.

At the present time, no definitive plans are in place and there is no formal application up for consideration; however, the developers did share an initial site plan with surrounding landowners in late October, and feedback from that meeting was used to guide

improvements to the conceptual development. The biggest concerns, comments, and questions from neighbors focused on the density of the plan, whether the uses were appropriate, safety concerns (both traffic & pedestrian), the location of public open space, access to the site, and the relation of tall townhomes to nearby single family homes. City representatives heard these concerns and directed the developers to revisit their concept following the meeting. Simultaneously, the City worked to acquire additional property in the area to contribute to desired solutions. The end result of these efforts is a new plan for development anticipated to come forward sometime in early 2019.

With regards to overall density and land use, these items did not change as both will be compliant with the new City's comprehensive plan that

was recently approved following a nearly two-year effort. "Housing" was ranked in 2017 as the second most critical issue to residents (second only to safe drinking water), and feedback gathered during two community workshops, a series of on-line surveys, various pop-up events throughout the City, and multiple Commission and Council meetings identified this land as an ideal location for what is proposed.

In January, the City will hold a public hearing to rezone this land to R-3B in compliance with the new comprehensive plan which will allow the development proposal to come forward as a Planned Residential Development (PRD). Please contact Ben Gozola at ben.gozola@newbrightonmn.gov or 651-638-2059 if you have any questions or would like to be included on email updates.



Important site characteristics that will benefit the community include:

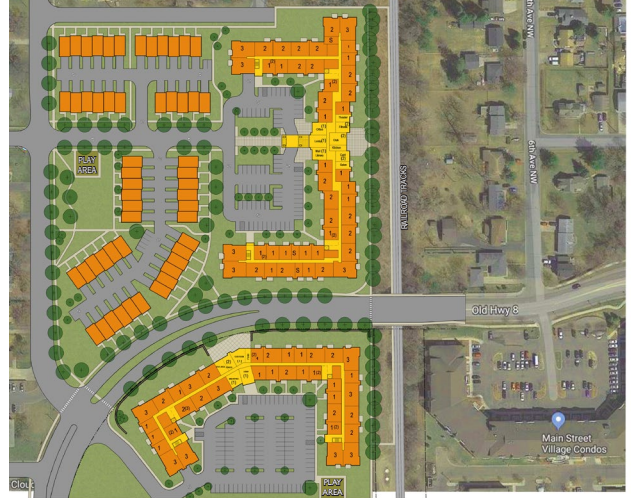
A Four-Way Intersection at Old Highway 8

Soon to be acquired land south of Old Highway 8 will allow 8th Avenue NW to continue south of the highway to the east of existing businesses. This will allow the intersection to be redesigned for possible inclusion of a stoplight or large roundabout which in turn will regulate northbound traffic and make access to 8th Avenue NW easier following development. Importantly, this change will also allow for safer ingress & egress to & from businesses along Old Highway 8, and for a more efficient use of land in the southern portion of this development. Staff and the City Council had contemplated buying additional land to accommodate improvements to address traffic and pedestrian concerns, and public input helped solidify this course of action.



Park Location and Townhome Locations Updated

The City requested the developers shift all parkland to be along 8th Avenue, and orient the new townhomes towards Old Highway 8 and the proposed senior housing. This change coupled with potential berming and plantings should significantly improve the transition between this development and directly fronting homes to the west.



Pedestrian Safety and Traffic

Along with the traffic control at 8th Avenue and Old Highway 8, additional improvements along 8th Avenue can also be incorporated to improve pedestrian safety and slow down traffic. Options may include curb bump outs at intersections to slow traffic and reduce crossing distances, raised intersections which force vehicles to slow down upon approach, or possibly mini roundabouts at intersections to both slow traffic and minimize crossing distances.

HELP WANTED!



The Parks and Recreation Department has employment opportunities year round! We are currently hiring for staff at the Community Center, and in our Aquatics division! These jobs are great for those just turning 16, and looking for a way to earn extra money while in school, and to build your resume! We will also begin hiring

for seasonal summer positions in February! Positions will be posted on the City's website, with applications being accepted until all positions are filled. We encourage you to apply early! Positions will include:

- Playground Program staff
- Ed-Ventures staff
- Summer Park Maintenance
- Golf Course staff

- Sports Camps instructors
- Positions have a chance to experience the great parks and recreation work environment, as well as gain valuable experience! Questions? Contact the Parks and Recreation Department at 651-638-2130 or visit www.newbrightonmn.gov/departments/administration/job-openings/

Planning for an Active Future in New Brighton!



The City of New Brighton is working on creating a 20-year vision for the future of our parks and trails and is looking for valuable information from the community to help guide future planning goals. You may see us out at city locations or attending community events, so please stop by and visit with us!

Here is where we will be next:

- January 12, 2019: Health and Fitness Expo

- January 26, 2019: Community Bonfire
 - Random visits to the Eagle's Nest
- If you miss us at an event – don't worry! We also have a project website with an interactive map for leaving an idea, a comment, or what you like and don't like. And see what everyone else is saying.

Our interactive website can be found here: wsb.mysocialpinpoint.com/newbrightonparks#/

A Year with the New Eagles Nest



530,000

people visited the Community Center in the last 12 months. That beats our highest previous record by 50,000 people!

71,582

youth admissions sold



2,001

Read to Play cards redeemed



1,400

birthday party celebrations!



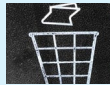
2,802

pairs of socks sold

All those people require a lot of cleaning! We have used:

10,500

trash can liners



170

miles of toilet paper



119

miles of paper towels



76

cases of hand soap



Thank you for helping us to make the new structure a success!

Parks & Recreation New Brighton

3RD ANNUAL COMMUNITY BONFIRE

New Brighton residents of all ages are invited for an evening of winter fun. Bring your skates and sleds, then warm up with your neighbors while roasting S'mores and enjoying a cup of hot cocoa around a roaring fire (supplies provided). There will be something for everyone!

Freedom Park
Saturday, January 26
6:00 - 8:00 pm



In Partnership
With:

girl scouts
river valleys





803 Old Hwy 8 NW
New Brighton, MN 55112

PRST STD
U.S. Postage
PAID
Twin Cities, MN
Permit No.
3655

*****ECRWSS**

Postal Customer
New Brighton, MN 55112

CALENDAR

January 21, Dr. Martin Luther King Jr. Day

- City Offices Closed
- License Bureau closed

January 26, Community Bonfire

- Freedom Park 6:00 pm – 8:00 pm

February 18, Presidents Day

- City Offices Closed
- License Bureau closed

February 21, Neighborhood Meeting

- Hanson Park Neighborhood Center 6:00 pm – 8:00 pm

March 21, Neighborhood Meeting

- Freedom Park 6:00 pm – 8:00 pm



Save the Dates!

2019 Clean-Up Days

May 18, 2019: 7 am – 2:30 pm

September 21, 2019: 7 am – 2:30 pm

Location: City of New Brighton Public Works Building, 700 5th Street NW

■ Bring large items including appliances, brush, building materials, carpet, electronics, furniture, lawn movers (fluid drained), mattresses, scrap metal, televisions and tires for a small fee. We also accept all household hazardous waste, as well as paper documents for shredding for free.

LIKE US ON FACEBOOK

facebook.com/cityofnewbrighton



www.newbrightonmn.gov