

MALKI

FILE NO. 16AT777

PROPERTY IN THE BOROUGH OF RIVER EDGE, BERGEN COUNTY, NEW JERSEY

Location Survey of dwelling known as Lot 32 in Block 354 as shown on a certain map entitled "Clarendon Hills, Section Five Property of CHARLES H. REIS AT BOROUGH OF RIVER EDGE - BERGEN COUNTY - N.J.", filed in the Bergen County Clerk's Office on December 12, 1940 as Map No. 3200.

Certified to: JAMES MALKI AND CHARLENE MALKI; PINNACLE MORTGAGE INC., ITS SUCCESSORS AND/OR ASSIGNS AS THEIR INTEREST MAY APPEAR; FIRST AMERICAN TITLE INSURANCE COMPANY; and JACOB J. AWAD, ATTORNEY, to be correct.

Scale: 1" = 20 feet.

Being Lot 10 in Block 814 on the Tax Map.



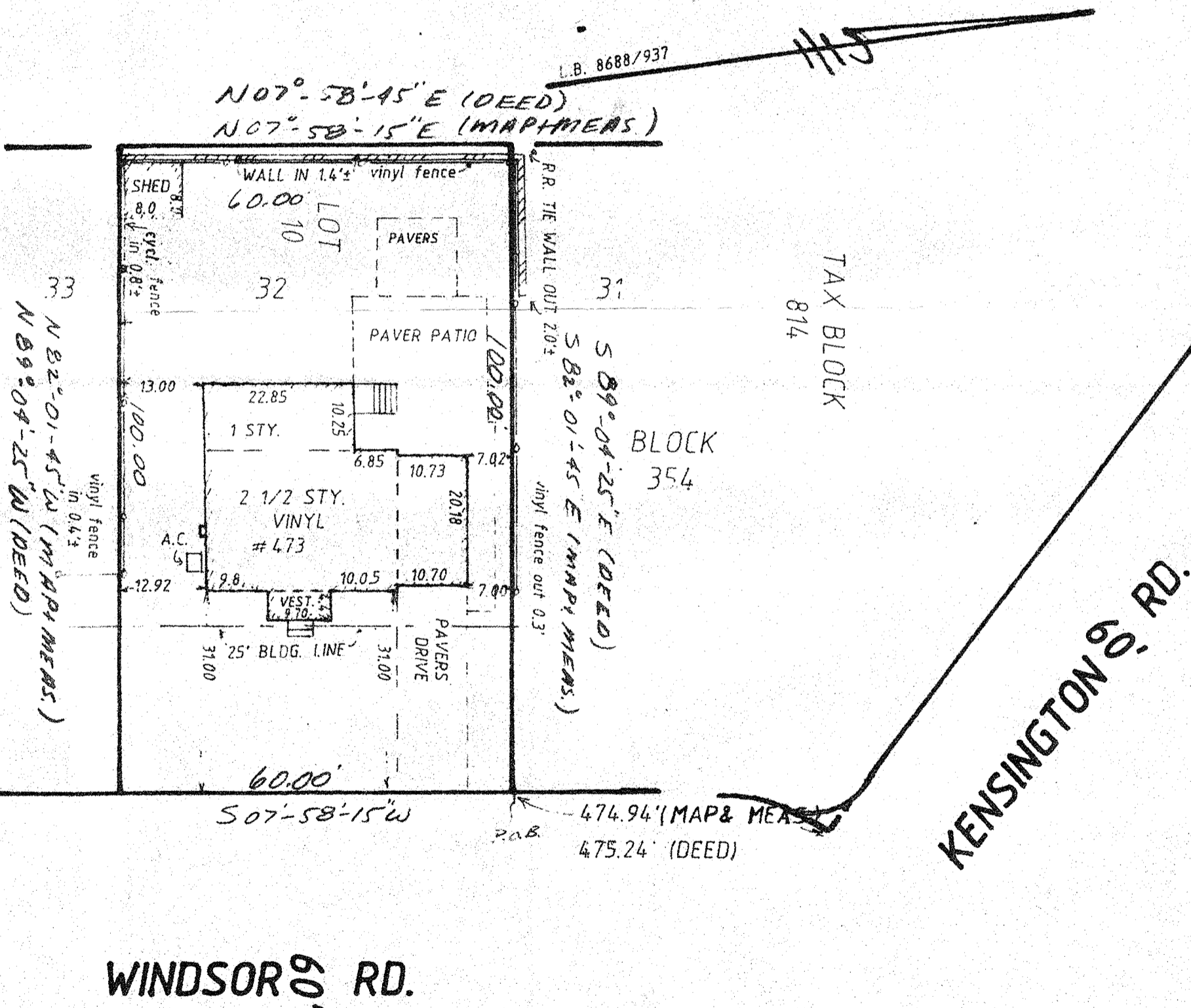
Steven L. Koestner
STEVEN L. KOESTNER

P.E. & L.S. NJ LIC. # 27901/ NY LIC. # 50865

KOESTNER ASSOCIATES
PROFESSIONAL ENGINEERS & LAND SURVEYORS
HACKENSACK, N.J. 07602

OCTOBER 24, 2016

"A written Waiver and Direction Not to set Corner Markers has been obtained from the ultimate user pursuant to P.L. 2003, c. 14 (C45:8-36.3) and N.J.A.C. 13:40-5.1 (d)."



Map # 25-F

DC:

Field Book: 4-16/69