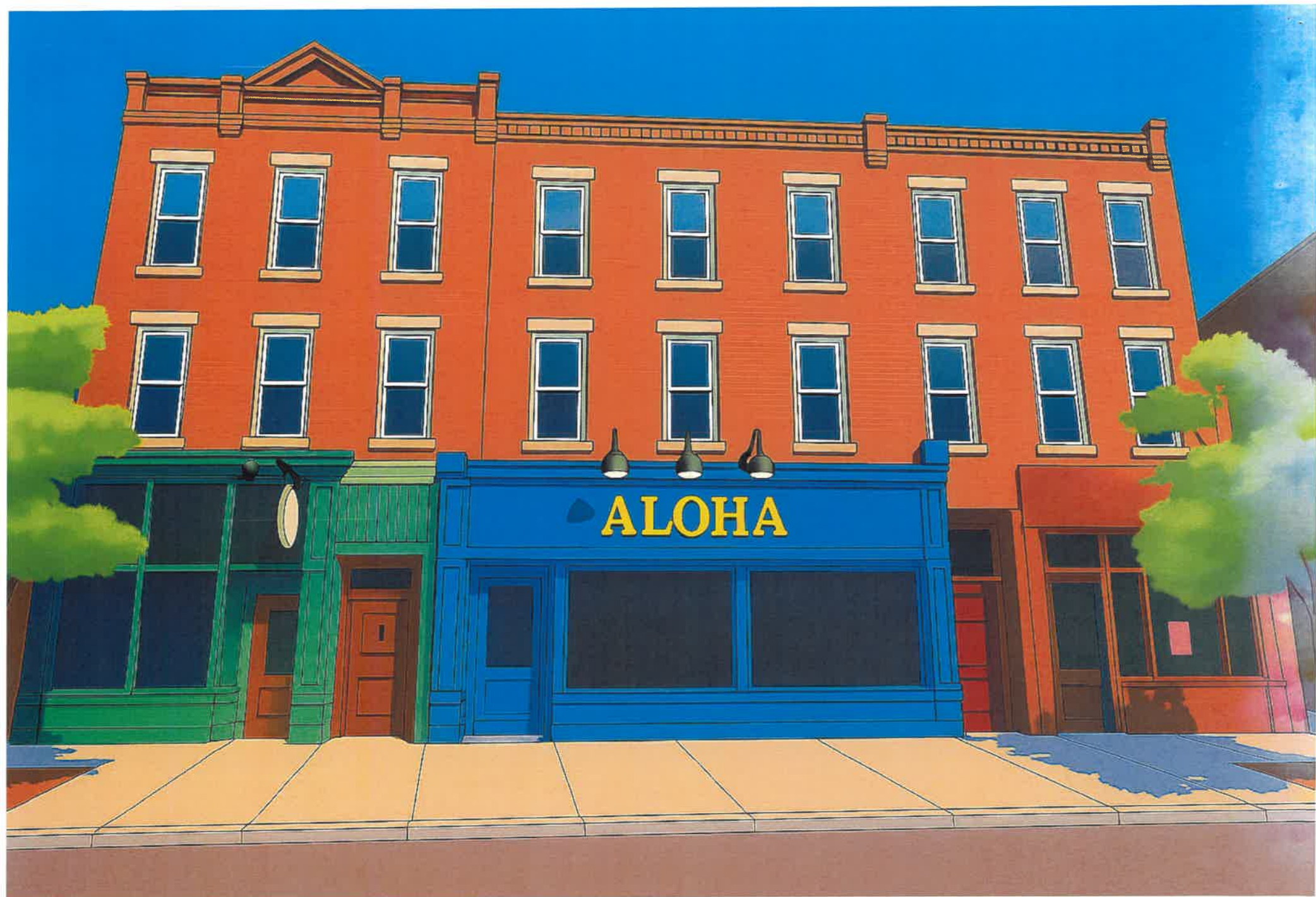


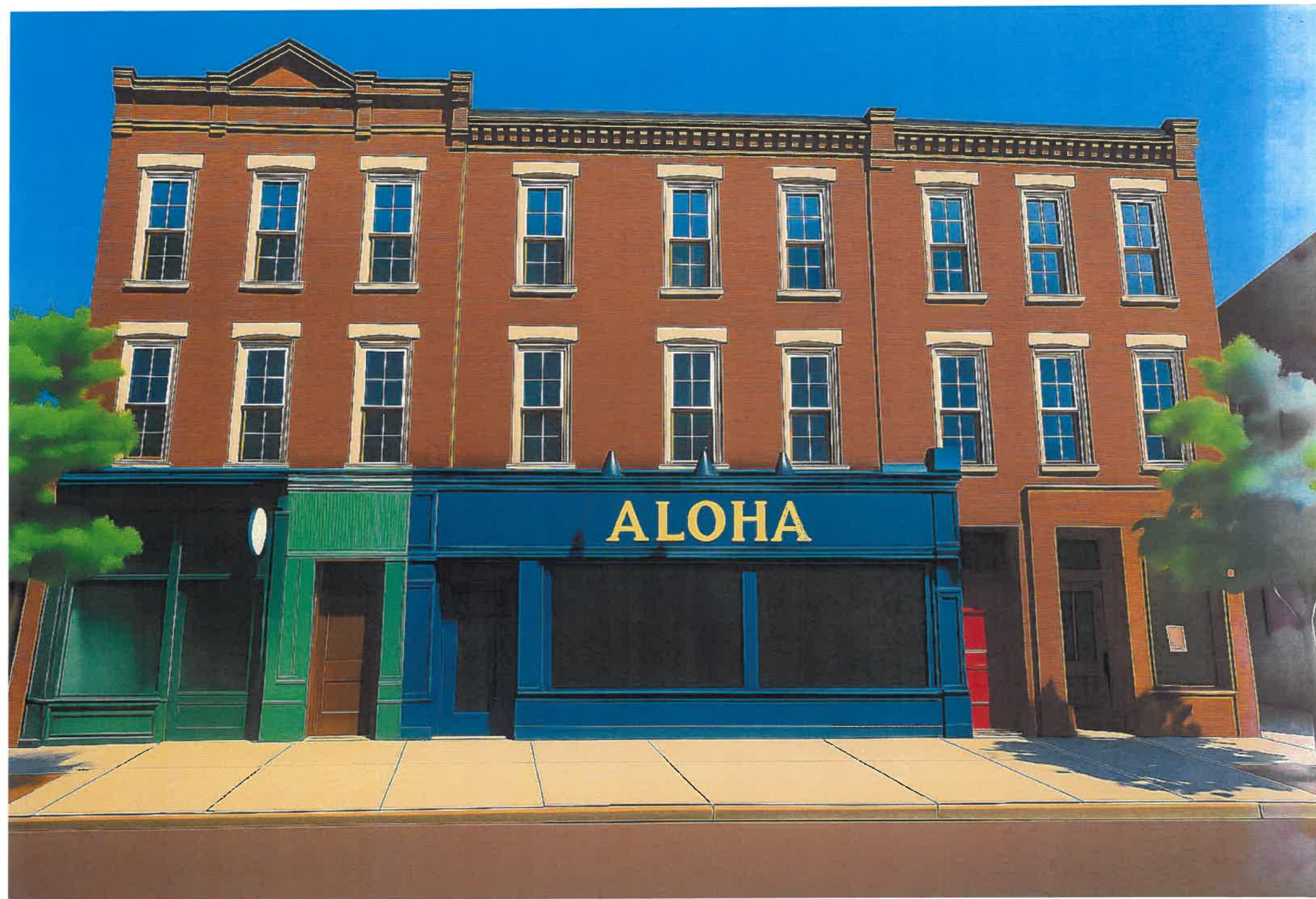


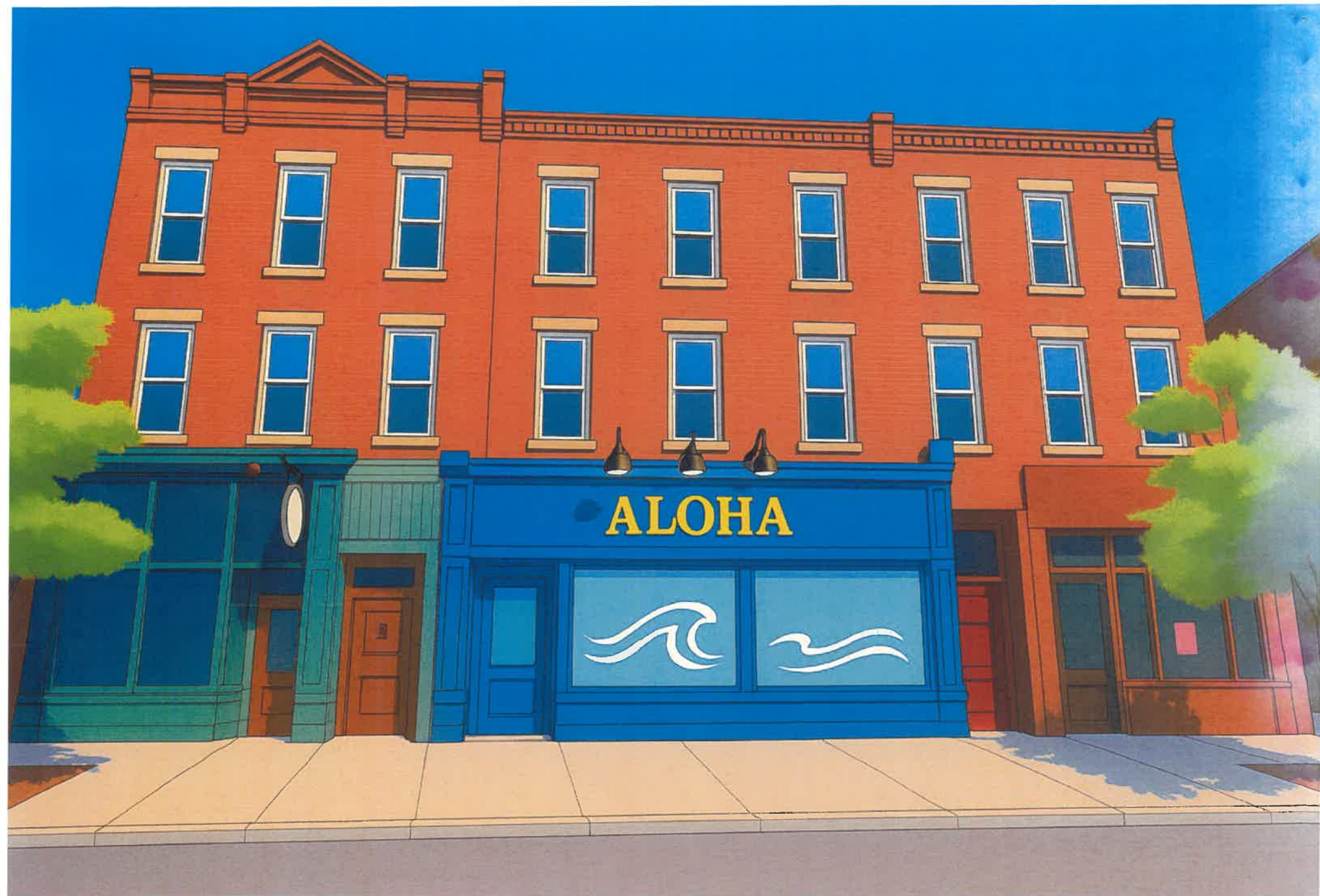
Storefront will remain the same as original with the exception of paint color, signage, and window alterations.



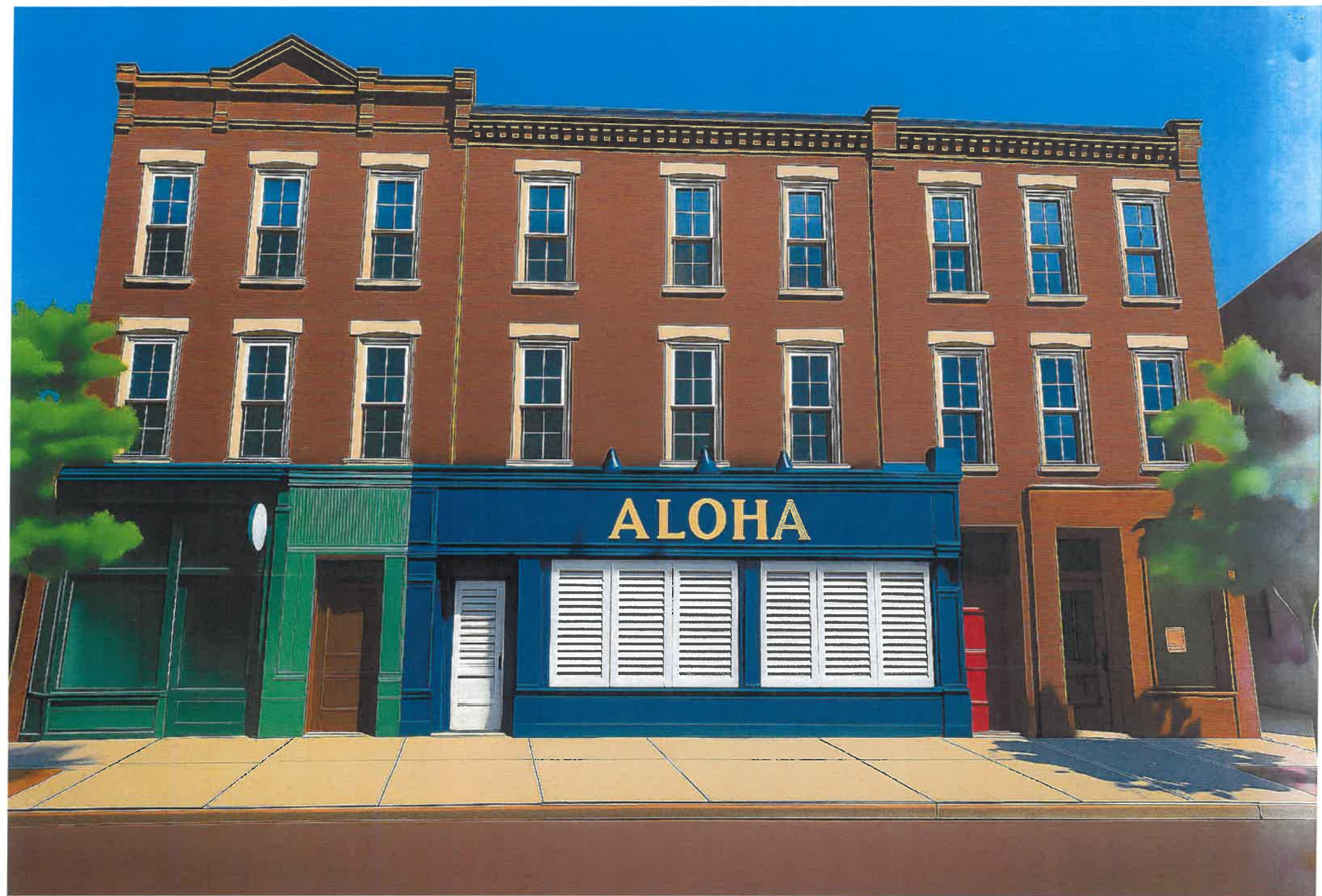


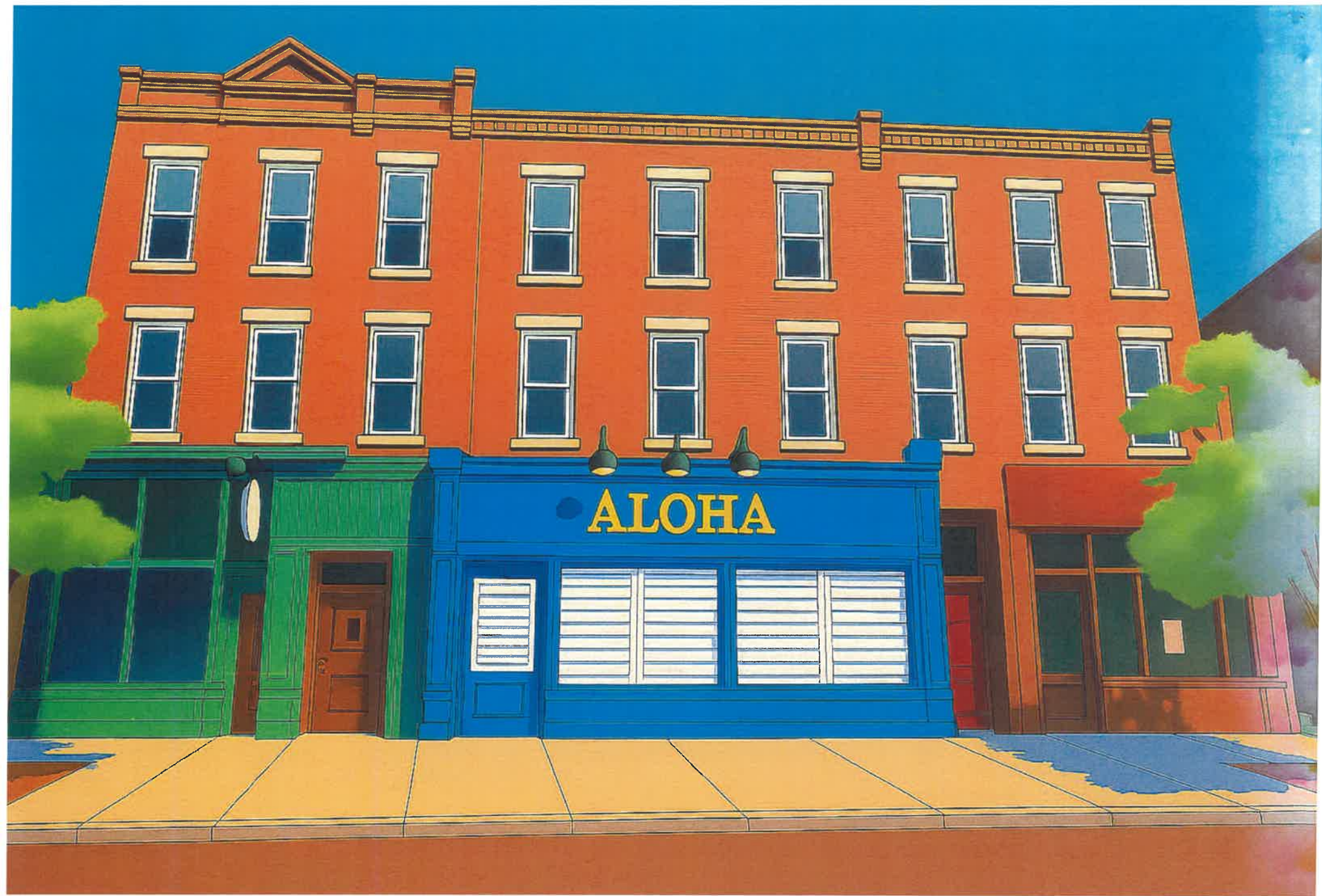


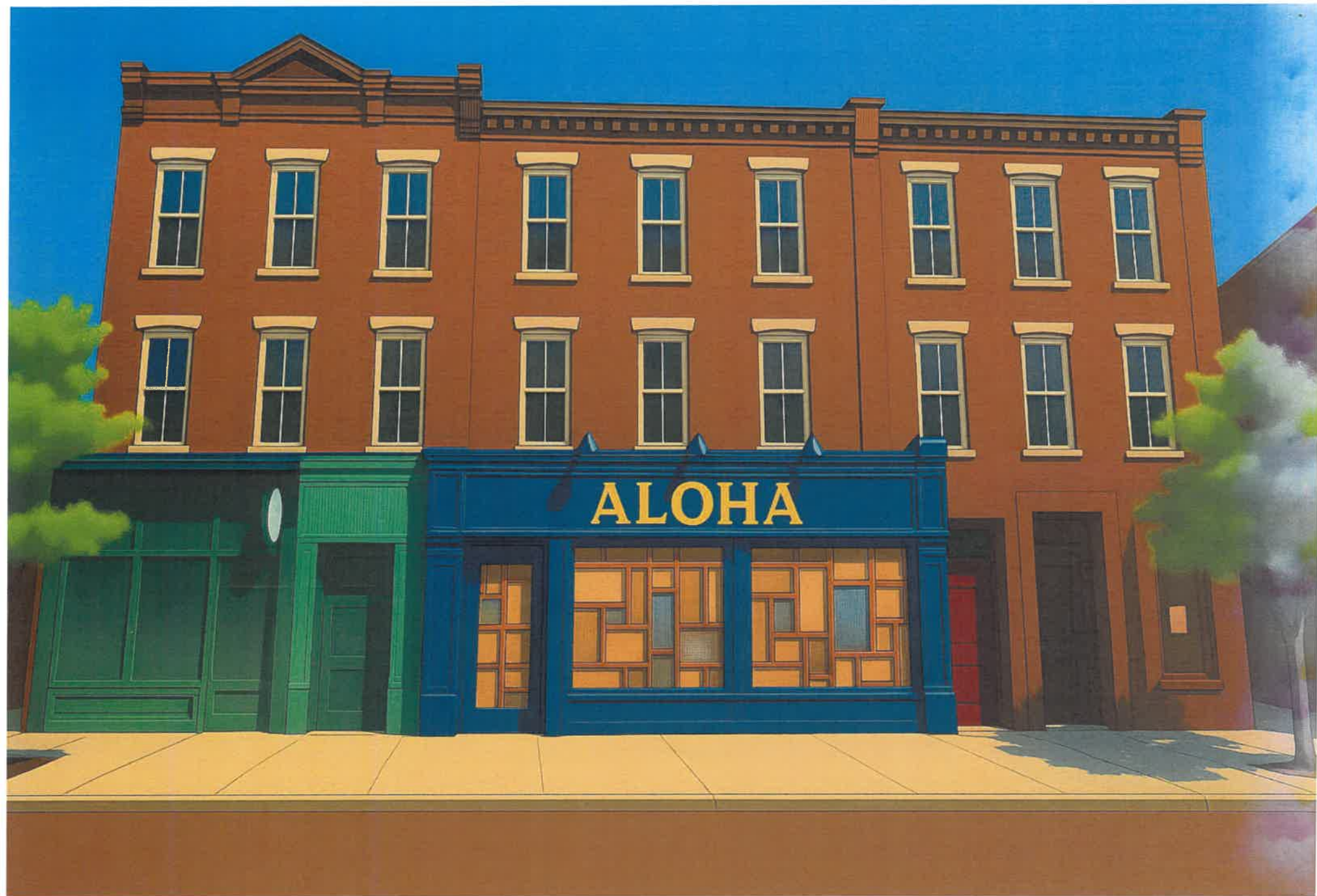


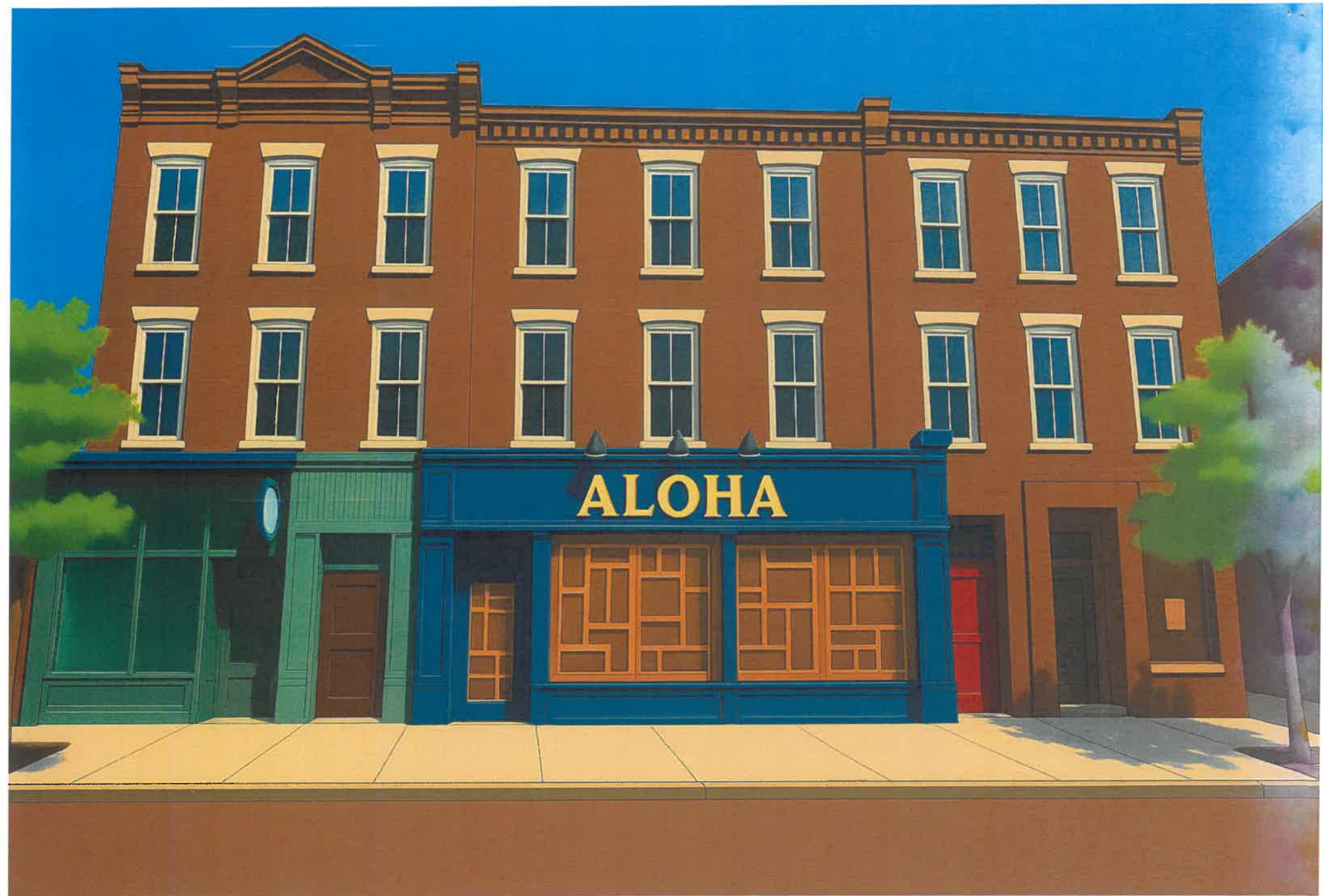












Storefront Design Proposal Packet

1. Purpose

This document outlines the proposed storefront design elements for Supreme Leafs LLC, a prospective adult-use cannabis dispensary at 10 North Broadway. The intention is to maintain a discreet, respectful, and community-conscious retail presence while ensuring full compliance with New York State and local regulations.

2. Design Objectives

- Ensure full **visual privacy** of the dispensary interior from public view
 - Preserve **natural light and architectural cohesion**
 - Maintain a design that is **humble, modern, and non-disruptive**
 - Enhance the **safety and comfort** of both customers and community members
-

3. Proposed Design Elements

A. Window Treatments

We respectfully propose the following privacy solutions for all street-facing windows and entrance points:

- **Frosted Glass**
A clean and professional finish that fully obscures visibility while allowing in light. The top of the window can be unfrosted for sunlight and an open storefront environment.





This is a different style of frosted glass that feels light, modern, and we can keep the top open to ensure more light entry.

12

- **Plain Frosted Glass with Wave Pattern to match the store theme.**

Adds a gentle, decorative element to the window treatment while maintaining full opacity.

- **Louvers (White or Wooden)**

Horizontal slatted panels mounted internally or externally for full obscurity. Their neutral tones and natural materials provide a warm, discreet look.



13

- **Interior Partition Walls**

Non-structural, freestanding interior walls placed behind the windows can block visibility from the street without altering the building facade.

- Sample A



- Sample B

14



15

4. Community Considerations

- No cannabis imagery or product displays will be visible from the exterior.
 - Signage will be discreet, following all applicable zoning codes.
 - All window treatments and materials will be selected to ensure the storefront blends with the surrounding streetscape.
 - Exterior lighting will be soft, safety-focused, and non-intrusive.
-

5. Compliance Statement

Supreme Leaf's LLC is committed to maintaining full compliance with the New York State Office of Cannabis Management (OCM), Village of Nyack zoning ordinances, and all applicable building codes. These proposed treatments reflect our sincere effort to meet privacy, aesthetic, and community standards.