

# PERIOD ARCHITECTURE

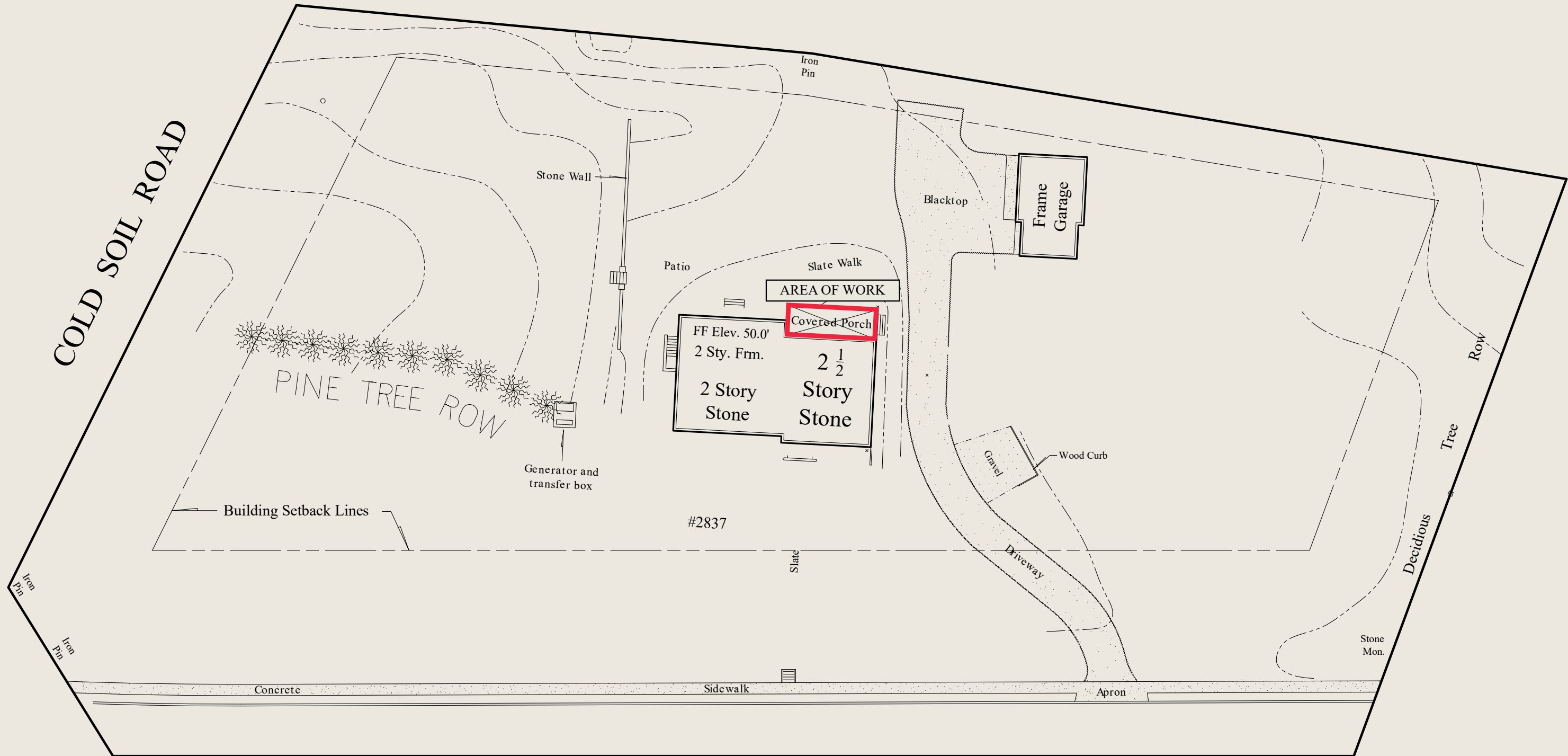
— *DESIGNING BEAUTIFUL PLACES* —

LAWRENCEVILLE HISTORIC REVIEW  
THEOPHILUS PHILLIPS II HOMESTEAD  
SEPTEMBER 8TH, 2025



HISTORIC SUBMISSION FOR WEBB RENOVATION  
2837 MAIN STREET. LAWRENCEVILLE, NJ





## MAIN STREET

A.K.A. Trenton - Princeton Road / US Highway Route 206

SITE PLAN

PERIOD ARCHITECTURE

— DESIGNING BEAUTIFUL PLACES —

[www.periodarchitectureltd.com](http://www.periodarchitectureltd.com)





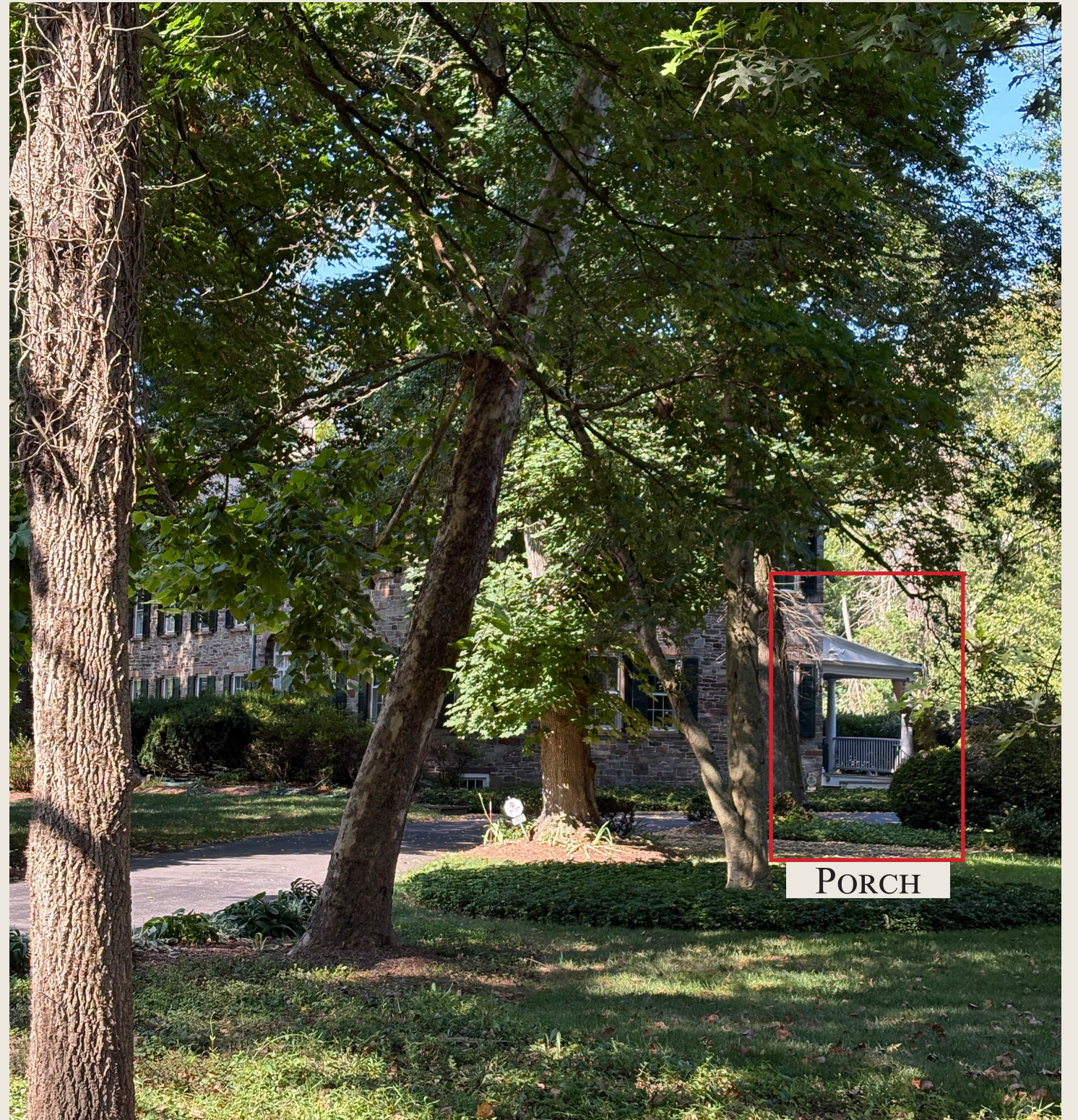
EXISTING VIEW FROM COLD SOIL ROAD

PERIOD ARCHITECTURE

— *DESIGNING BEAUTIFUL PLACES* —

[www.periodarchitectureltd.com](http://www.periodarchitectureltd.com)





EXISTING VIEW FROM MAIN STREET

PERIOD ARCHITECTURE

— *DESIGNING BEAUTIFUL PLACES* —

[www.periodarchitectureltd.com](http://www.periodarchitectureltd.com)





EXISTING VIEW OF WEST ELEVATION

PERIOD ARCHITECTURE

— *DESIGNING BEAUTIFUL PLACES* —

[www.periodarchitectureltd.com](http://www.periodarchitectureltd.com)





The existing porch is severely deteriorated and unsafe for use. The proposed work will require full demolition of the existing porch and its reconstruction to restore the porch to its original historic appearance, using appropriate materials and traditional detailing.

## EXISTING VIEWS

PERIOD ARCHITECTURE

— *DESIGNING BEAUTIFUL PLACES* —

[www.periodarchitectureltd.com](http://www.periodarchitectureltd.com)



The existing porch roof is copper, currently concealed beneath a fluid-applied waterproofing layer. The proposed work will remove the existing waterproofing and install a new copper roof and matching copper downspouts, in keeping with the historic material and appearance.

## VIEW OF EXISTING ROOF

PERIOD ARCHITECTURE

— DESIGNING BEAUTIFUL PLACES —

[www.periodarchitectureltd.com](http://www.periodarchitectureltd.com)





The existing porch has sustained extensive water damage, resulting in mold growth and wood rot. The porch will be fully demolished due to its unsafe and deteriorated condition. A new porch will be reconstructed to match the home's original historic appearance, using historically compatible materials and period-appropriate craftsmanship.

EXISTING VIEWS

PERIOD ARCHITECTURE

— DESIGNING BEAUTIFUL PLACES —

[www.periodarchitectureltd.com](http://www.periodarchitectureltd.com)

*PHOTOS OF DAMAGED PORCH*



As part of the porch reconstruction, all columns will be replaced to reflect the original historic design. The new columns will be carefully crafted to replicate the proportions and detailing of the originals, with the moulding profiles recreated based on field measurements and existing photographs to ensure accuracy and consistency with the home's historic character.



EXISTING VIEWS

PERIOD ARCHITECTURE

— DESIGNING BEAUTIFUL PLACES —

[www.periodarchitectureltd.com](http://www.periodarchitectureltd.com)

*PHOTOS OF DAMAGED PORCH*





The existing porch decking is in poor condition, with chipped paint, areas of rot, and gaps that have allowed weeds to grow through. The underlying framing is also deteriorated, compromising the porch's stability and safety. Replacing both the decking and framing with historically appropriate materials will restore the porch's structural integrity, protect it from future damage, and preserve its historic character.





EXISTING NORTH ELEVATION

PERIOD ARCHITECTURE

— DESIGNING BEAUTIFUL PLACES —

[www.periodarchitectureltd.com](http://www.periodarchitectureltd.com)





EXISTING WEST ELEVATION





EXISTING SOUTH ELEVATION

PERIOD ARCHITECTURE

— DESIGNING BEAUTIFUL PLACES —

[www.periodarchitectureltd.com](http://www.periodarchitectureltd.com)





PROPOSED NORTH ELEVATION

PERIOD ARCHITECTURE

— DESIGNING BEAUTIFUL PLACES —

[www.periodarchitectureltd.com](http://www.periodarchitectureltd.com)





PROPOSED WEST ELEVATION





PROPOSED SOUTH ELEVATION

PERIOD ARCHITECTURE

— DESIGNING BEAUTIFUL PLACES —

[www.periodarchitectureltd.com](http://www.periodarchitectureltd.com)



STANDING SEAM COPPER ROOF

CORNICE IN POLYASH, PTD.

'MARVIN ULTIMATE' CLAD  
WINDOW IN STONE WHITE

POLYASH FACADE, PTD.  
TO MATCH EXISTING WHITE

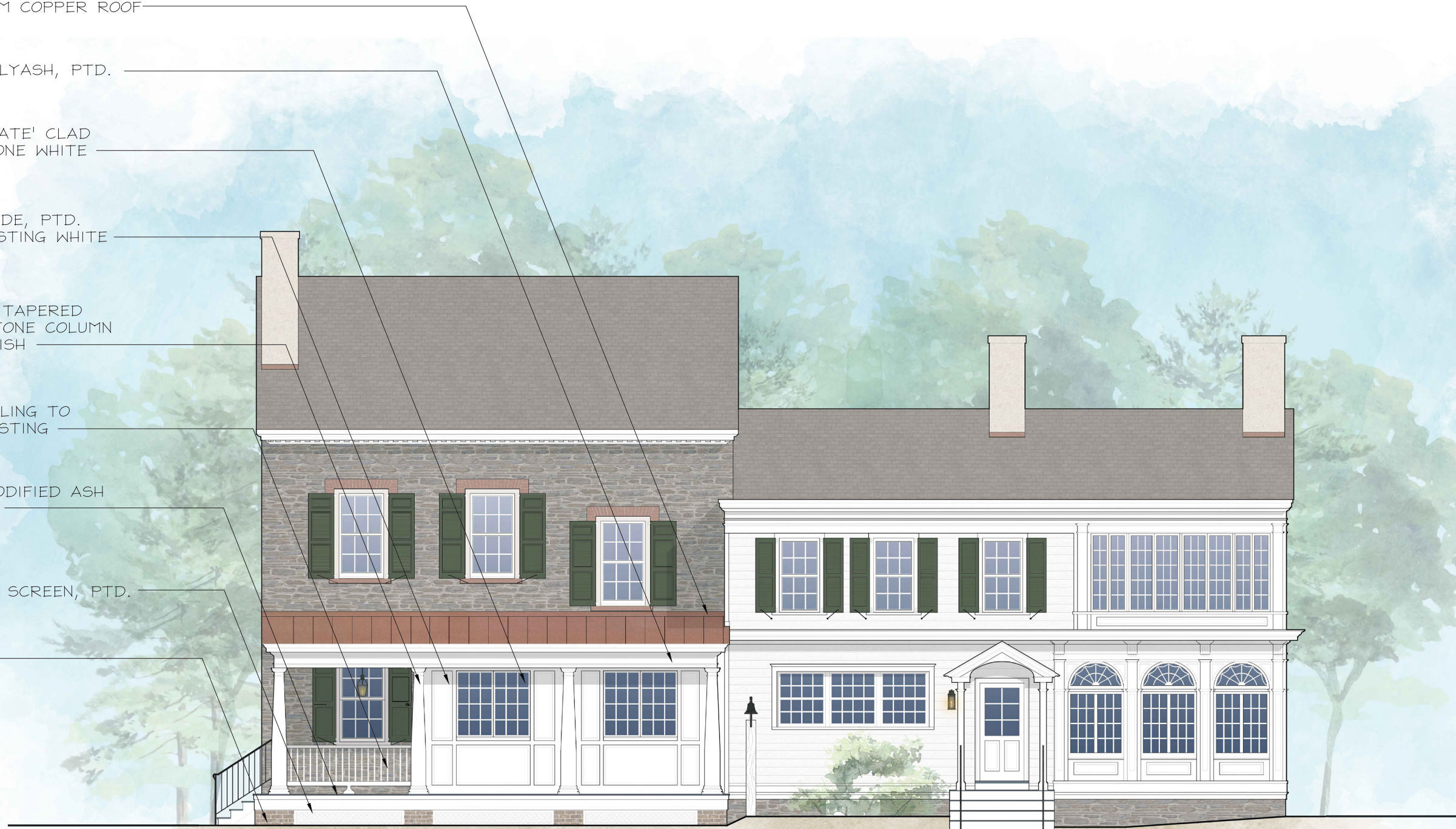
'CHADSWORTH' TAPERED  
ROUND POLYSTONE COLUMN  
IN SMOOTH FINISH

NEW WOOD RAILING TO  
REPLICATE EXISTING

THERMALLY MODIFIED ASH  
WOOD DECKING

WOOD LATTICE SCREEN, PTD.

BRICK PIERS



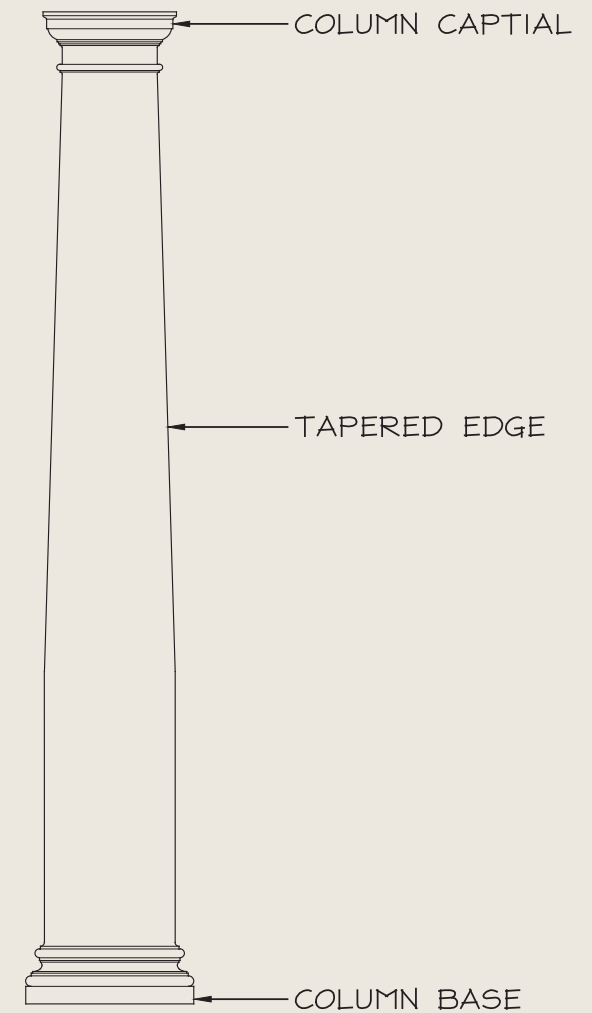
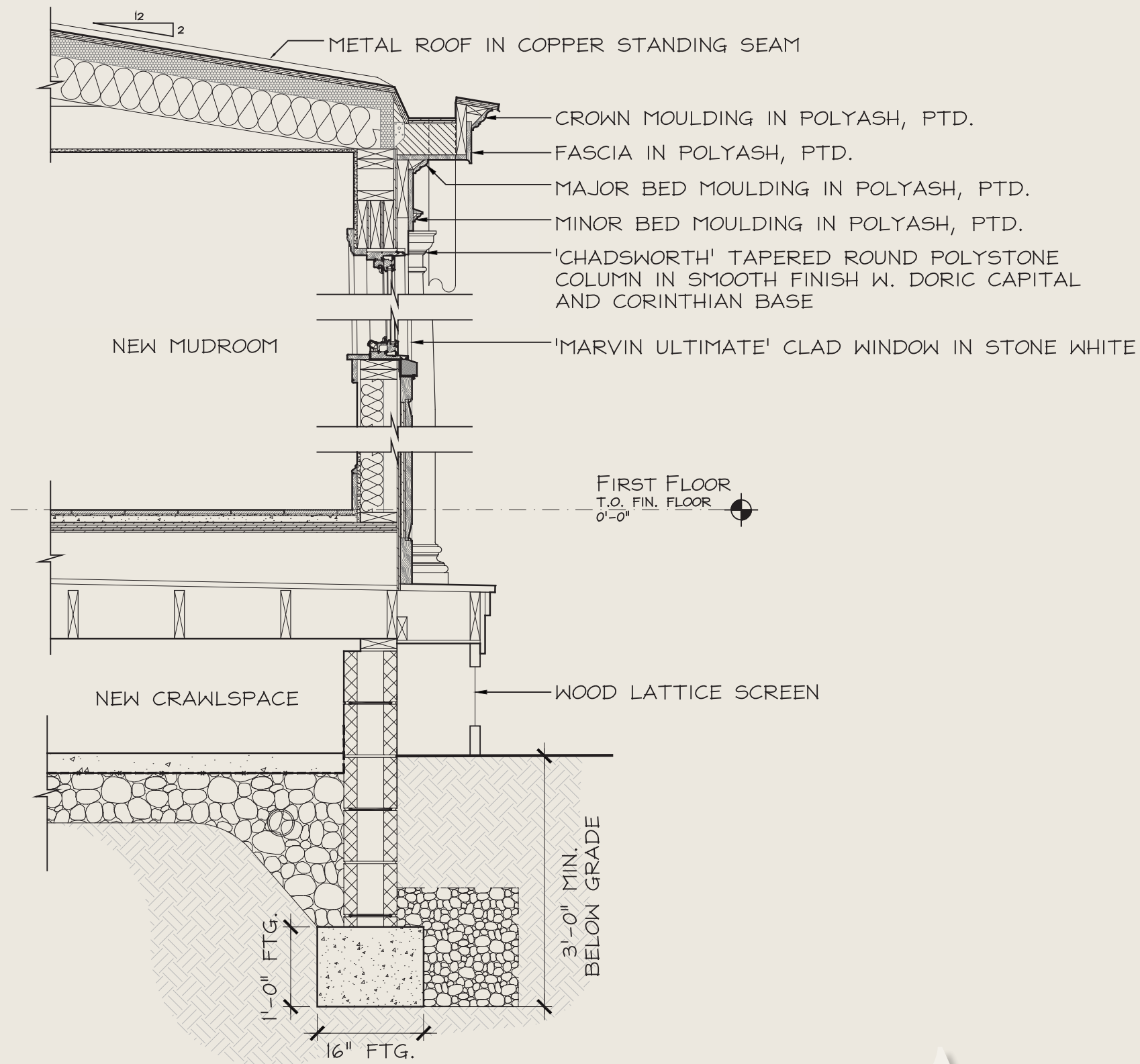
RENDERED ELEVATION

PERIOD ARCHITECTURE

— DESIGNING BEAUTIFUL PLACES —

[www.periodarchitectureltd.com](http://www.periodarchitectureltd.com)





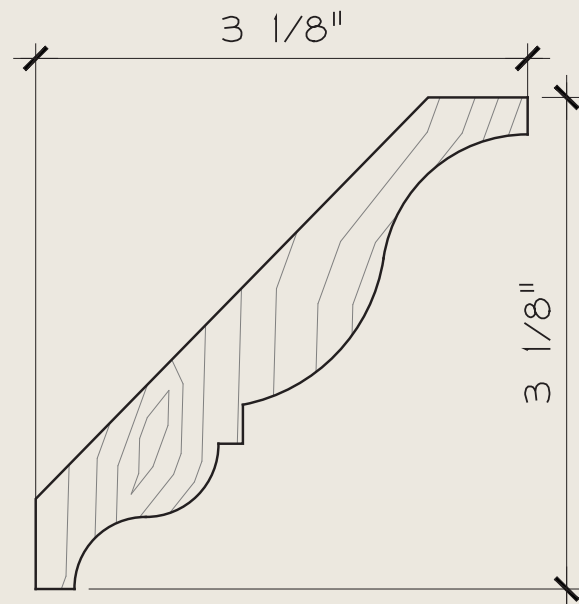
## WALL SECTION DETAIL

PERIOD ARCHITECTURE

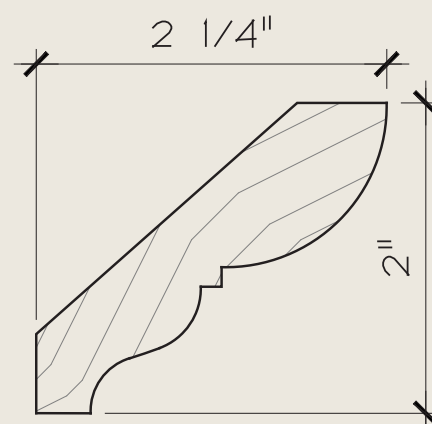
— DESIGNING BEAUTIFUL PLACES —

[www.periodarchitectureltd.com](http://www.periodarchitectureltd.com)

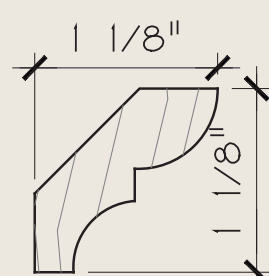




CROWN MOULDING



MAJOR BED MOULDING



MINOR BED MOULDING



## MOULDING PROFILES

PERIOD ARCHITECTURE

— DESIGNING BEAUTIFUL PLACES —

[www.periodarchitectureltd.com](http://www.periodarchitectureltd.com)





EXISTING VIEW

PERIOD ARCHITECTURE

— DESIGNING BEAUTIFUL PLACES —

[www.periodarchitectureltd.com](http://www.periodarchitectureltd.com)





PROPOSED RENDERING

PERIOD ARCHITECTURE

— *DESIGNING BEAUTIFUL PLACES* —

[www.periodarchitectureltd.com](http://www.periodarchitectureltd.com)





EXISTING VIEW

PERIOD ARCHITECTURE  
— *DESIGNING BEAUTIFUL PLACES* —  
[www.periodarchitectureltd.com](http://www.periodarchitectureltd.com)





PROPOSED RENDERING

PERIOD ARCHITECTURE

— DESIGNING BEAUTIFUL PLACES —

[www.periodarchitectureltd.com](http://www.periodarchitectureltd.com)





PROPOSED RENDERING

PERIOD ARCHITECTURE  
— *DESIGNING BEAUTIFUL PLACES* —  
[www.periodarchitectureltd.com](http://www.periodarchitectureltd.com)





EXISTING VIEW

PERIOD ARCHITECTURE

— DESIGNING BEAUTIFUL PLACES —

[www.periodarchitectureltd.com](http://www.periodarchitectureltd.com)





PROPOSED RENDERING

PERIOD ARCHITECTURE

— DESIGNING BEAUTIFUL PLACES —

[www.periodarchitectureltd.com](http://www.periodarchitectureltd.com)





EXISTING VIEW

PERIOD ARCHITECTURE

— *DESIGNING BEAUTIFUL PLACES* —

[www.periodarchitectureltd.com](http://www.periodarchitectureltd.com)





PROPOSED RENDERING

PERIOD ARCHITECTURE  
— *DESIGNING BEAUTIFUL PLACES* —  
[www.periodarchitectureltd.com](http://www.periodarchitectureltd.com)





— PERIOD ARCHITECTURE LTD —

53 CHURCH ROAD, MALVERN PA 19355 — 610-719-0101 — [PERIODARCHITECTURELTD.COM](http://PERIODARCHITECTURELTD.COM)

22 SOUTH MAIN STREET, SUITE 224, DOYLESTOWN PA 18901 — 215-809-1049