



# **Lawrence Township Study**

## **Possible Consolidation and/or Centralization of All Fire and Emergency Medical Service**

**Initial Presentation**  
**February 18, 2026**



# About CGR

---

- CGR is a nonprofit consulting organization that has been creating positive change in communities for over 110 years.
- We specialize in analytic and strategic services to the public and philanthropic sectors, helping organizations figure out complex issues and develop solutions.
- We have worked with dozens of fire departments and EMS agencies across the northeast to develop an understanding of their operations and develop actionable options for the future.

# Project Team

---

- Paul Bishop, Principal and Project Director
- James Harrington, Fire Service Specialist
- James Cassin, EMS Specialist
- Kieran Bezila, Senior Associate
- Alina Santiago, Research Associate
- Katherine Bell, Analytics & Information Systems Manager

# Approach

---



# Key Tasks

---

- Project Initiation
- Baseline Review
  - Interview leaders and members/staff of Fire & EMS
  - Tour facilities
  - Analyze operational and budget information
  - Analyze calls for service for the last three years
- Develop an Action Plan
  - Focused on answering key questions around capital needs, improving collaboration and preparing for the future
- Present the Report
- Goal is to complete in 180 days

# Project Timeline

Timeline	January	February	March	April	May	June
Project Kickoff	●					
Data Gathering & Site Visit	○	●				
Baseline Report Development & Presentation		○	○	●		
Options Development & Stakeholder Feedback			○	○	●	
Final Report Development				○	●	
Public Presentation						●
Project Closeout						●

○-Underway, ●- Completed



# Key Observations – Fire Service

---

- Career staff operate 8 to 4 M-F from Lawrenceville and Slackwood Stations
- Volunteer staff cover remaining hours from Lawrence Road Station
- About 1360 calls per year or 3.7 call per day
- Dedicated staff – both career and volunteer
- Limited interaction at this point between the two groups

# Key Observations - EMS

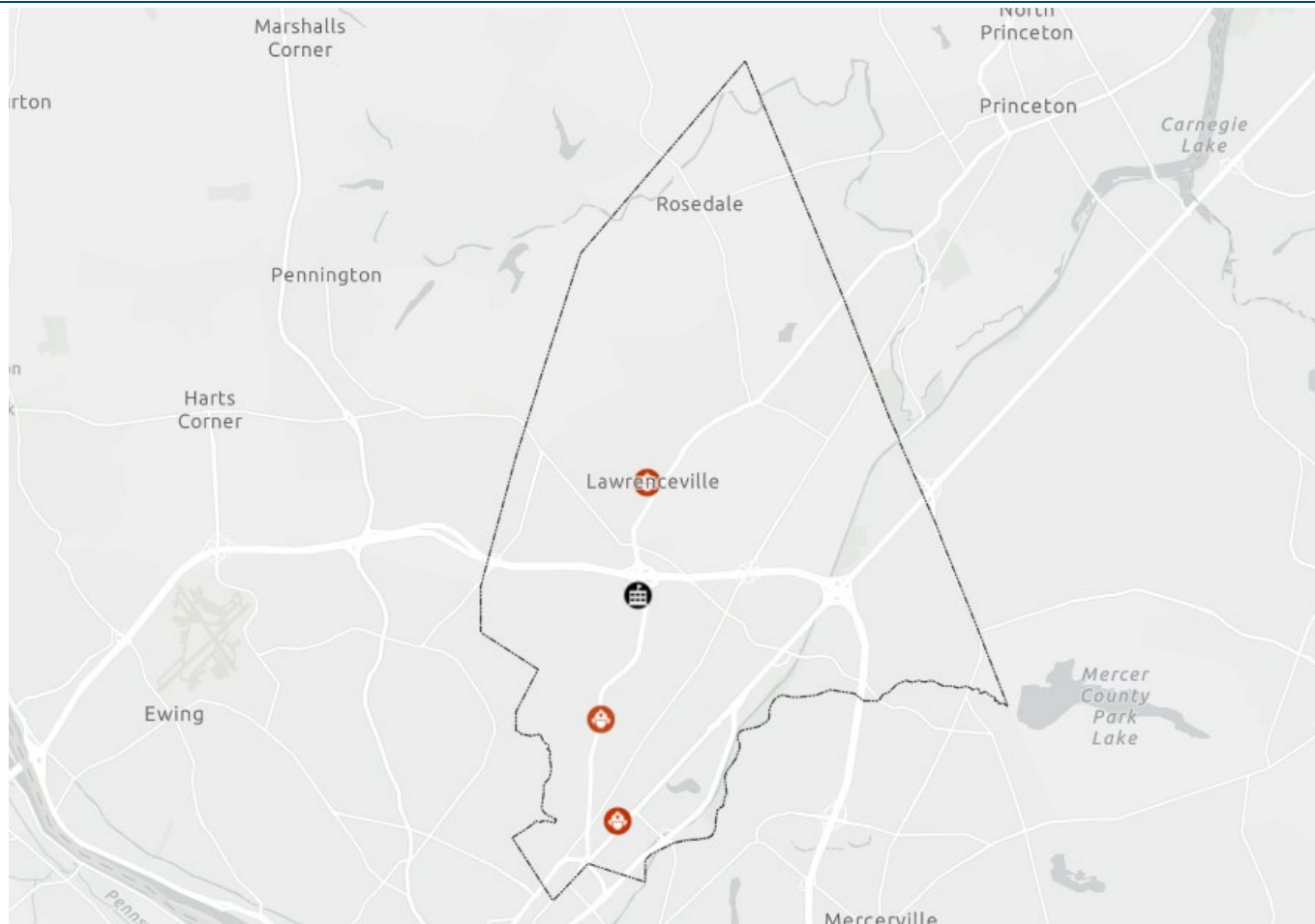
---

- Operate from own facility on Lawrence Road
- 1 or 2 EMT ambulances during daytime hours
- 1 EMT ambulance overnight
- Very experienced EMTs
- Call volume has gone up each of last three years
- Respond to 11.8 calls per day on average

# EMS Call Volume

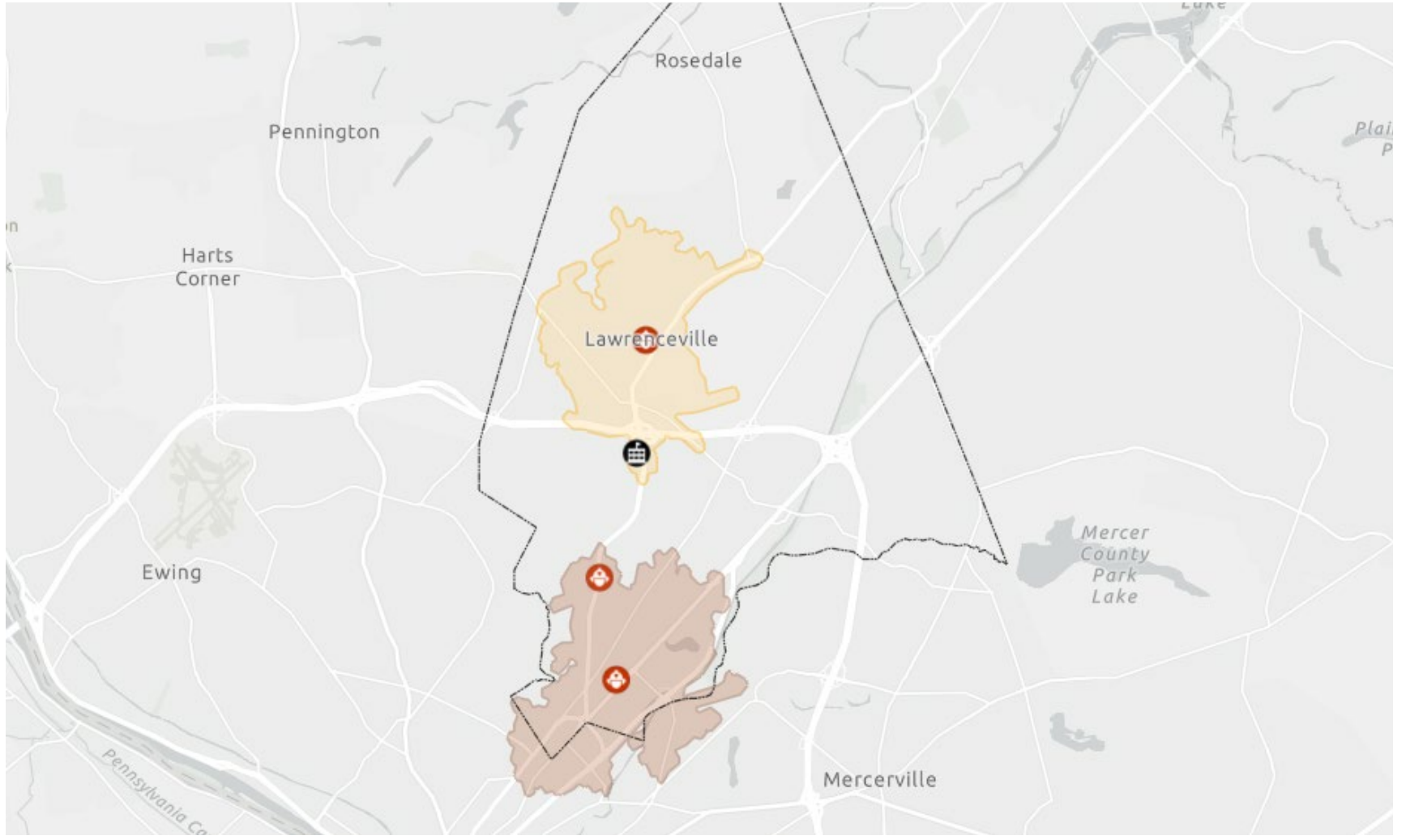
Month	2023	2024	2025
Jan	307	388	391
Feb	276	311	327
Mar	285	310	366
Apr	275	326	340
May	340	316	335
Jun	306	334	336
Jul	374	342	413
Aug	353	330	359
Sep	333	314	344
Oct	375	360	361
Nov	317	350	339
Dec	384	353	383
<b>Grand Total</b>	<b>3925</b>	<b>4034</b>	<b>4294</b>

# Locations of Fire Stations and Municipal Center



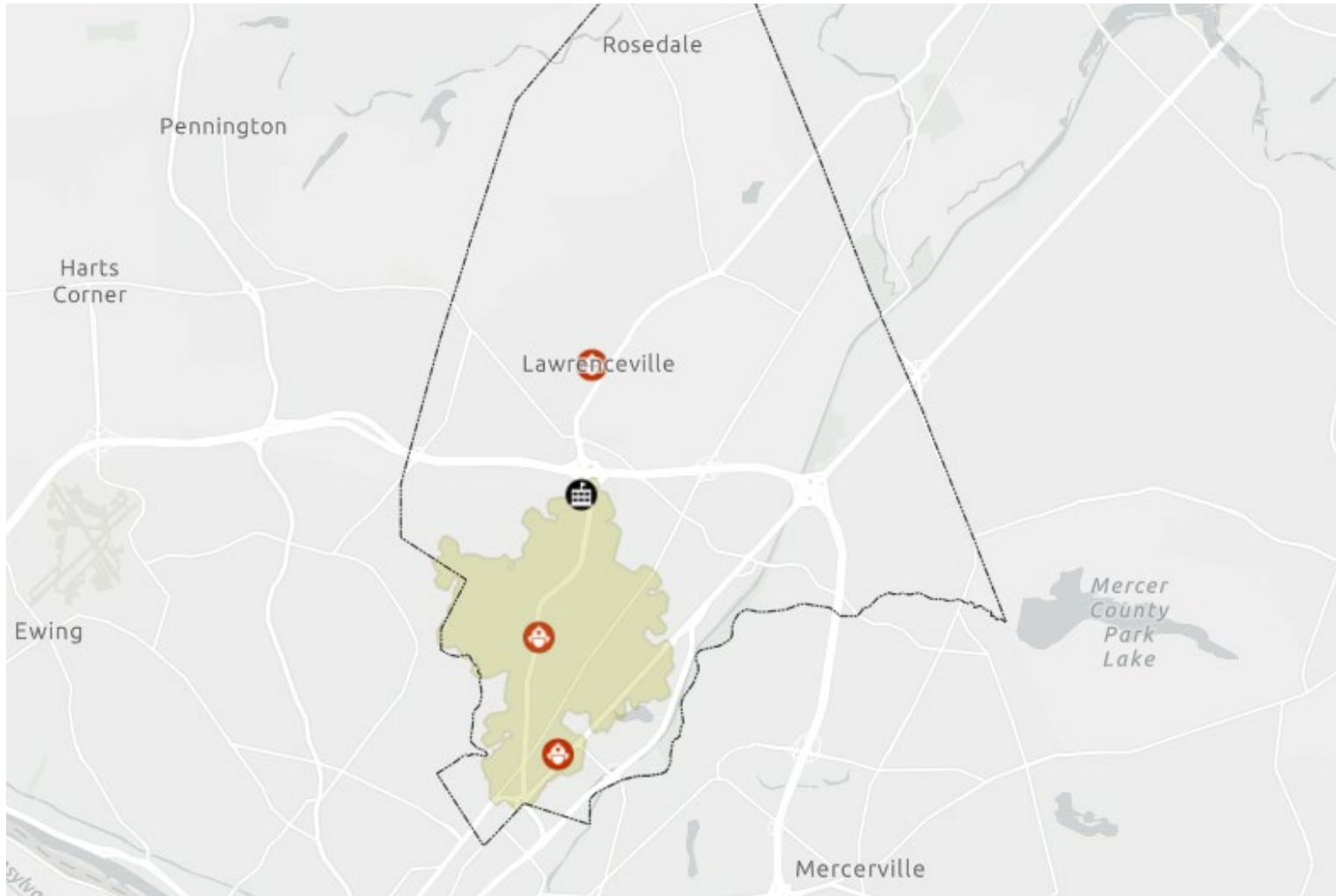
<https://arcg.is/D05mP0>

# 1.5 Mile Drive from Lawrenceville and Slackwood Stations

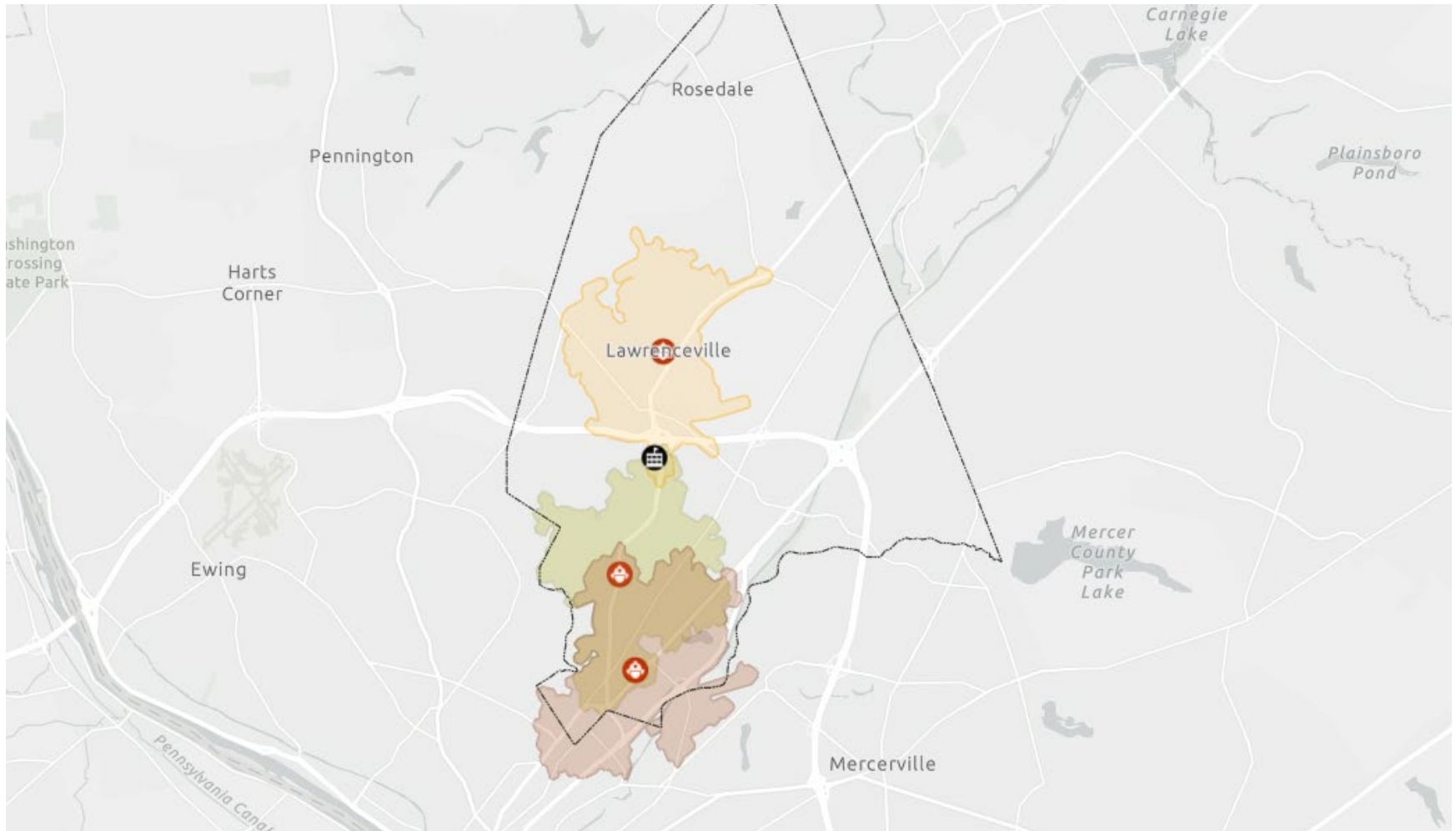


# 1.5 Mile Drive from Lawrence Road and EMS Stations

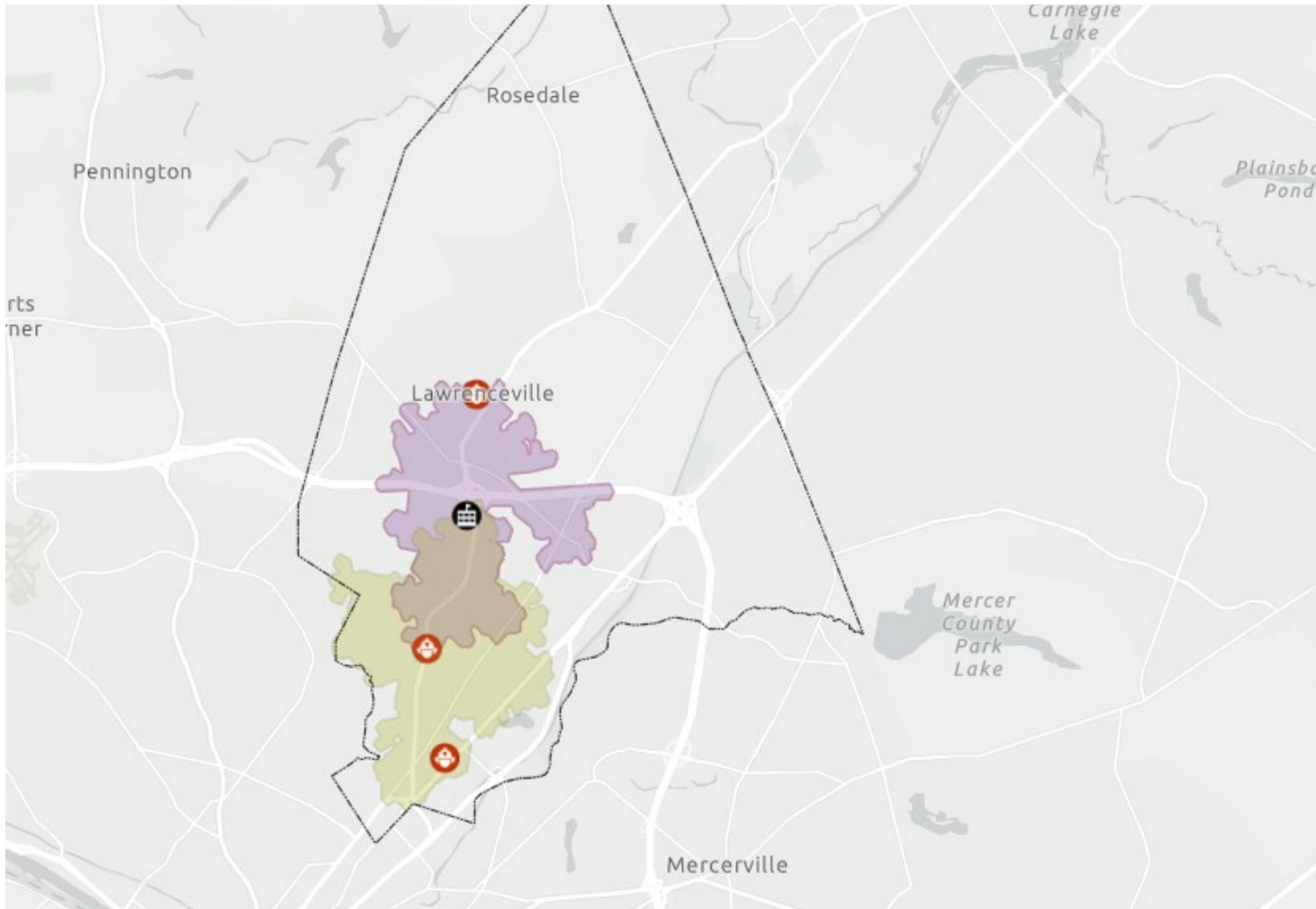
---



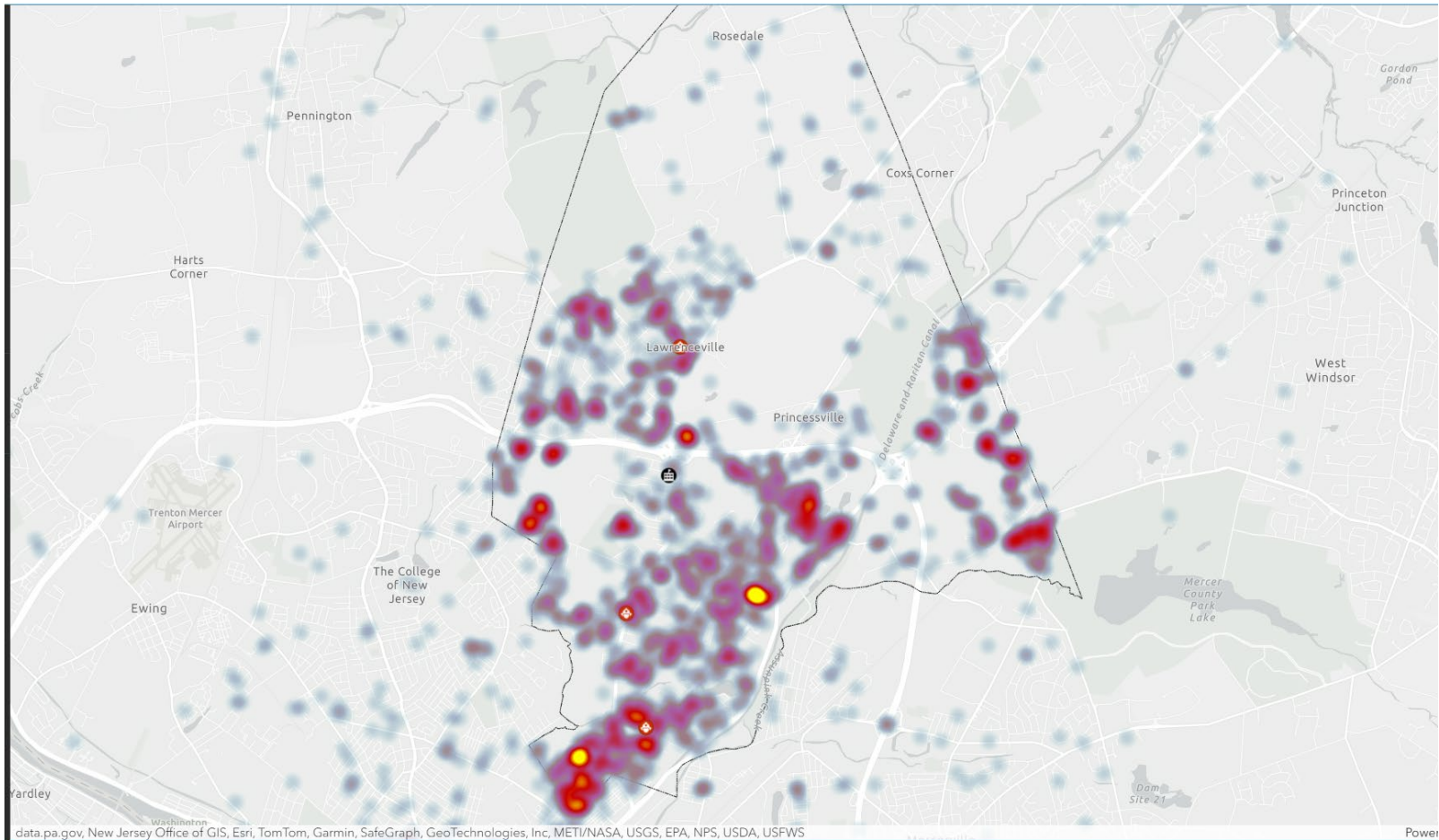
# All Three Stations 1.5 Mile Drive



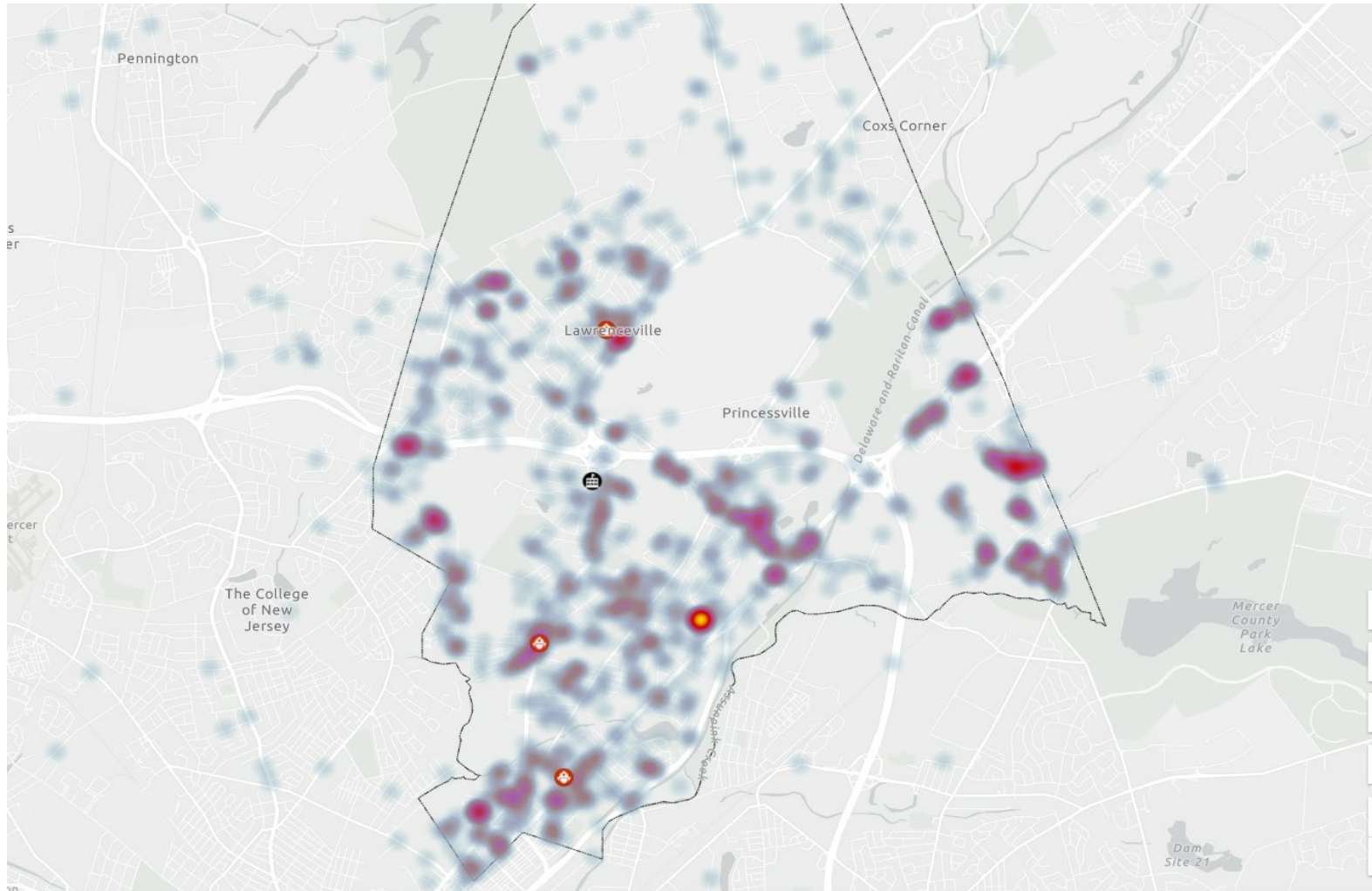
# 1.5 Mile Drive Municipal and Lawrence Road



# EMS Calls in 2025 for Lawrenceville Amb.



# Fire Calls in Lawrenceville 2025



# Next Steps

---

- Follow Up Interviews
- Supplemental Data Requests
- Complete Data Analysis
- Develop Baseline Report
- Interim Recommendations
- Draft Options Report
- Final Report

# Questions

---



Paul Bishop – [pbishop@cgr.org](mailto:pbishop@cgr.org)