

Thanks for the information however, on your original reply the picture appeared to be of Coastal Hwy (route 1), dual highway. I wanted to be clear the state regulation of 40' from the PT for driveway entrances also applied to any intersecting streets.

Thanks again!

Daune Hinks

Daune Hinks

Building Official

Town of Dewey Beach

105 Rodney Avenue

Dewey Beach, DE 19971

Office: 302-227-6363 x 2

dhinks@townofdeweybeach.com

From: Schlitter, Matt (DeIDOT) <Matt.Schlitter@delaware.gov>

Sent: Tuesday, August 8, 2023 3:30 PM

To: Daune Hinks <dhinks@townofdeweybeach.com>

Subject: RE: Town of Dewey Beach -- Dewey Code about driveway entrances -- question

Mr. Hinks,

I'm not sure I am clear on "intersecting of two side roads". It would apply to any intersection from a state maintained roadway. I believe the reason is to give the driver behind the turning vehicle enough time to be alerted of the turning movement and react.

Thanks,

Matt Schlitter

South District Public Works Engineer

302.853.1340 (Office)

From: Daune Hinks <dhinks@townofdeweybeach.com>

Sent: Tuesday, August 8, 2023 12:23 PM

To: Schlitter, Matt (DeIDOT) <Matt.Schlitter@delaware.gov>

Subject: FW: Town of Dewey Beach -- Dewey Code about driveway entrances -- question

Hi Matt.

I have an additional question.

Concerning the state regulation of 40' from the PT for driveway entrances, does this criteria also apply to the intersecting of two side roads? (see attachment).

Thanks for your help.

Daune Hinks

Daune Hinks

Building Official

Town of Dewey Beach

105 Rodney Avenue

Dewey Beach, DE 19971

Office: 302-227-6363 x 2

dhinks@townofdeweybeach.com

From: Daune Hinks
Sent: Friday, August 4, 2023 1:25 PM
To: Schlitter, Matt (DelDOT) <Matt.Schlitter@delaware.gov>
Subject: RE: Town of Dewey Beach -- Dewey Code about driveway entrances -- question

Thank you very much!

Have a nice weekend.

Daune Hinks

Daune Hinks
Building Official
Town of Dewey Beach
105 Rodney Avenue
Dewey Beach, DE 19971
Office: 302-227-6363 x 2
dhinks@townofdeweybeach.com

From: Schlitter, Matt (DelDOT) <Matt.Schlitter@delaware.gov>
Sent: Friday, August 4, 2023 1:15 PM
To: Daune Hinks <dhinks@townofdeweybeach.com>
Subject: RE: Town of Dewey Beach -- Dewey Code about driveway entrances -- question

Point of Tangent. It's the point where the radius ends and the road turns straight.

Thanks,
Matt Schlitter
South District Public Works Engineer
302.853.1340 (Office)

From: Daune Hinks <dhinks@townofdeweybeach.com>
Sent: Friday, August 4, 2023 12:32 PM
To: Schlitter, Matt (DelDOT) <Matt.Schlitter@delaware.gov>
Subject: RE: Town of Dewey Beach -- Dewey Code about driveway entrances -- question

Matt,

initials PT stand for?



Thanks for the information however what do the

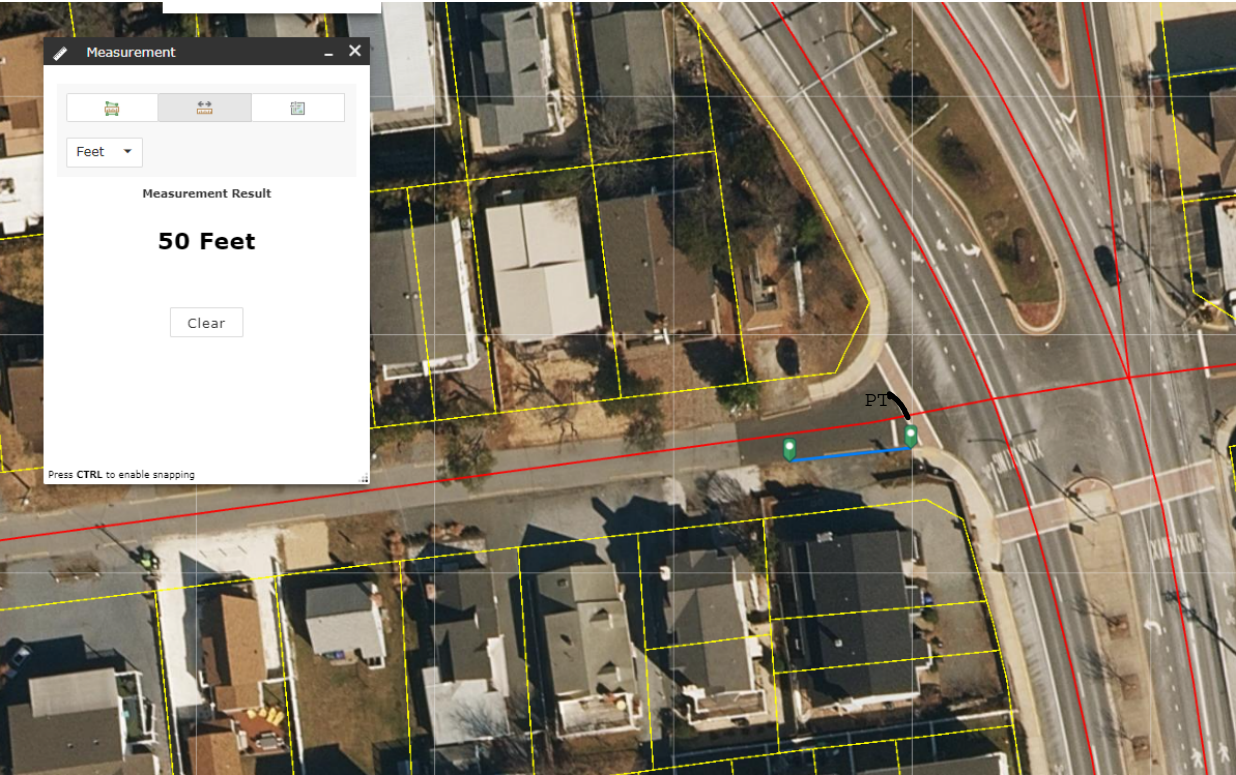
Daune Hinks

Daune Hinks
Building Official
Town of Dewey Beach
105 Rodney Avenue
Dewey Beach, DE 19971
Office: 302-227-6363 x 2
dhinks@townofdeweybeach.com

From: Schlitter, Matt (DelDOT) <Matt.Schlitter@delaware.gov>
Sent: Friday, August 4, 2023 12:06 PM
To: Daune Hinks <dhinks@townofdeweybeach.com>
Subject: RE: Town of Dewey Beach -- Dewey Code about driveway entrances -- question

Mr. Hinks,

Typically we view the entrance spacing from an intersection from the PT of the intersection (see example in pic below). The state regulation is 40' from the PT (see reg below). However, the language reads where feasible. In Dewey's circumstance, we would push the entrance as far away from the PT as possible.



1.6 ACCESS

1.6.1 Location of Entrances

Entrances shall be located where the highway alignment and profile are favorable, where there are no sharp curves, steep grades or other factors that would limit sight lines, in order to provide the appropriate sight distance, in accordance with Section 5.4, Sight Distance. Refer to Figure 1.5.1 for guidance on entrance spacing. When feasible and practical, two adjacent commercial properties should use a common ingress and egress from the public highway. The first property owner should establish and record a cross access easement regarding the location and design of such ingress and egress subject to the review and approval of DeIDOT.

Access locations and allowable movements shall be determined at DeIDOT's discretion including but not limited to; granting an access to a State-maintained roadway, requiring design and operational modifications, restricting one or more turning movements or denying the access. For individual residential access requirements, refer to Chapter 7.

Considerations for the placement of entrances should include evaluation of sight distance, location of adjacent entrances, length of auxiliary lanes, distance from intersecting streets, adjacent street queue lengths and the adjacent street speed limit. **Where feasible, entrances shall not be located within 40 feet of an intersection radius,** within queues of adjacent intersections or on acceleration and deceleration lanes. The applicant may be required to provide analysis to document how a proposed access point will satisfy the requirements of this manual. See Chapter 2 for additional information on Traffic Operational Analyses and

Thanks,
Matt Schlitter
South District Public Works Engineer
302.853.1340 (Office)

From: Daune Hinks <dhinks@townofdeweybeach.com>
Sent: Friday, August 4, 2023 11:03 AM
To: Schlitter, Matt (DelDOT) <Matt.Schlitter@delaware.gov>
Subject: Town of Dewey Beach -- Dewey Code about driveway entrances -- question

Good morning, Matt.

The town is looking into a possible conflict (with another subject in our code) concerning LOTS / Parcels and driveway entrances.

Most lots are standard 50' wide x 100' deep lots. The code prohibits driveway entrances within 50 feet of an intersection.

DEWEY CODE:

[§185-87 H](#)

[H.](#)

Driveways.

(1)

Driveway entrances may be constructed no closer than 50 feet to any intersection.

QUESTION: **Where does an intersection point begin?** (see attachment for 2 different scenarios.)

Diagram 1: of a side street intersecting into Coastal Hwy (Route 1)

Intersection begins at point A, point B or point C?

Diagram 2: of 2 side streets intersecting each other.

Intersection begins at point A, point B or other location?

Sorry for the 'poor' sketch however we need to have a specific DELDOT beginning / intersection point in which to possibly resolve our code conflict.

Thanks for your help.

Daune Hinks

Daune Hinks

Building Official

Town of Dewey Beach

105 Rodney Avenue

Dewey Beach, DE 19971

Office: 302-227-6363 x 2

dhinks@townofdeweybeach.com