

Rehoboth Bay

VAN DYKE AVENUE

COLLINS AVENUE

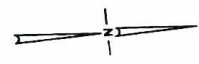
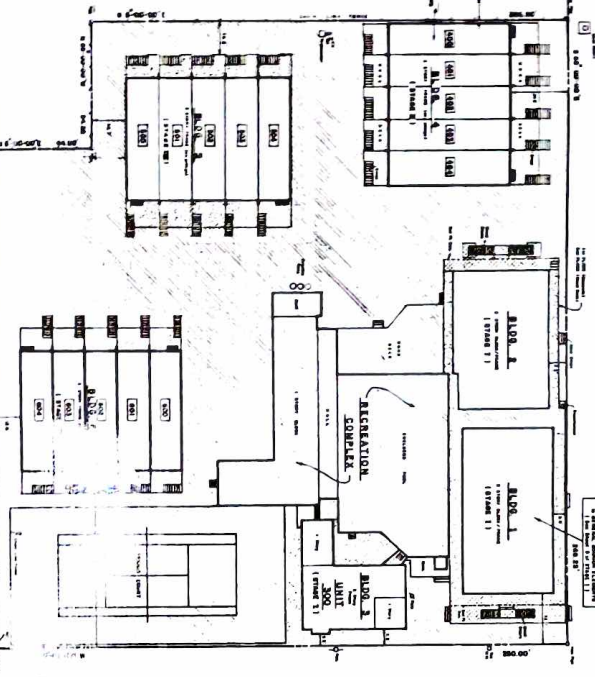
DELAWARE ROUTE ONE

ENGINEER'S CERTIFICATION
 I, the undersigned, a duly Licensed Professional Engineer in the State of Delaware, do hereby certify that the above described plan and specifications were prepared by me or under my direct supervision and that I am a duly Licensed Professional Engineer in the State of Delaware.

John S. [Signature]
 JOHN S. [Name]
 LICENSE NO. [Number]

STATE ELEVATION CERTIFICATION
 I, the undersigned, a duly Licensed Professional Engineer in the State of Delaware, do hereby certify that the above described plan and specifications were prepared by me or under my direct supervision and that I am a duly Licensed Professional Engineer in the State of Delaware.

[Signature]
 [Name]
 LICENSE NO. [Number]



LAND OWNERSHIP
 THE TRACT OF LAND SHOWN ON THIS PLAN SHALL BE COMMON OWNERSHIP OF A CONDOMINIUM UNDER THE DELAWARE CONDOMINIUM ACT, 10 DEL. CODE TITLE 21, § 1101.

- LEGEND**
- PRINCIPAL COMMON ELEMENTS
 - SECONDARY COMMON ELEMENTS
 - COMMON ELEMENTS SUBJECT TO DECLARATORY LIMITATIONS
 - COMMON ELEMENTS SUBJECT TO GENERAL DECLARATIONS
 - UNIT ELEMENTS
 - UNIT NUMBER

DECLARATION PLAN
COVE CONDOMINIUM

AMENDED
 7049 - 30-179
 STATE OF DELAWARE
 DEPT. OF REGISTRY - DIVISION OF RECORDS & DOCUMENTS
 300 N. MARKET STREET, 2ND FLOOR
 DOVER, DE 19901
 DATE: 01/20/20

MAIN ASSOCIATES
 ARCHITECTS
 100 N. MARKET STREET, 2ND FLOOR
 DOVER, DE 19901

