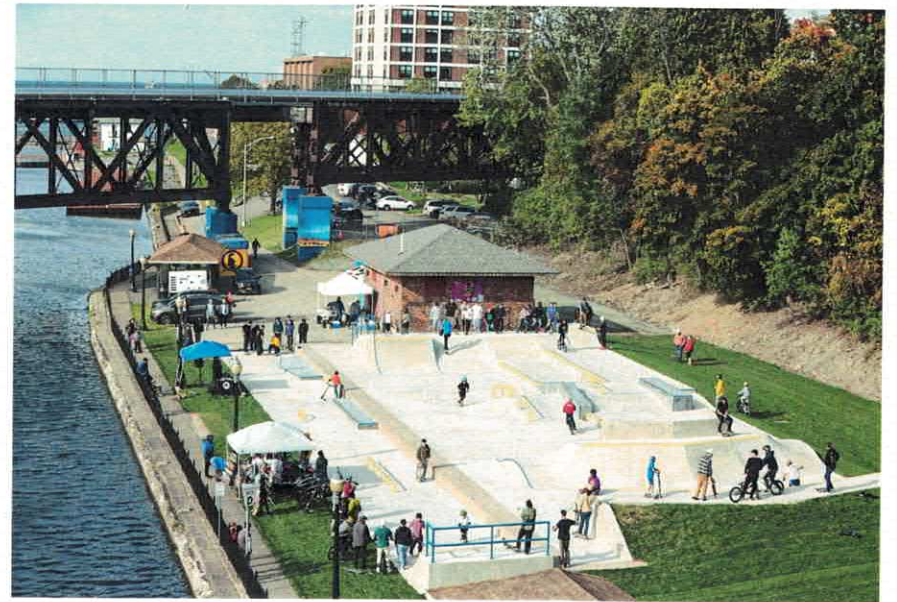


NEW SKATEPARK FOR WATERTOWN



Let's turn this



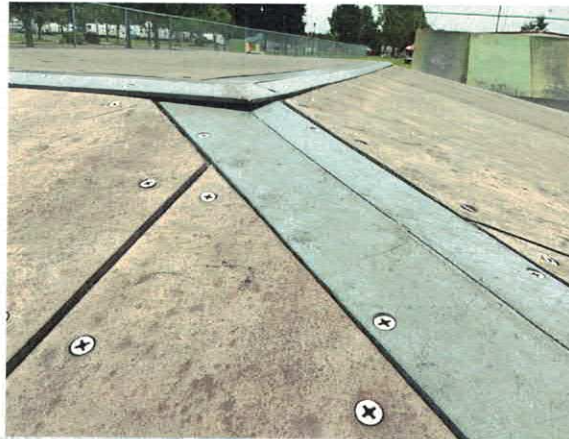
Into this!

IDENTIFY THE NEED

- Damaged
- Poorly designed
- Too small
- No flow
- No permanent home

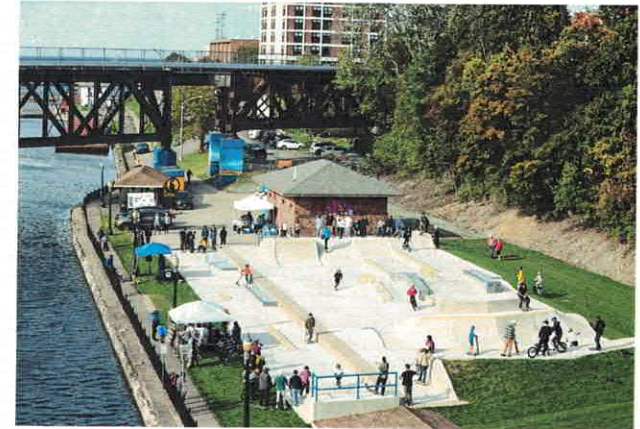


DAMAGE



IDENTIFY THE NEED

- Inadequate for city of this size
(Population from 2020 Census)
 - Watertown - 24,685
 - Oswego - 16,921 (top)
 - Saranac Lake - 4,887 (bottom)
- Teens & young adults underserved
- Offer more positive options
- Undersupported & underutilized parks
- Regional draw
 - Jefferson County



BENEFITS OF BUILDING

- Expanding parks improves quality of life
 - Gives people a reason to stay and live here
- Positive & creative outlet
 - Healthy hobbies
- Tourism and regional draw
- Events and competitions
- Increase tax revenue



WHAT WE WANT

- CONCRETE
 - Creatively flexible
 - Durable
 - Easy to maintain
- More space
- Mix of street & transition
 - Full list of rider requested features available
- BMX friendly
- Beginner friendly



FLEXIBILITY OF CONCRETE



PROPOSED OPTIONS

- Prices range from \$50-\$75 sq ft
 - Oswego park - \$62.5 sq ft
- Option A: 20,000 Sq ft - \$1.25m
- Option B: 10,000 Sq ft - \$625k
- Option C: DIY with permission
- Builder recommendations
 - Team Pain
 - Evergreen
 - Dreamland
 - California
 - Pillar Design



OPTION A

- 20,000 Sq ft
- Regional level facility
- More space = more variety
- Safest
 - Especially new riders
- Event ready with room to spare
- \$1.25m



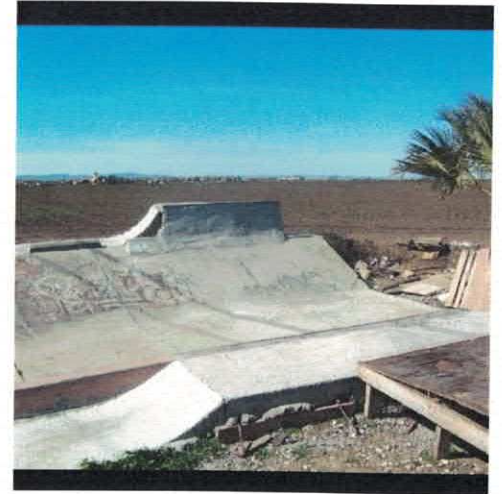
OPTION B

- 10,000 Sq ft
- City level facility
- Space for variety with good design
- Safer
- Event ready
- \$625k



OPTION C

- Completely DIY - community driven
- Long celebrated history
- Allows for regular updates/maintenance
- Previous efforts removed
- Results may vary



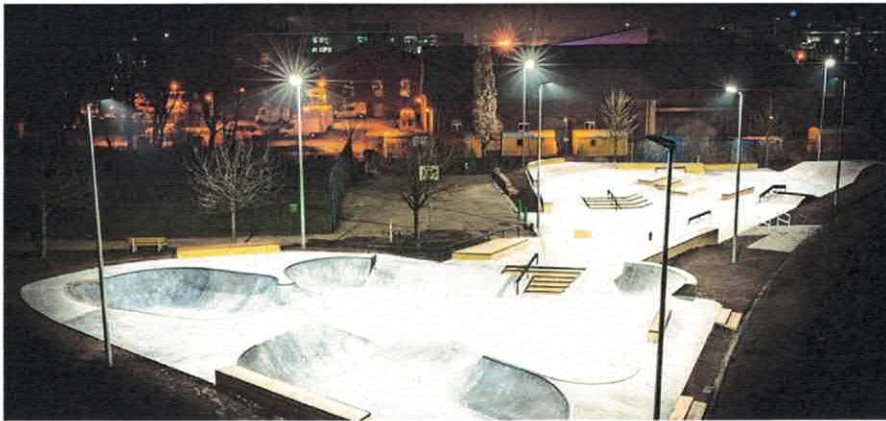
ADDING LOCAL FLAVOR

- River influence
- Wave ramp
- Flying saucer
- Local stone
- Art wall



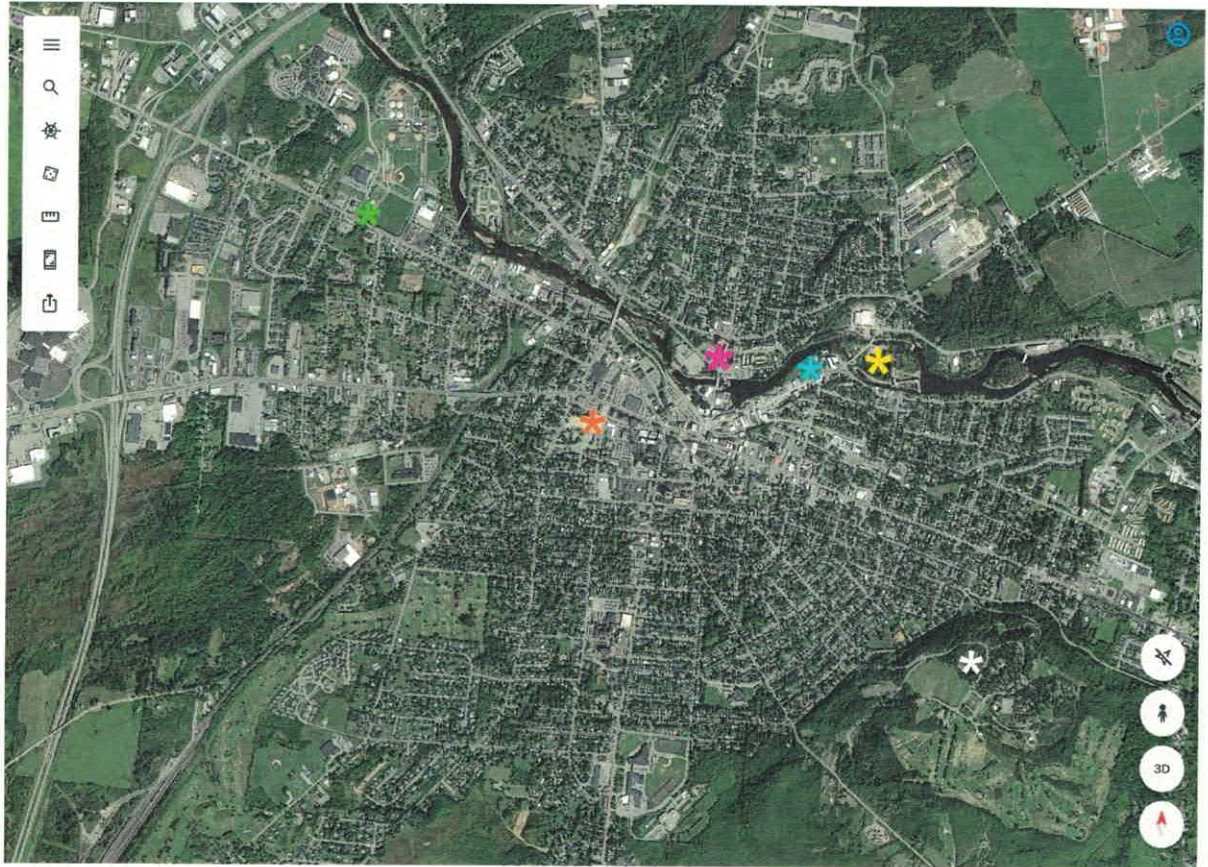
OTHER AMENITIES

- Canopy/covering
- Bathrooms
- Lights
- Memorial bench



LOCATIONS

- Accessible
- Central
- Food, gas, bathroom
- Suggestions
 - County Fairgrounds
 - Mercy Hospital site
 - Dublin Park
 - Factory Square Park
 - Sewall's Island
 - Thompson Park



FUNDING

- We aren't naïve to financial reality
 - City isn't expected to cover everything
 - Naysayers shouldn't jump to conclusions
- Costs will be spread over time to decrease burden
- Local fundraising and donations
 - Need city endorsement first
 - In kind donations
- Jefferson County
 - Unused ARP funds
- Grants
 - The Skatepark Project
 - Public art



PUBLIC ART GRANTS



THE SKATEPARK PROJECT

- Free Consult
- Eligible and well qualified
- TSP requirements
 - for park
 - for local support
- Must have plan before grant
 - Park design
 - Some fundraising done



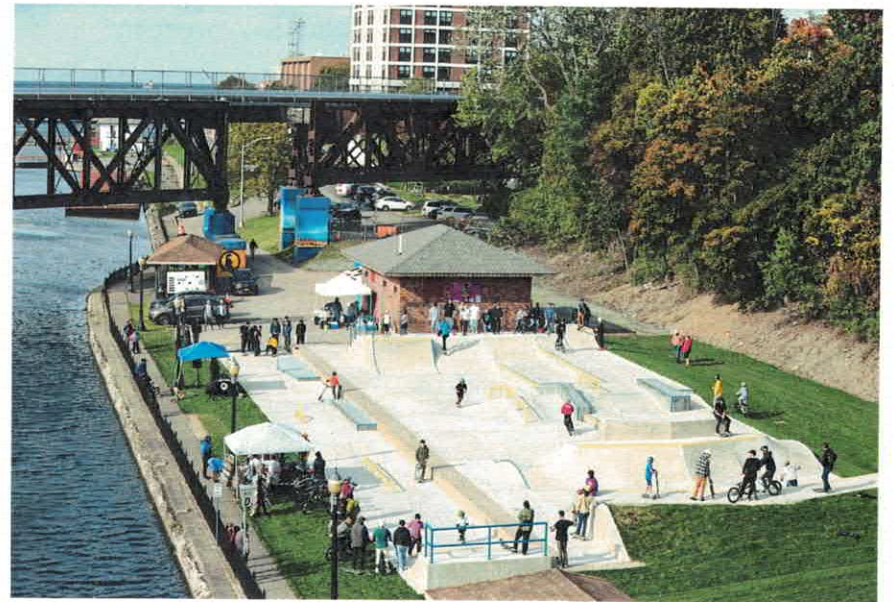
IT STARTS WITH YOU

**WE CAN'T GO FURTHER
WITHOUT CITY ENDORSEMENT**

NEW SKATEPARK FOR WATERTOWN



Let's turn this



Into this!