



NORTH

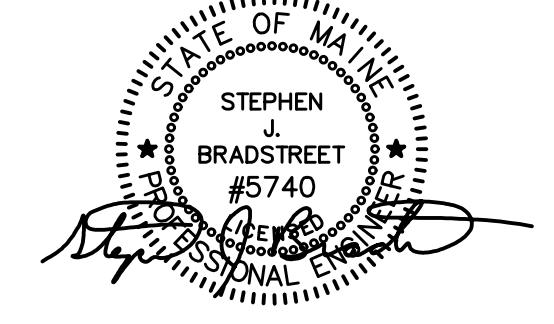
TOWN OF CAPE ELIZABETH
OPEN SPACE
32216/308

NOTE
DRIVEWAY CULVERT WILL BE INSTALLED IN ACCORDANCE WITH TOWN STANDARDS.

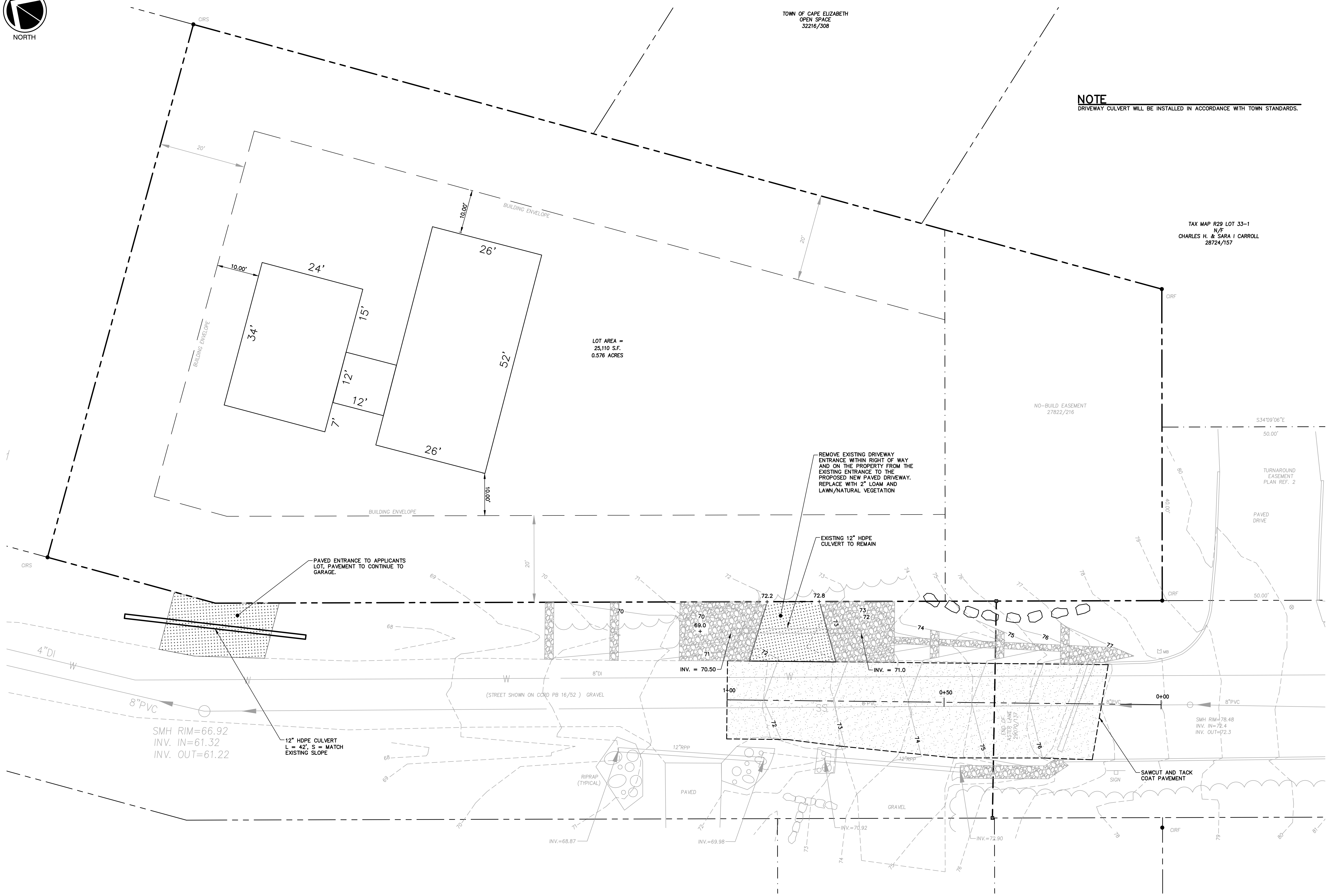
TAX MAP R29 LOT 33-1
N/F
CHARLES H. & SARA I CARROLL
28724/157

Site:
**PRIVATE ROAD
EXTENSION
AMENDMENT**
8 ASTER LANE
CAPE ELIZABETH, MAINE

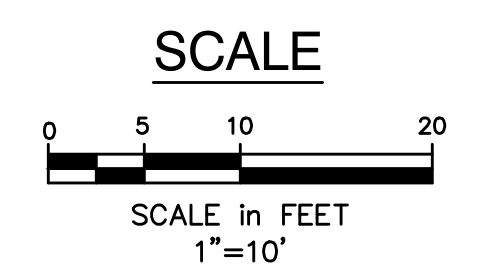
Prepared for:
**MARGARET BIRLEM
8 ASTER LANE
CAPE ELIZABETH, MAINE**



CIVIL ENGINEER:
STEPHEN J. BRADSTREET, PE #5740
400 COMMERCIAL STREET, SUITE 404
PORTLAND, ME 04101
207-772-2891



GRADING, DRAINAGE & EROSION CONTROL PLAN
SCALE: 1" = 10'



GRADING, DRAINAGE & EROSION CONTROL PLAN

D	DRIVEWAY AMENDMENT	02/22/21
C	APPROVED PLANS	10/15/19
B	PRELIMINARY PLAN REVIEW	04/30/18
A	COMPLETENESS REVIEW	03/30/18

No.	Revision/Issue	Date
Design by:	SJB	Checked by: SJB
Drawn by:	PM	Approved by: SJB

Project:	181.06027	Date:	MAY 2018
----------	-----------	-------	----------

Sheet No: **C-101**
Sheet 2 of 2

2/19/2021 3:55 PM 181.06027BEC.DWG