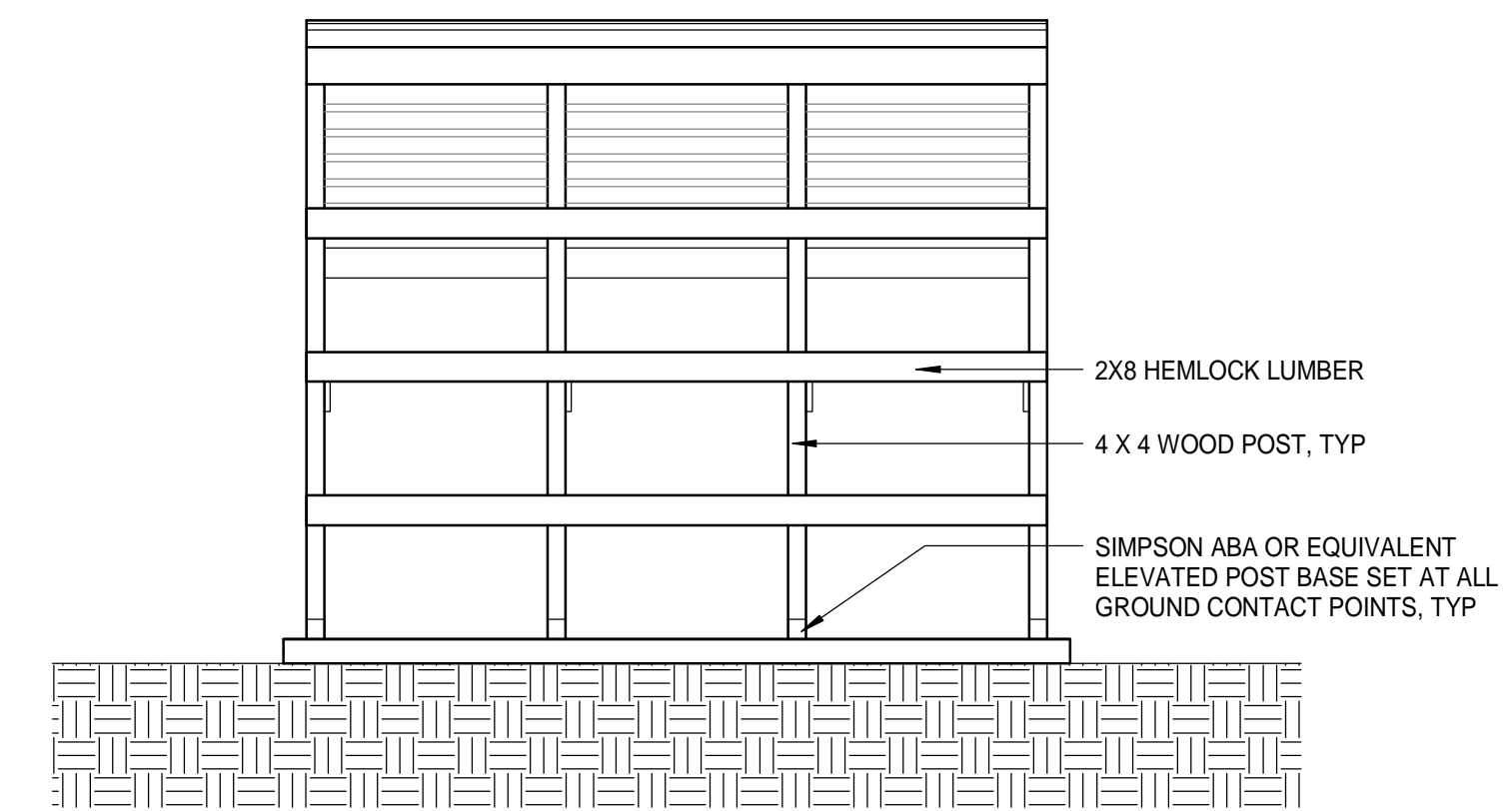
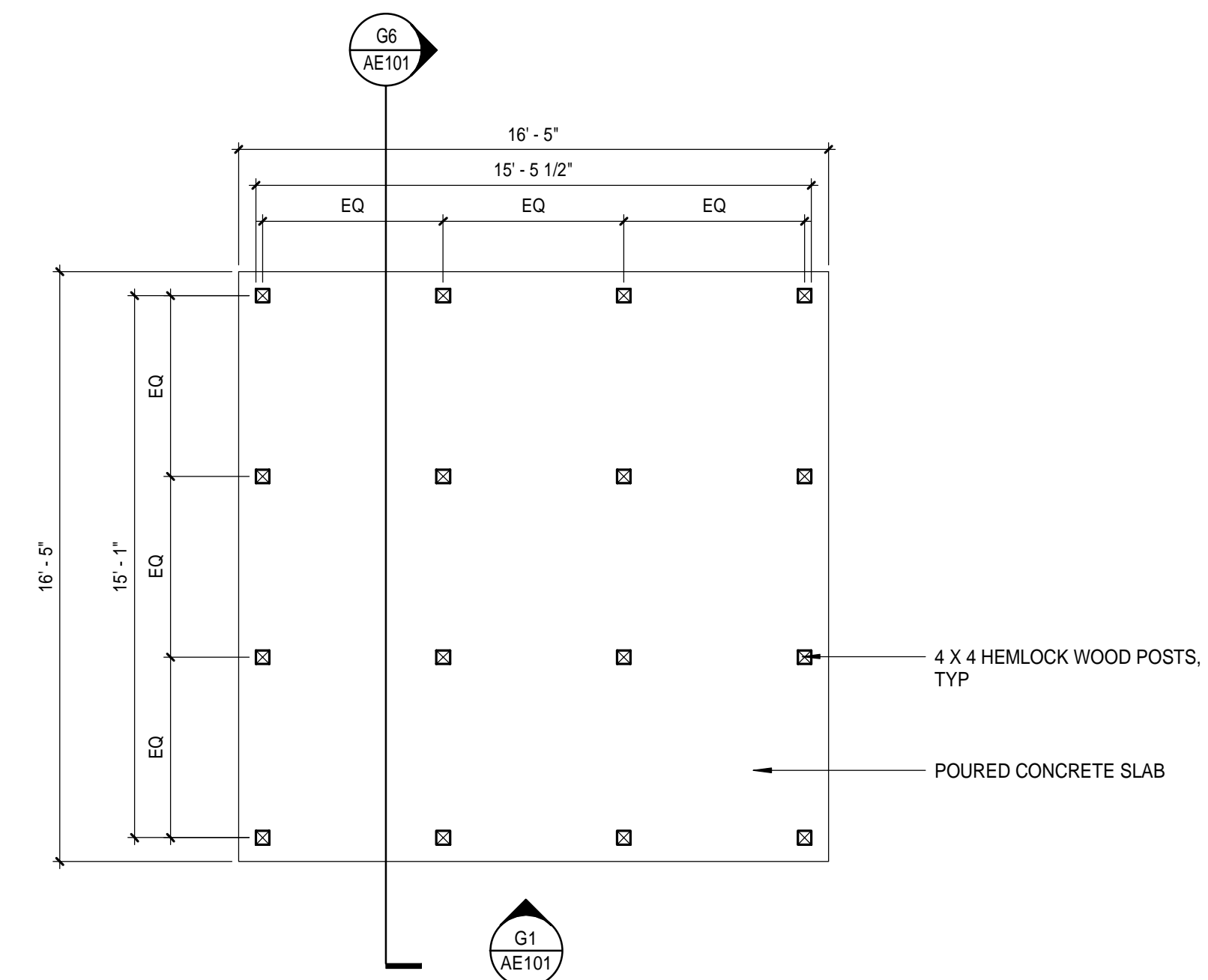


SHED - SECTION G6  
1/4" = 1'-0"



SECTION - SHED 2 G1  
1/4" = 1'-0"



LEVEL 1 FLOOR PLAN C1  
1/4" = 1'-0"

REV	DESCRIPTION	DATE

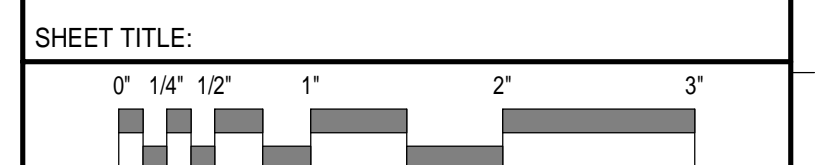
SITE PLAN REVIEW  
07-21-20

CURRENT ISSUE STATUS:

MICHAEL FRIEDLAND  
THE LUMBERY

287 OCEAN HOUSE ROAD, CAPE ELIZABETH, ME

FLOOR PLAN AND ELEVATIONS



SCALE: AS NOTED

PROJECT MANAGER:	-	PROJECT NO.:	00000
A/E OF RECORD:	-		
JOB CAPTAIN:	-		
DRAWN BY:	AP		

AE101

SHEET No.