

August 10, 2025

Evergy, Inc
Marsha Crane
PO Box 208
Wichita, KS 67201

**Re: Response to Request for Information and Comments in Regards to the
Routing Study for Garden Plain, KS Buffalo Flats Substation to Delaware, OK
345kV Transmission Line Project**

Dear Ms. Crane,

In response to Evergy's request for help to identify issues related to the proposed 345kV transmission line routes the attached assessment identifies issues associated with the most southern route through Cowley County. The details of historical and archeological impacts are included and outlined.

Sincerely,



Dr. Laura Cary Branstetter
Great-great-granddaughter of W.W. Dowler



James Branstetter

Six Generation Dowler Family Farm Representatives
1688 Tiara Pines Circle, Derby KS 67037

cc: **Board of County Commissioners Cowley County, 311 E 9th Winfield, KS 67156**

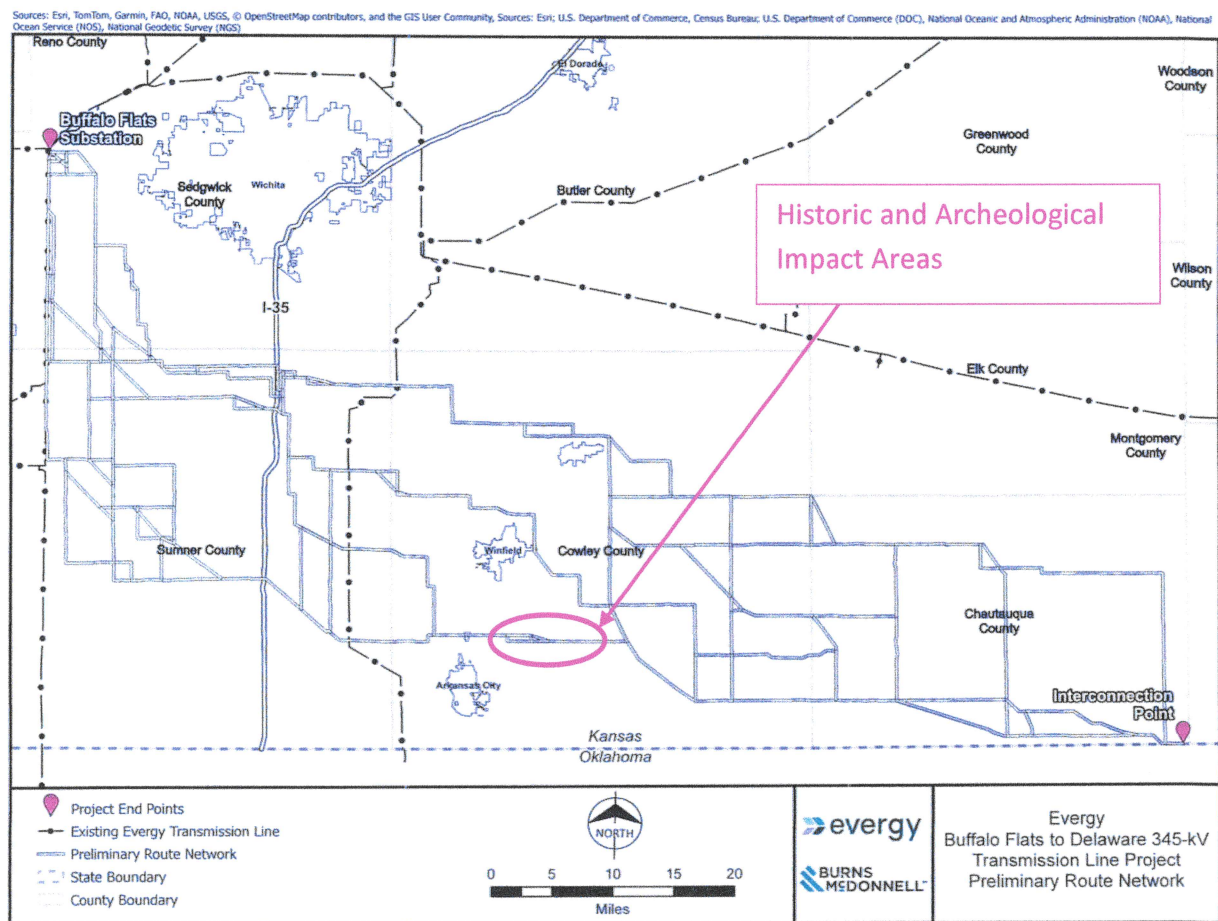
Kansas Corporation Commission, 1500 SW Arrowhead Rd Topeka, KS 66604
Kansas Historical Society, 6425 SW Ave Topeka, KS 66615
Etzanao Conservancy - Georgia Zavala, 31639 US-77, Arkansas City, KS 67005
Sheryl & John Cary, 1207 N. Hamilton Circle, Derby, KS 67037
Spencer & Kristin McFarland, 23893 95th Rd, Winfield, KS 67156
Kevin & Megan McFarland, 13816 234th Rd, Winfield, KS 67156
William & Belinda Mueller, 12302 242nd Rd, Winfield, KS 67156
Marvin & Yvonne Duncan, 11102 242nd Rd, Winfield, KS 67156
Rodney Eastman, 1450 N Dry Creek, Derby, KS 67037
Julie Grant, 2911 W 44th S, Stillwater, OK 74074
David & Lois Stone, 24651 91st Rd, Winfield, KS 67156
Whitney & Tera Cox, 24224 91st Rd, Winfield, KS 67156
Brian Wells, 1520 E Chestnut Ave, Arkansas City, KS 67005
Clint Bryant, 24730 71st Rd, Winfield, KS 67156

Questionnaire Response for 345kV Transmission Line Project

Garden Plain, KS Buffalo Flats Substation – Delaware, OK

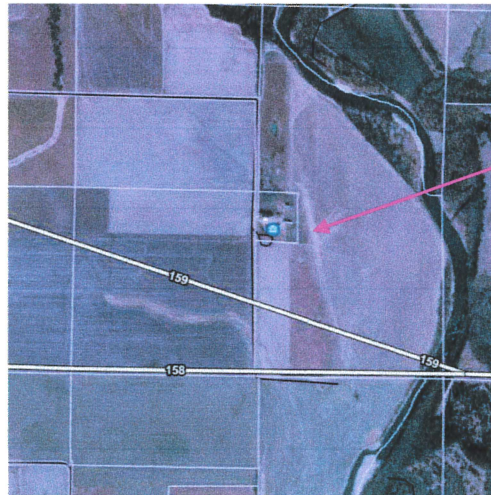
In response to the request for help to identify issues related to the proposed routes the following is a list of issues associated to the most southern proposed route through Cowley County. Specifically, the historic and archeological significant areas directly west of the Walnut River in the general area of 242nd road are highlighted. These areas are as follows and noted in map below:

1. Historical Magnolia Ranch, 13816 234th Rd, Winfield KS
2. Archeological Area - Native American Village Etzanoa, Arkansas City KS
3. Century Farm – Sheryl A Dowler Cary, 19214 242nd Rd, Winfield KS



1. Historical Magnolia Ranch, 13816 234th Rd, Winfield KS

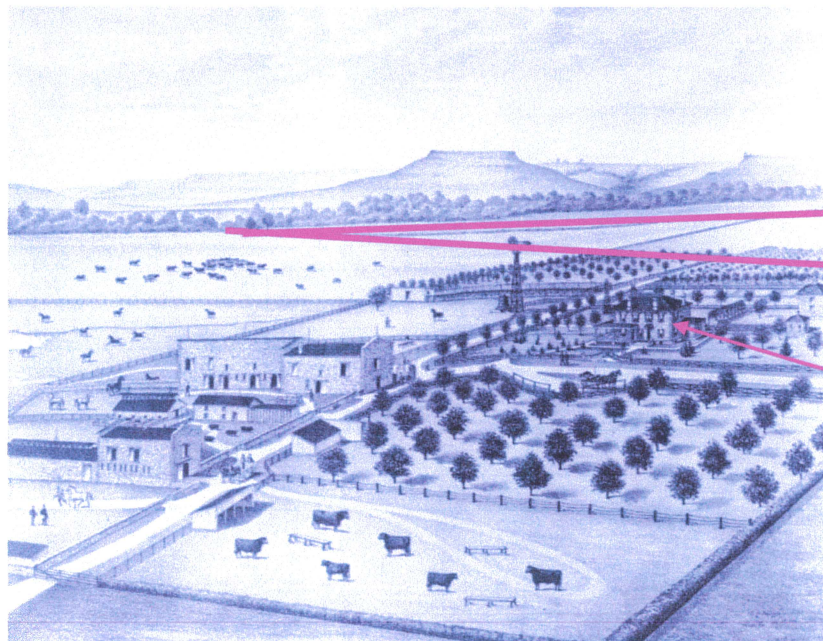
The first issue noted is the transmission lines #158 and #159, on the west of the Walnut River bottom crossing the Historic Magnolia Ranch, which is on the National Registry of Historical Places (Reference No. 73000750). This is seen in Figure 1.1 and 1.2.



Magnolia Ranch:
13816 234TH Rd,
Winfield KS

National Register of
Historical Places Ref.
No.73000750

Fig. 1.1 Magnolia Ranch shown in proximity to the proposed transmission lines #158 and #159



#158

#159

The Magnolia:
View Looking SSE

Fig. 1.2 Magnolia Farm and Stock Ranch (1st Published in Cowley County, KS Plat Map 1887) with Proposed Transmission Line Route #158 and #159

The plate, Figure 1.2, first published in the Cowley County, KS Plat Map of 1887, shows the ranch with the two-story Renaissance style limestone mansion. This was built in 1883 by Colonel Arthur H. Green, a disabled Civil War veteran who came the area in 1881. The large observation towers in the roof are designed to oversee the ranch river bottom ground. The proposed transmission lines #158 and #159 both run directly through the southern view effectively altering the historical and architectural value influencing how the property is perceived.

If the installation of the transmission lines involves federal funding, licenses, or permits, then the project would trigger Section 106 review. This review process requires federal agencies to consider the potential impact on historic properties and explore alternatives to minimize harm.

2. Archeological – Etzanoa, Lower Walnut Village

The second issue involves the well-established Etzanoa archeological site. As can be seen in Figures 2.1 and 2.2 the transmission lines #155 and #156, running parallel to 242nd road, are in close proximity to the Lower Walnut archeological site of Etzanoa discovered in 2015. This was a historical city of the ancestral Wichita tribe, housing 20,000 and located along the Walnut River basin that flourished between 1450 and 1700. The historical city was visited by Spanish conquistador Juan de Onate in 1601. Reference, Etzanoa Conservancy.

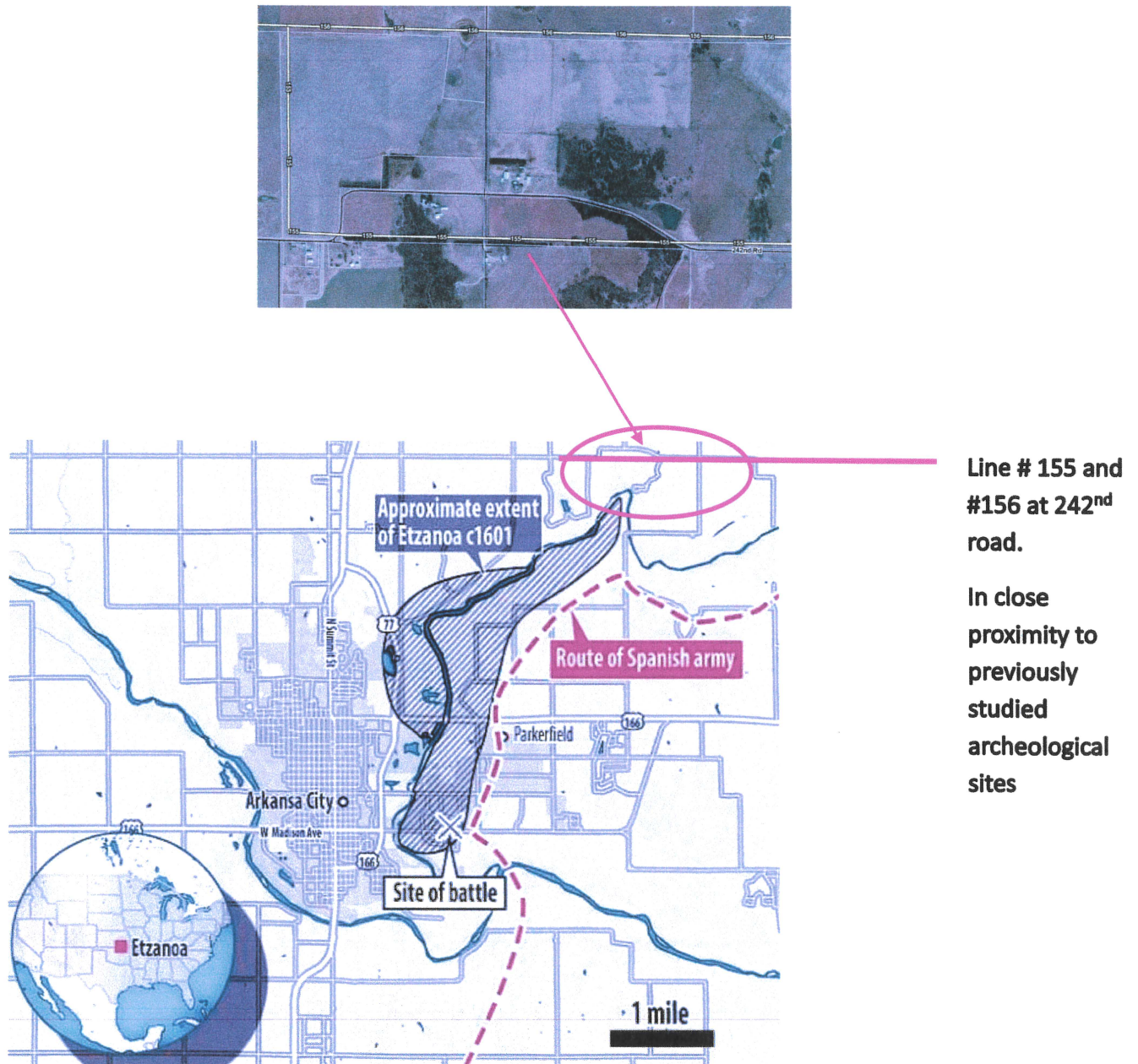


Fig. 2.1: Line #155 and #156 Proximity to Lower Walnut – Etzanoa Archeological Site

Additionally, archeological investigations are common in the area. Figure 2.2, shows those conducted from 1994 through 1996 by the Kansas State Historical Society in advance of two highways, U.S. 166 and the Arkansas City bypass, the latter built in conjunction with a U.S. Corps of Engineers flood control levee. The complex of eight archeological sites studied include Killdeer (14CO332), Living the Dream (14CO501), Havelock (14CO332), and Larcom-Haggard (14CO1) and the Country Club sites. Reference Plains Anthropologist, Journal of the Plains Anthropology Society, Vol 45, Aug 2000, Number 173.



Fig. 2.2: The Lower Walnut Archeological Sites at Arkansas City, Kansas

Proposed transmission lines #155 and #156 lie just outside of the previous archeological studied areas. Scattered surface finds are found in proximity of the proposed path which would warrant an archeological study to the proposed transmission line paths #155 and #156 as more archeological sites continue to be found in this area.

3. Century Farm – Sheryl A Dowler Cary, 19214 242nd Rd, Winfield KS

The third issue is the impact of the farming / business practices to the Dowler farm. As can be seen in Figure 3.1 the transmission line #154 and #155, envelopes and bisects the Dowler family farm. The six generation Dowler family farm descended from William Wesley Dowler and his son Doliver Domer Dowler who came to the area in 1881 from Wheeling, West Virginia. Figure 3.2, the Cowley County, KS Plat Map, published in 1887, shows the Dowler farm has maintained production for the past 138 years.

**Dowler
Family Farm
Homestead**

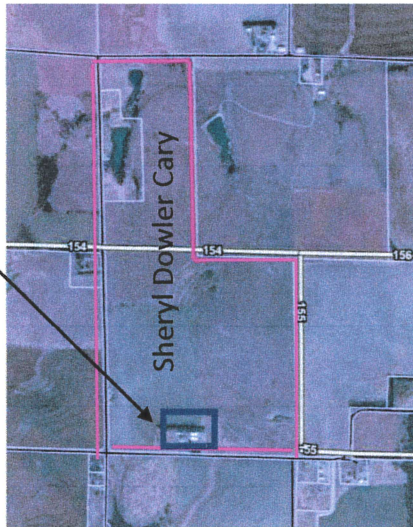


Fig. 3.1 Transmission lines #154 and #155 Encompassing and Bisecting Homestead Farm

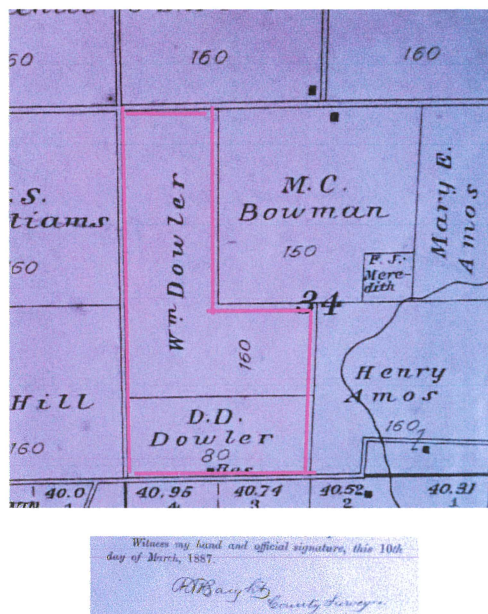


Fig. 3.2 Dowler Farm Boundary Shown in Cowley County, KS Plat Map, published in 1887

The installation of the transmission lines would impact the farming practices and business plan. The lines would no longer allow use of an electric fence in the proximity of the transmission lines, eliminates aerial spraying, has an impact to GPS tractor steering, reduces future pond development for cattle production, impacts existing leases and easements, and dictates the loss of prescribed pasture burning and pivot irrigation management practices.

Additionally, the farm is beautiful with flint hill prairie bluffs visible in the northeast and an impressive ridge showcasing the bottom land to the south. The proposed transmission lines, #154 and #155, would effectively destroy that view that has been the backdrop for six generations over the past 138 years.

In conclusion, there are two other possible choices for delivering electricity to the Buffalo Flats Substation that do not go through a registered historical site and an established archeological area for the Wichita Native Tribe. Based on the presented facts in this document the most southern route is not a choice.