

2. SITE INFORMATION OBTAINED FROM THE FOLLOWING:

A. SURVEY ENTITLED "CELL SITE SURVEY DOV TIDEWATER"
PREPARED BY COLLIERS ENGINEERING OF MT. LAUREL, NJ
DATED 01/26/2023.

3. THE CONTRACTOR SHALL COMPLY WITH ALL APPLICABLE CODES, ORDINANCES, LAWS AND REGULATIONS OF ALL MUNICIPALITIES, UTILITY COMPANIES OR OTHER PUBLIC/GOVERNING AUTHORITIES.

4. THE CONTRACTOR SHALL BE RESPONSIBLE FOR OBTAINING ALL PERMITS AND INSPECTIONS THAT MAY BE REQUIRED BY ANY FEDERAL, STATE, COUNTY OR MUNICIPAL AUTHORITIES.

5. THE CONTRACTOR SHALL NOTIFY THE CONSTRUCTION MANAGER, IN WRITING, OF ANY CONFLICTS, ERRORS OR OMISSIONS PRIOR TO THE SUBMISSION OF BIDS OR PERFORMANCE OF WORK.

6. THE CONTRACTOR SHALL BE RESPONSIBLE FOR PROTECTING ALL EXISTING SITE IMPROVEMENTS PRIOR TO COMMENCING CONSTRUCTION. THE CONTRACTOR SHALL REPAIR ANY DAMAGE AS A RESULT OF CONSTRUCTION OF THIS FACILITY AT THE CONTRACTOR'S EXPENSE TO THE SATISFACTION OF THE OWNER.

7. THE SCOPE OF WORK FOR THIS PROJECT SHALL INCLUDE PROVIDING ALL MATERIALS, EQUIPMENT AND LABOR REQUIRED TO COMPLETE THIS PROJECT. ALL EQUIPMENT SHALL BE INSTALLED IN ACCORDANCE WITH MANUFACTURER'S RECOMMENDATIONS.

8. THE CONTRACTOR SHALL VISIT THE PROJECT SITE PRIOR TO SUBMITTING THE BID TO VERIFY THAT THE PROJECT CAN BE CONSTRUCTED IN ACCORDANCE WITH THE CONTRACT DOCUMENTS AND CONSTRUCTION DRAWINGS.

9. THE CONTRACTOR SHALL VERIFY ALL EXISTING DIMENSIONS AND CONDITIONS PRIOR TO COMMENCING ANY WORK. ALL DIMENSIONS OF EXISTING CONSTRUCTION SHOWN ON THESE DRAWINGS MUST BE VERIFIED. THE CONTRACTOR SHALL NOTIFY THE CONSTRUCTION MANAGER OF ANY DISCREPANCIES PRIOR TO ORDERING MATERIAL OR PROCEEDING WITH CONSTRUCTION.

10. THE PROPOSED FACILITY WILL COMPLY WITH ALL STATE AND LOCAL STORMWATER ORDINANCES.

11. NO NOISE, SMOKE, DUST OR ODOR WILL RESULT FROM THIS FACILITY AS TO CAUSE A NUISANCE.

12. THE FACILITY IS UNMANNED AND NOT FOR HUMAN HABITATION (NO HANDICAP ACCESS IS REQUIRED).

13. THE FACILITY DOES NOT REQUIRE POTABLE WATER OR SANITARY SERVICE.

14. CONTRACTOR SHALL VERIFY ANTENNA ELEVATION AND AZIMUTHS WITH RF ENGINEERING PRIOR TO INSTALLATION.

15. ALL STRUCTURAL ELEMENTS SHALL BE HOT DIPPED GALVANIZED STEEL.

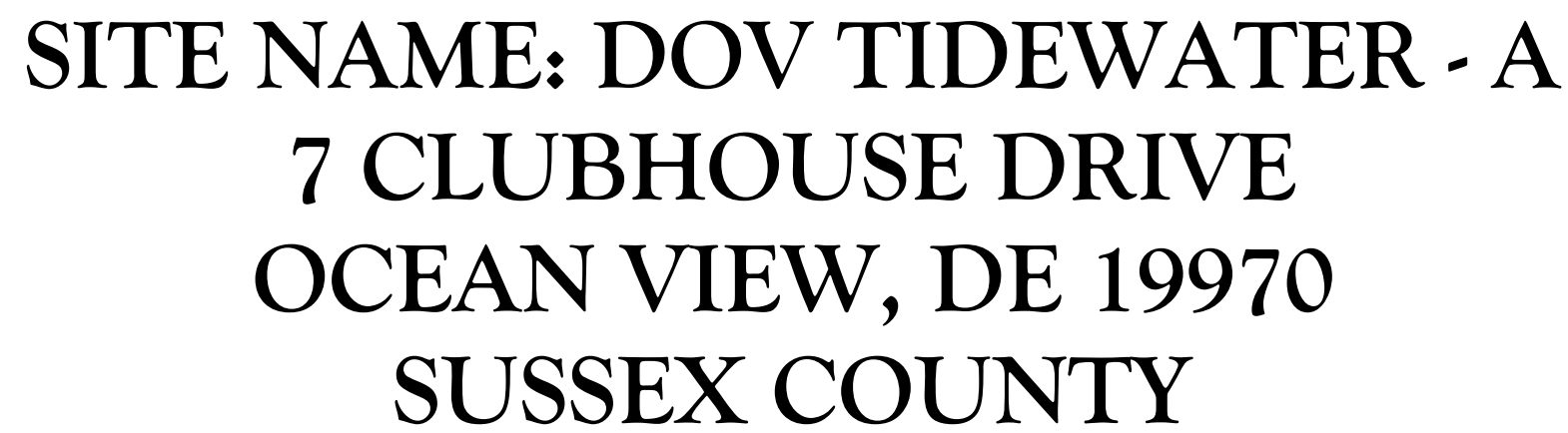
16. CONTRACTOR MUST FIELD LOCATE ALL EXISTING UNDERGROUND UTILITIES PRIOR TO ANY EXCAVATION.

17. CONSTRUCTION SHALL NOT COMMENCE UNTIL COMPLETION OF A PASSING STRUCTURAL ANALYSIS CERTIFIED BY A LICENSED PROFESSIONAL ENGINEER. THE STRUCTURAL ANALYSIS IS TO BE PERFORMED BY OTHERS.

18. CONTRACTOR SHALL CONTACT STATE SPECIFIC ONE CALL SYSTEM THREE WORKING DAYS PRIOR TO ANY EARTH MOVING ACTIVITIES.

SOURCE: BING MAPS

ALL WORK AND MATERIALS SHALL BE PERFORMED AND INSTALLED IN ACCORDANCE WITH THE CURRENT EDITIONS OF THE FOLLOWING CODES AS ADOPTED BY THE LOCAL GOVERNING AUTHORITIES. NOTHING IN THESE PLANS IS TO BE CONSTRUED TO PERMIT WORK NOT CONFORMING TO THE LATEST EDITIONS OF THE FOLLOWING CODES.	
1. 2021 INTERNATIONAL BUILDING CODE	8. INSTITUTE FOR ELECTRICAL AND ELECTRONICS ENGINEERS 81 IEEE C2 LATEST EDITION
2. NFPA 70, NATIONAL ELECTRICAL CODE, 2014	9. TELCORDIA GR-1275
3. DELAWARE STATE FIRE PREVENTION REGULATIONS 2015	10. ANSI T1.311
4. AMERICAN INSTITUTE OF STEEL CONSTRUCTION 360-10	11. PROPOSED USE: UNMANNED TELECOM FACILITY HANDICAP REQUIREMENTS: FACILITY IS UNMANNED AND NOT
5. AMERICAN CONCRETE INSTITUTE	12. FOR HUMAN HABITATION. HANDICAPPED ACCESS NOT REQUIRED.
6. TIA-222-H	13. CONSTRUCTION TYPE: IIB
7. TIA 607 FOR GROUNDING	14. USE GROUP: U



SITE INFORMATION

LATITUDE:	N 38° 32' 10.99" (NAD 83)
LONGITUDE:	W 75° 06' 16.98" (NAD 83)
GROUND ELEVATION:	14.2± AMSL (NAVD 88)
JURISDICTION:	OCEAN VIEW
PARCEL:	134-16.00-289.00

APPLICANT

COMPANY:	CELLCO PARTNERSHIP d/b/a VERIZON WIRELESS
ADDRESS:	512 TOWNSHIP LINE ROAD BUILDING 2, FLOOR 3
CITY, STATE, ZIP:	BLUE BELL, PA 19422

PROPERTY OWNER

OWNER:	BEAR TRAP PARTNERS LLC.
ADDRESS:	7 CLUBHOUSE DRIVE
CITY, STATE, ZIP:	OCEAN VIEW, DE 19970

SITE ACQUISITION

COMPANY:	WIRELESS ACCESS TECHNOLOGIES, INC.
CONTACT:	SUE MANCHEL
PHONE:	(267) 253-2762

<u>POWER PROVIDER</u>	
COMPANY:	DELMARVA POWER
PHONE:	(800) 375-7117
<u>TELEPHONE PROVIDER</u>	
COMPANY:	VERIZON
PHONE:	(800) 837-4966
<u>POLICE</u>	
COMPANY:	OCEAN VIEW POLICE DEPARTMENT
ADDRESS:	201 CENTRAL AVE
CITY, STATE, ZIP:	OCEAN VIEW, DE 19970
PHONE:	(302) 539-1111
<u>FIRE</u>	
COMPANY:	MILLVILLE VOLUNTEER FIRE COMPANY
ADDRESS:	35554 ATLANTIC AVE
CITY, STATE, ZIP:	MILLVILLE, DE 19967
PHONE:	(302) 539-7557
IN CASE OF EMERGENCY, CALL 9-1-1	

SHEET	DESCRIPTION
T-1	TITLE SHEET
Z-1	ZONING INFORMATION
Z-2	SITE PLAN AND SITE NOTES
Z-3	PARTIAL SITE PLAN
Z-4	COMPOUND PLAN AND ELEVATION VIEW
A-1	CONSTRUCTION DETAILS
A-2	CONSTRUCTION DETAILS
A-3	CONSTRUCTION DETAILS
A-4	CONSTRUCTION DETAILS
A-5	CONSTRUCTION DETAILS
A-6	CONSTRUCTION DETAILS
A-7	CONSTRUCTION DETAILS

Copyright © 2023, Colliers Engineering & Design All Rights Reserved. This drawing and all the information contained herein is authorized for use only by the party for whom the services were contracted or to whom it is certified. This drawing may not be copied, reused, disclosed, distributed or relied upon for any other purpose without the express written consent of Colliers Engineering & Design.



512 TOWNSHIP LINE ROAD
BUILDING 2, FLOOR 3
BLUE BELL, PA 19422

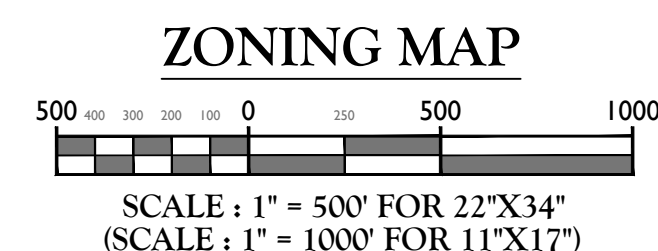
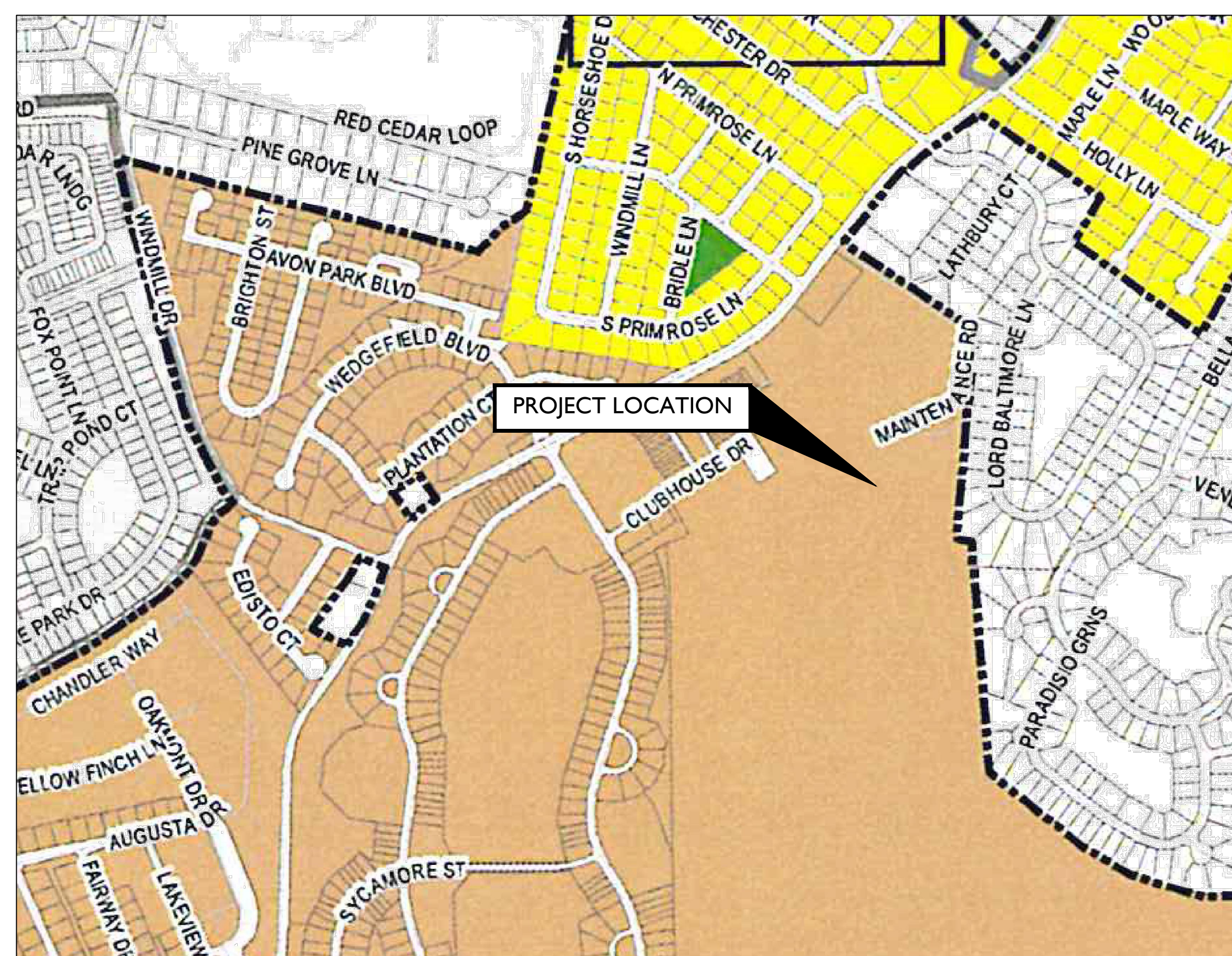
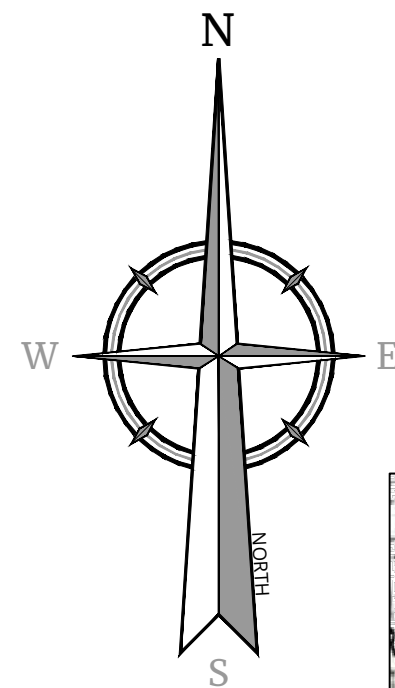
[illegible]

IT IS A VIOLATION OF LAW FOR ANY PERSON,
UNLESS THEY ARE ACTING UNDER THE DIRECTION
OF THE RESPONSIBLE LICENSED PROFESSIONAL
ENGINEER, TO ALTER THIS DOCUMENT.










DOV TIDEWATER
7 CLUBHOUSE DRIVE
OCEAN VIEW, DE 19970
SUSSEX COUNTY

SHEET TITLE:	TITLE SHEET
SHEET NUMBER:	T-1

NOTE: DO NOT SCALE DRAWINGS FOR CONSTRUCTION.



ZONING LEGEND

	OS, Open Space		RPC, Residential Planned Community
	R-1, Residential Single-Family		MXPC, Mixed-Use Planned Community
	R-2, Residential 1- & 2-Family		GB-1, General Business-1
	R-3, Residential Townhouse & Multi-Family		GB-2, General Business-2
	HPOZ, Historic Preservation Overlay		

www.colliersengineering.com

Copyright © 2023, Colliers Engineering & Design. All Rights Reserved. This drawing and all the information contained herein is authorized for use only by the party for whom the services were contracted or to whom it is certified. This drawing may not be copied, reused, disclosed, distributed or relied upon for any other purpose without the express written consent of Colliers Engineering & Design.

Doing Business as  **MASER**
CONSULTING

CELLCO PARTNERSHIP d/b/a
VERIZON WIRELESS

512 TOWNSHIP LINE ROAD
BUILDING 2, FLOOR 3
BLUE BELL, PA 19422



811
Know what's below.
Call before you dig.

PROTECT YOURSELF
ALL STATES REQUIRE NOTIFICATION OF
EXCAVATORS, DESIGNERS, OR ANY PERSON
PREPARING TO DISTURB THE EARTH'S
SURFACE ANYWHERE IN ANY STATE

FOR STATE SPECIFIC DIRECT PHONE NUMBERS VISIT:
WWW.CALL811.COM

SCALE: AS SHOWN	JOB NUMBER: 22960035A
--------------------	--------------------------

0	07/21/23	ISSUED FOR ZONING	MEG	MEG	
A	04/11/23	ISSUED FOR REVIEW	FAC	MEG	
REV	DATE	DESCRIPTION	DRAWN BY	CHECK BY	

Matthew E. Graubart
 DELAWARE PROFESSIONAL ENGINEER
 LICENSE NO. 24147
 COLLIERIES ENGINEERING & DESIGN, INC.
 D.F. 1840

IT IS A VIOLATION OF LAW FOR ANY PERSON,
UNLESS THEY ARE ACTING UNDER THE DIRECTION
OF THE RESPONSIBLE LICENSED PROFESSIONAL
ENGINEER, TO ALTER THIS DOCUMENT.

SITE NAME:

DOV TIDEWATER
7 CLUBHOUSE DRIVE
OCEAN VIEW, DE 19970
SUSSEX COUNTY

Colliers
Engineering
& Design

MT. LAUREL
2000 Midlantic Drive,
Suite 100
Mt. Laurel, NJ 08054
Phone: 856.797.0412

COLLIERS ENGINEERING & DESIGN, INC.
DOING BUSINESS AS MASER CONSULTING

SHEET TITLE : ZONING INFORMATION

SHEET NUMBER : Z-1

NOTE: DO NOT SCALE DRAWINGS FOR CONSTRUCTION

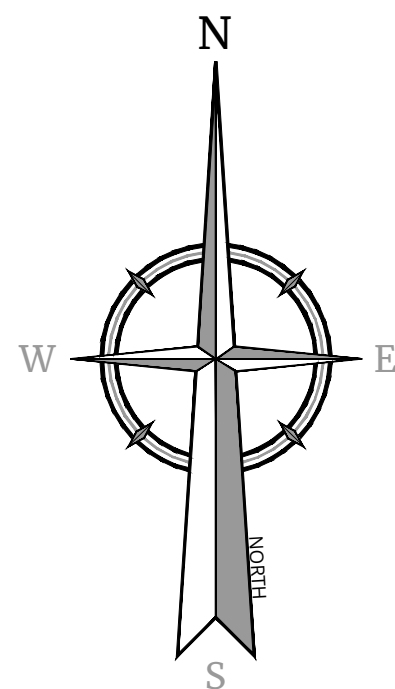
PROJECT LOCATION

SOURCE: GOOGLE EARTH

SITE NOTES

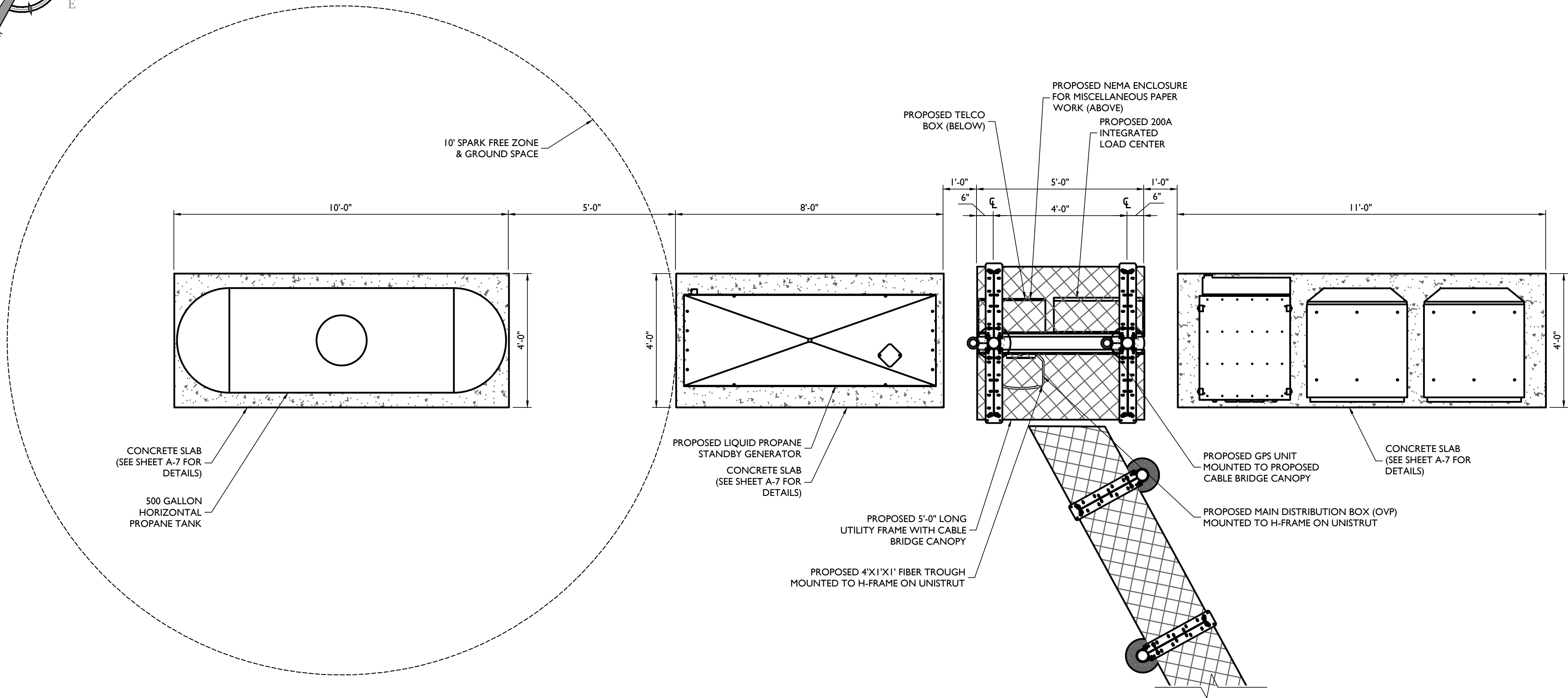
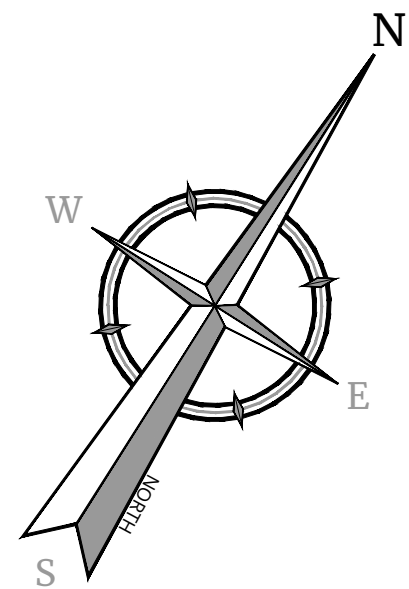
- ### LEGEND

MacPublish 17636\Zone\TEMPLATE\ATF.dwg\2-2 Rvt:MG241\BART



SHEET NUMBER : Z-2

NOTE: DO NOT SCALE DRAWINGS FOR CONSTRUCTION.



EQUIPMENT LAYOUT



SCALE : 1" = 2' FOR 22"X34"
(SCALE : 1" = 4' FOR 11"X17")

Colliers Engineering & Design

www.colliersengineering.com

Copyright © 2023, Colliers Engineering & Design All Rights Reserved. This drawing and all the information contained herein is authorized for use only by the party for whom the services were rendered or to whom it is certified. This drawing may not be copied, reused, disclosed, distributed or relied upon for any other purpose without the express written consent of Colliers Engineering & Design.

Doing Business as **MASER** CONSULTING

verizon

CELLCO PARTNERSHIP d/b/a
VERIZON WIRELESS

512 TOWNSHIP LINE ROAD
BUILDING 2, FLOOR 3
BLUE BELL, PA 19422

811 PROTECT YOURSELF!
ALL STATES REQUIRE NOTIFICATION OF
EXCAVATORS, DESIGNERS, OR ANY PERSON
PREPARING TO DISTURB THE EARTH'S
SURFACE ANYWHERE IN ANY STATE
Know what's below.
Call before you dig.
FOR STATE SPECIFIC DIRECT PHONE NUMBERS VISIT:
WWW.CALL811.COM

SCALE: AS SHOWN JOB NUMBER: 22960035A

REV	DATE	DESCRIPTION	DRAWN BY	CHECKED BY
0	07/21/23	ISSUED FOR ZONING	MEG	MEG
A	04/11/23	ISSUED FOR REVIEW	FAC	MEG

Matthew E. Grainger
DELAWARE PROFESSIONAL ENGINEER
LICENSED IN THE STATE OF PENNSYLVANIA
COLLIERS ENGINEERING & DESIGN, INC.
D.E. C. 034, P. 2840

IT IS A VIOLATION OF LAW FOR ANY PERSON,
UNLESS THEY ARE ACTING UNDER THE DIRECTION
OF THE RESPONSIBLE LICENSED PROFESSIONAL
ENGINEER, TO ALTER THIS DOCUMENT.

SITE NAME:

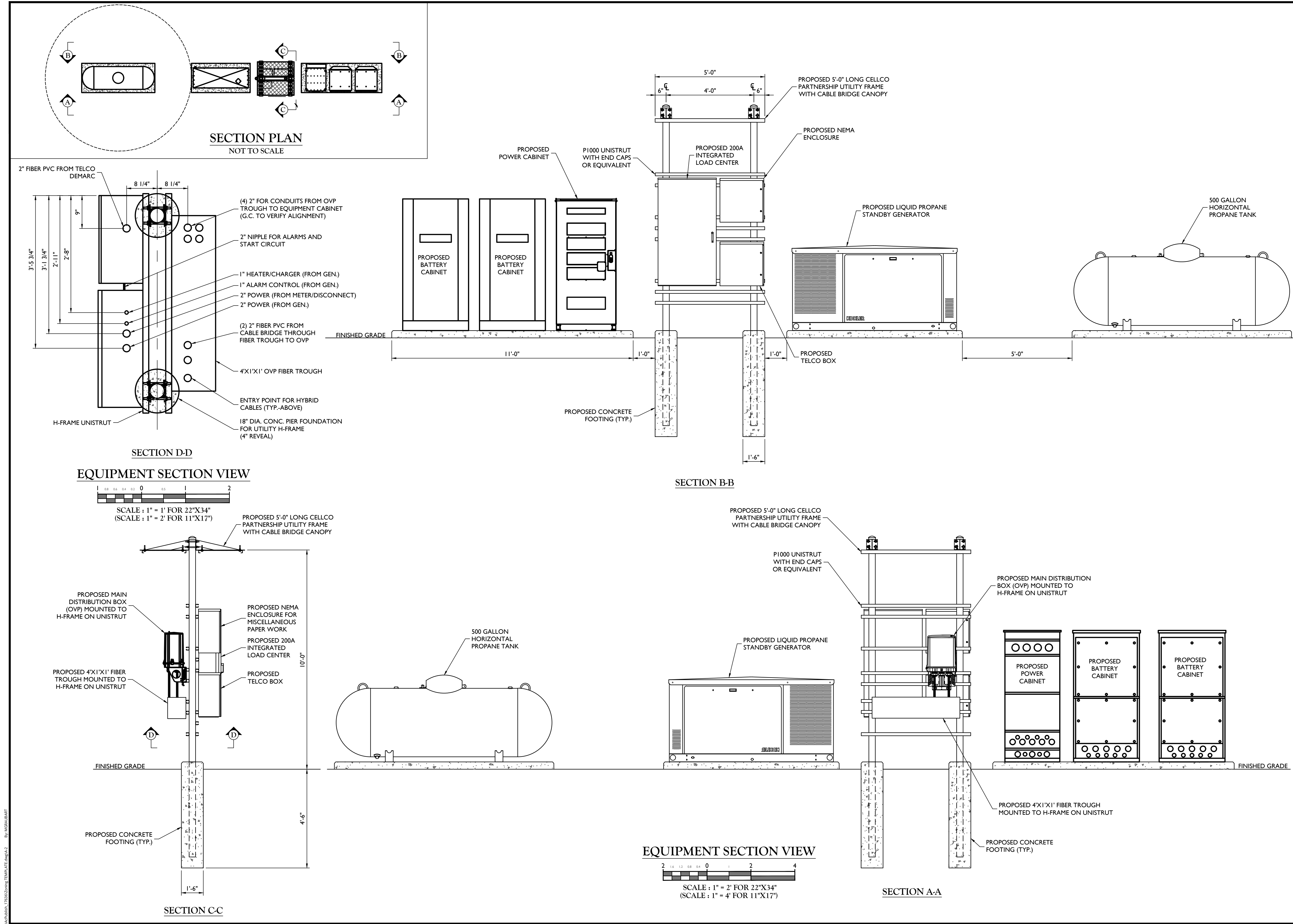
DOV TIDEWATER
7 CLUBHOUSE DRIVE
OCEAN VIEW, DE 19970
SUSSEX COUNTY

Colliers Engineering & Design
MT. LAUREL
2000 Midlantic Drive,
Suite 100
Mt. Laurel, NJ 08054
Phone: 856-797-0412
COLLIERS ENGINEERING & DESIGN, INC.
DOING BUSINESS AS MASER CONSULTING

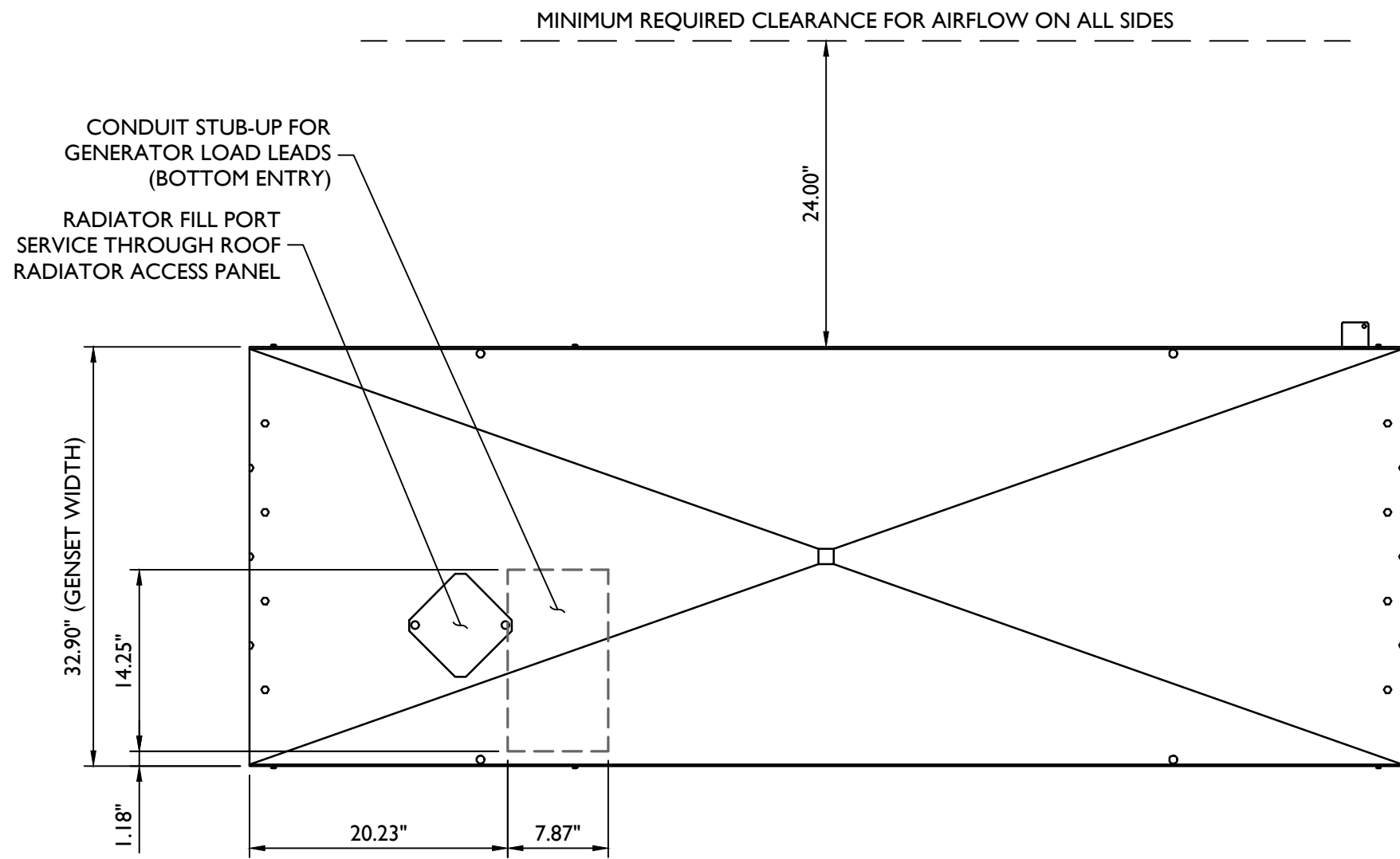
SHEET TITLE:
CONSTRUCTION DETAILS

SHEET NUMBER:
A-1

NOTE: DO NOT SCALE DRAWINGS FOR CONSTRUCTION.



REV	DATE	DESCRIPTION	DRAWN BY	CHECKED BY
0	07/21/23	ISSUED FOR ZONING	MEG	MEG
A	04/11/23	ISSUED FOR REVIEW	FAC	MEG

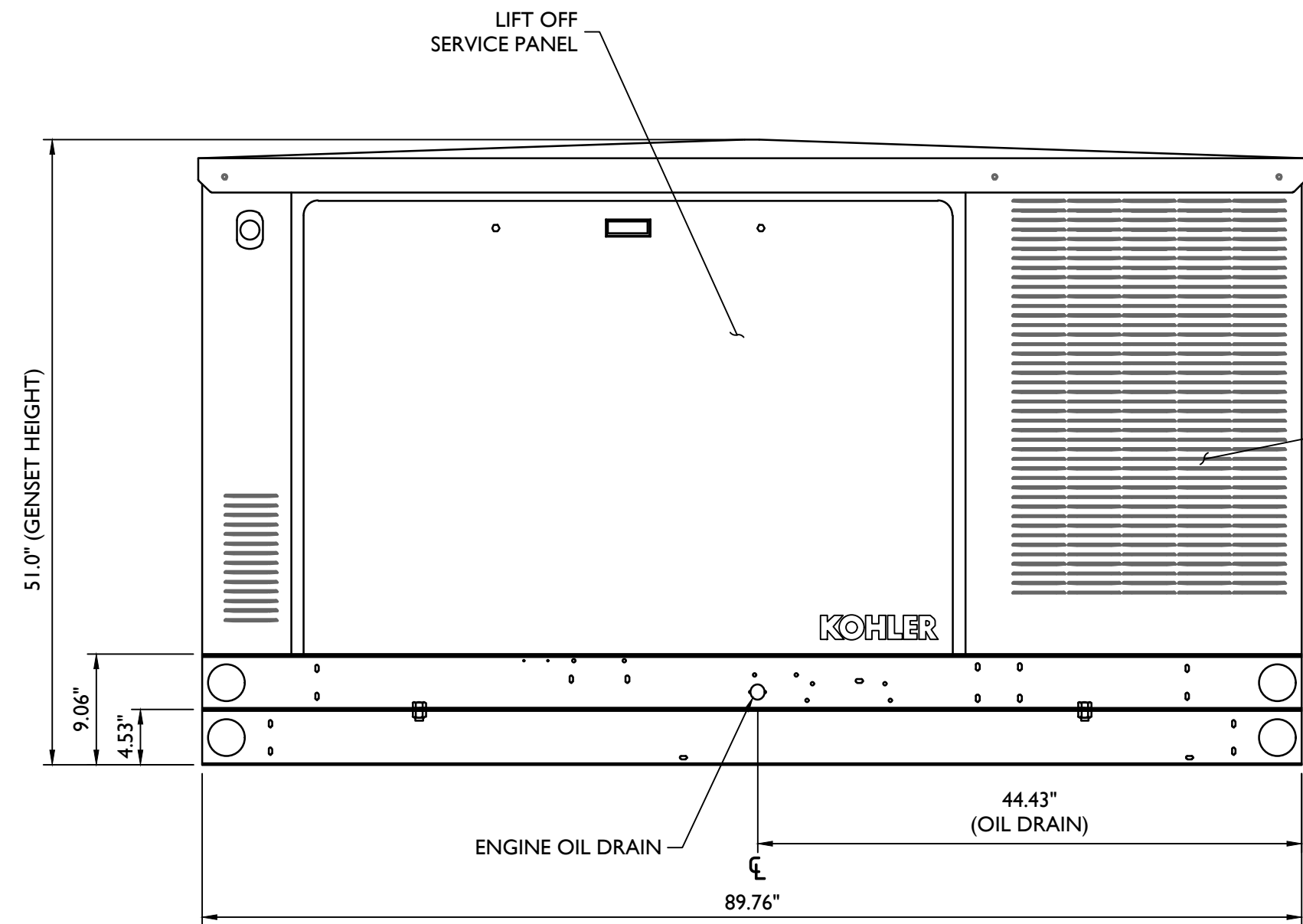


PLAN VIEW

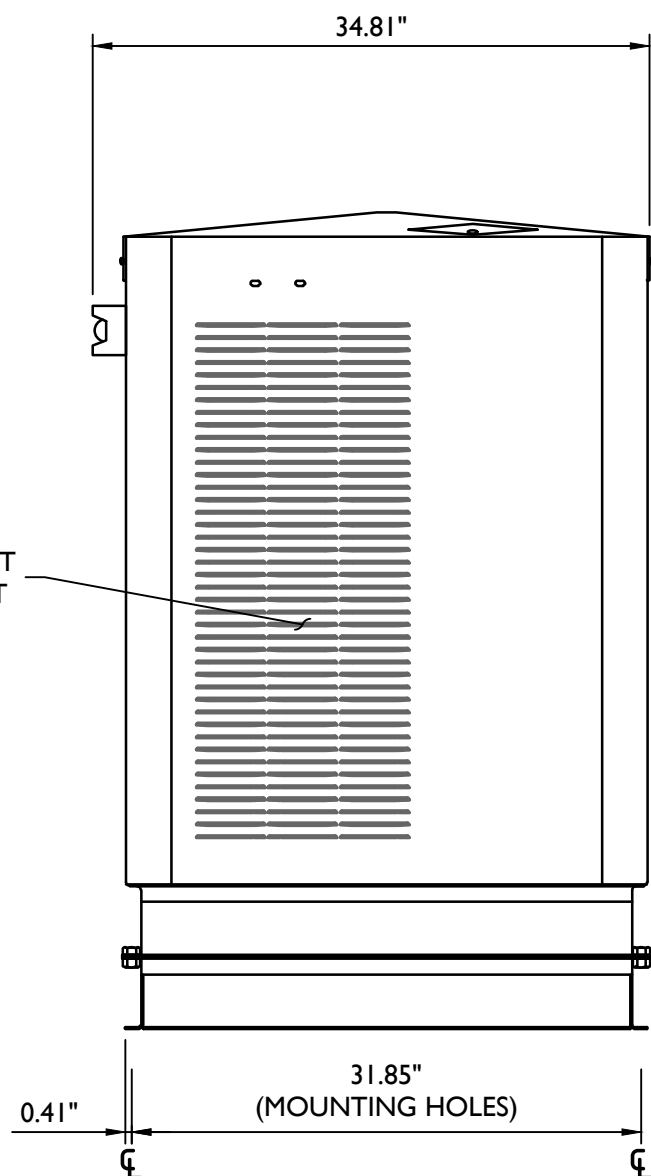
MODEL	ALTERNATOR	GENSET MAXIMUM WEIGHT
25/30CCL	4D/E	1,600 LBS
25/30CCL	4P/Q	1,630 LBS

NOTES:

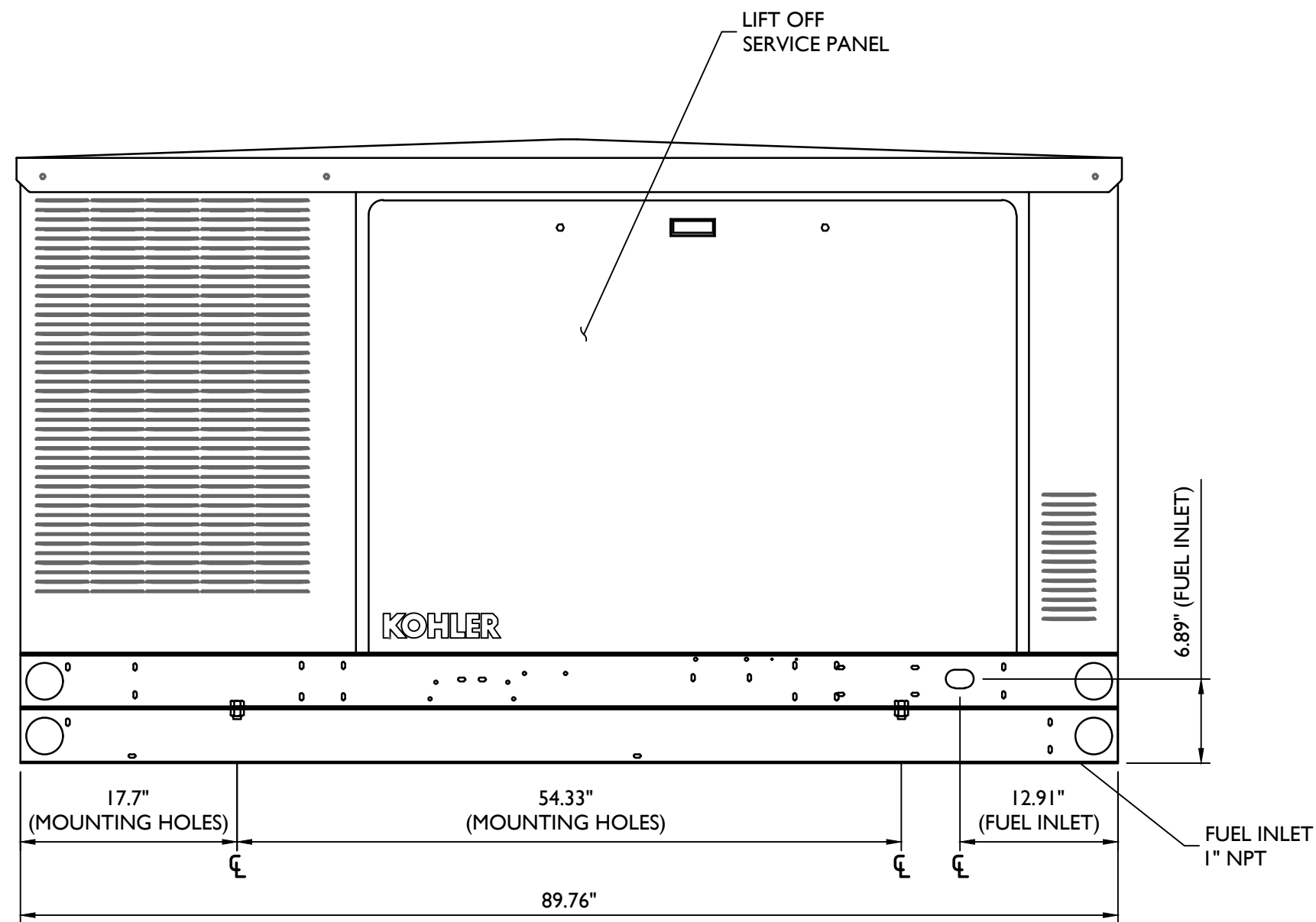
1. BOTH SIDES OF THE GENERATOR IS SERVICE ACCESSIBLE WITH EASY ACCESS SERVICE PANELS.
2. 10 AMP BATTERY CHARGER.
3. 120VAC ENGINE BLOCK HEATER.
4. GENERATOR MUST BE GROUNDED.
5. SOUND ATTENUATED ENCLOSURE STANDARD WITH GENERATOR.
6. MUST ALLOW FREE FLOW OF DISCHARGE AIR AND EXHAUST.
7. MUST ALLOW FREE FLOW OF AIR INTAKE.
8. IT IS THE RESPONSIBILITY OF THE INSTALLATION TECHNICIAN TO ENSURE THAT THE GENERATOR INSTALLATION COMPLIES WITH ALL APPLICABLE CODES, STANDARDS AND REGULATIONS.
9. SPRING ISOLATORS TO BE UTILIZED: MODEL MS-2E.
10. GENERATOR TO BE ANCHORED WITH 1 1/16"Ø A325 BOLTS. INSTALLED AND SIZE PER KOHLER RECOMMENDATIONS.
11. GENERATOR SOUND LEVEL IS 67.7 dBA @ 23 FT (7 METERS) WITH SOUND ENCLOSURE.



LEFT SIDE VIEW



FRONT VIEW



RIGHT SIDE VIEW

KOHLER PROPANE GAS
GENERATOR DETAIL
NOT TO SCALE



Engineering
& Design

www.colliersengineering.com

Copyright © 2023, Colliers Engineering & Design All Rights Reserved. This drawing and all the information contained herein is authorized for use only by the party for whom the services were contracted or to whom it is certified. This drawing may not be copied, reused, disclosed, distributed or relied upon for any other purpose without the express written consent of Colliers Engineering & Design.

Doing Business as



verizon

CELLCO PARTNERSHIP d/b/a
VERIZON WIRELESS

512 TOWNSHIP LINE ROAD
BUILDING 2, FLOOR 3
BLUE BELL, PA 19422



Know what's below.
Call before you dig.

PROTECT YOURSELF!
ALL STATES REQUIRE NOTIFICATION OF
EXCAVATORS, DESIGNERS, OR ANY PERSON
PREPARING TO DISTURB THE EARTH'S
SURFACE ANYWHERE IN ANY STATE

FOR STATE SPECIFIC DIRECT PHONE NUMBERS VISIT:
WWW.CALL811.COM

SCALE: AS SHOWN JOB NUMBER: 22960035A

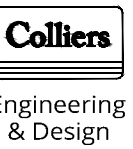
REV	DATE	DESCRIPTION	DRAWN BY	CHECKED BY
0	07/21/23	ISSUED FOR ZONING	MEG	MEG
A	04/11/23	ISSUED FOR REVIEW	FAC	MEG

Matthew E. Grainger
DELAWARE PROFESSIONAL ENGINEER
LICENSED IN THE STATE OF DELAWARE
COLLIERS ENGINEERING & DESIGN, INC.
D.E. C.07476, 2840

IT IS A VIOLATION OF LAW FOR ANY PERSON,
UNLESS THEY ARE ACTING UNDER THE DIRECTION
OF THE RESPONSIBLE LICENSED PROFESSIONAL
ENGINEER, TO ALTER THIS DOCUMENT.

SITE NAME:

DOV TIDEWATER
7 CLUBHOUSE DRIVE
OCEAN VIEW, DE 19970
SUSSEX COUNTY



Engineering
& Design

MT. LAUREL
2000 Midlantic Drive,
Suite 100
Mt. Laurel, NJ 08054
Phone: 856-797-0412
COLLIERS ENGINEERING & DESIGN, INC.
DOING BUSINESS AS MASER CONSULTING

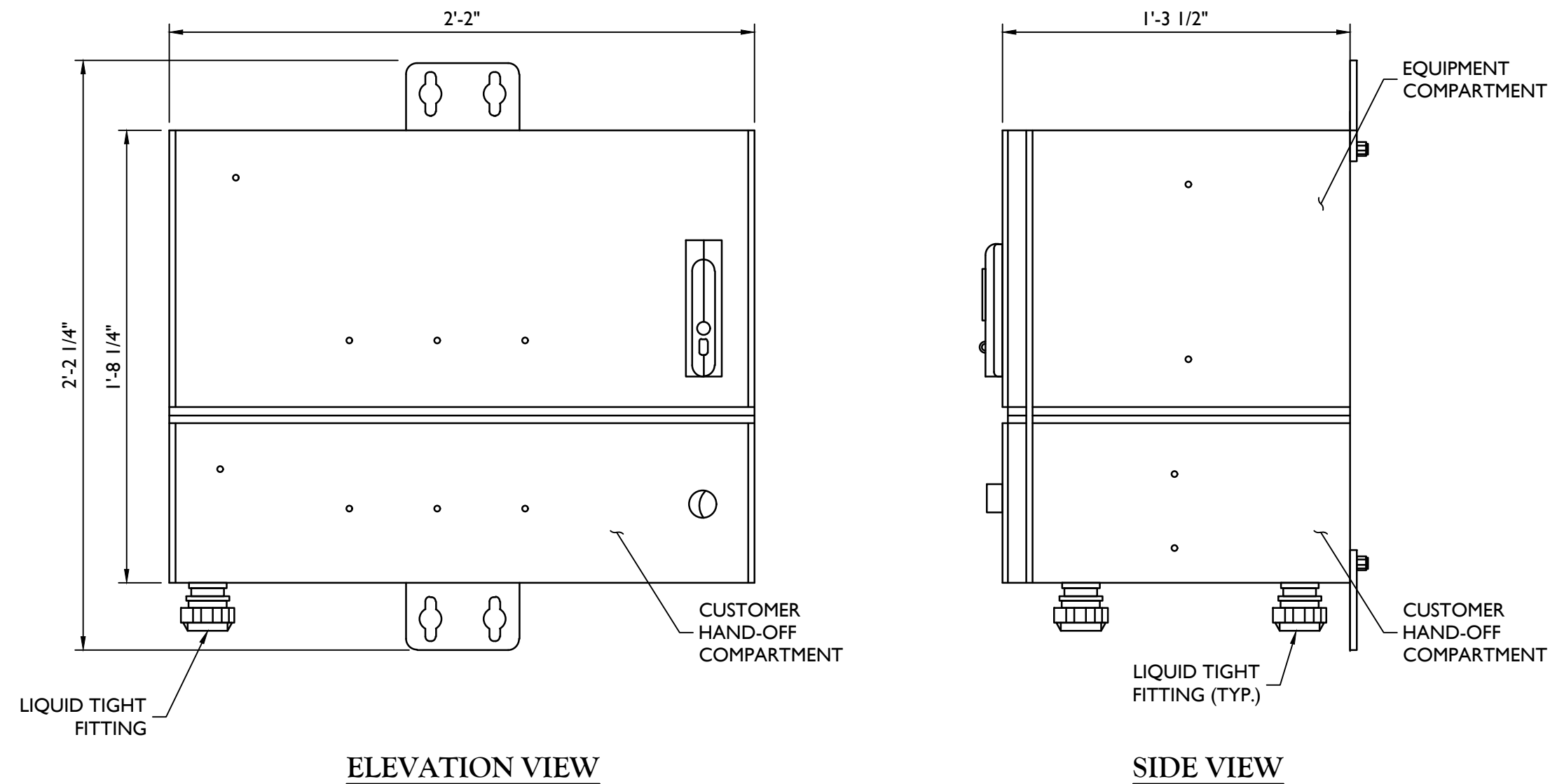
SHEET TITLE:

CONSTRUCTION DETAILS

SHEET NUMBER:

A-3

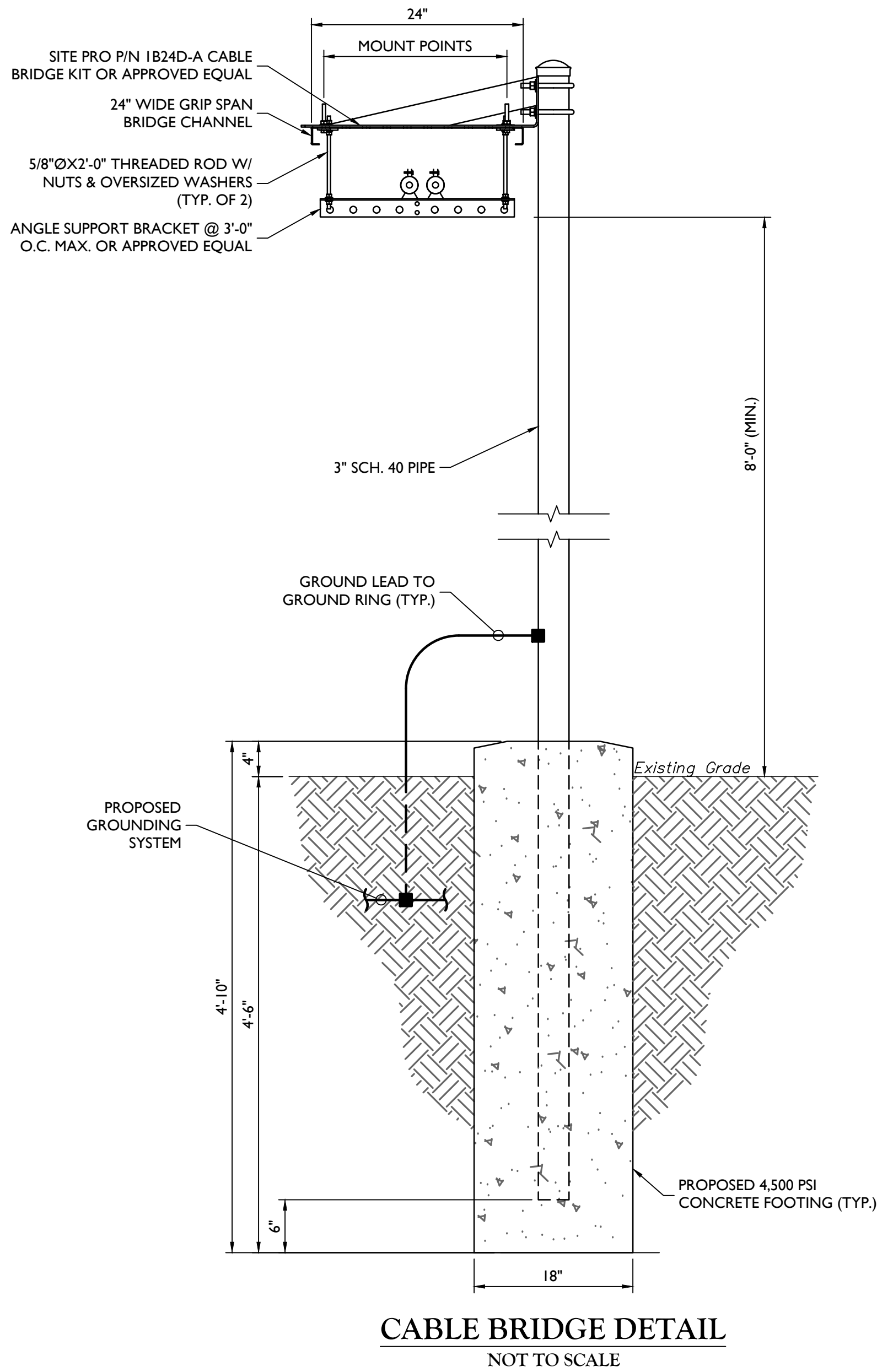
NOTE: DO NOT SCALE DRAWINGS FOR CONSTRUCTION.



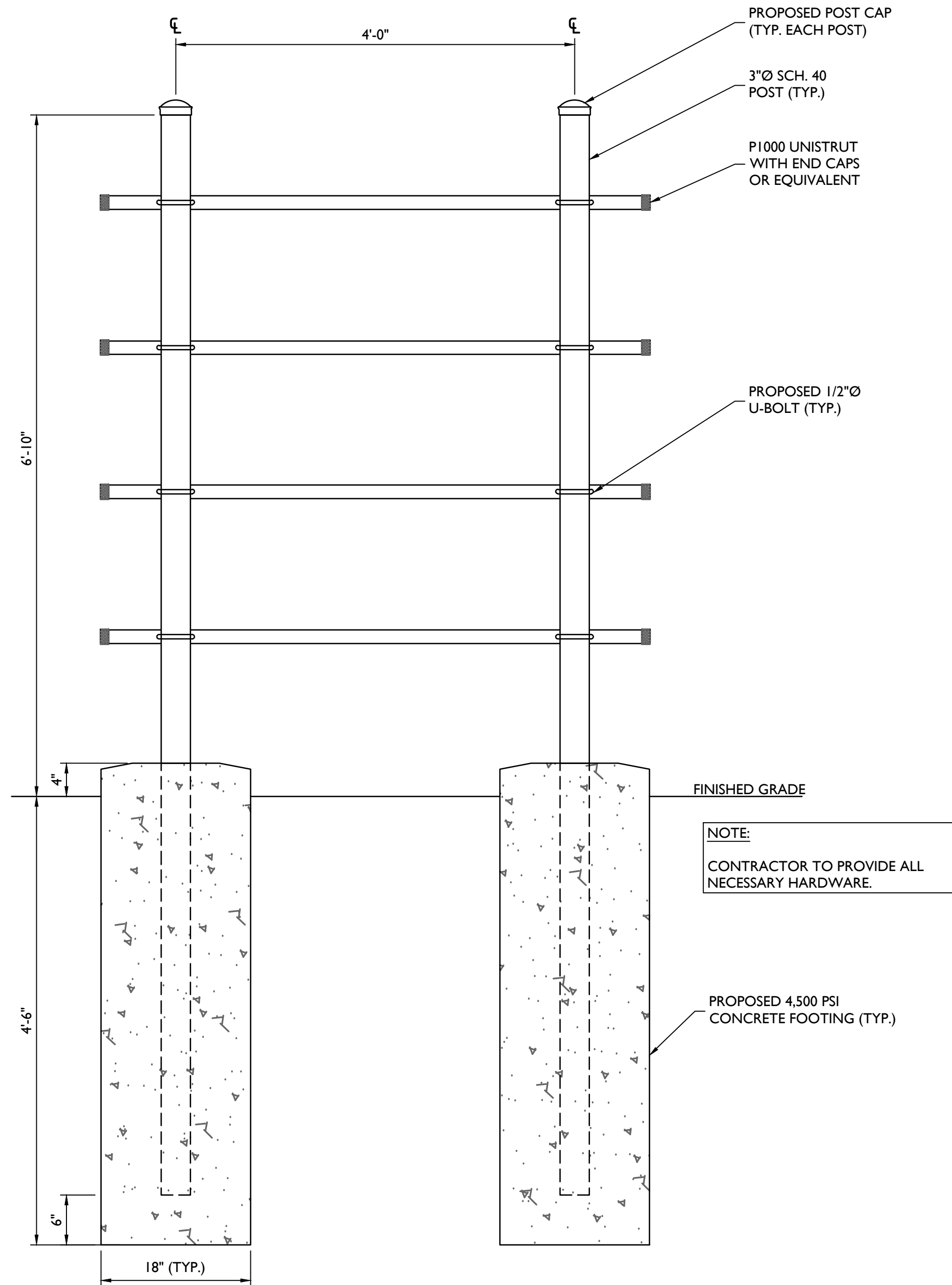
ELEVATION VIEW

SIDE VIEW

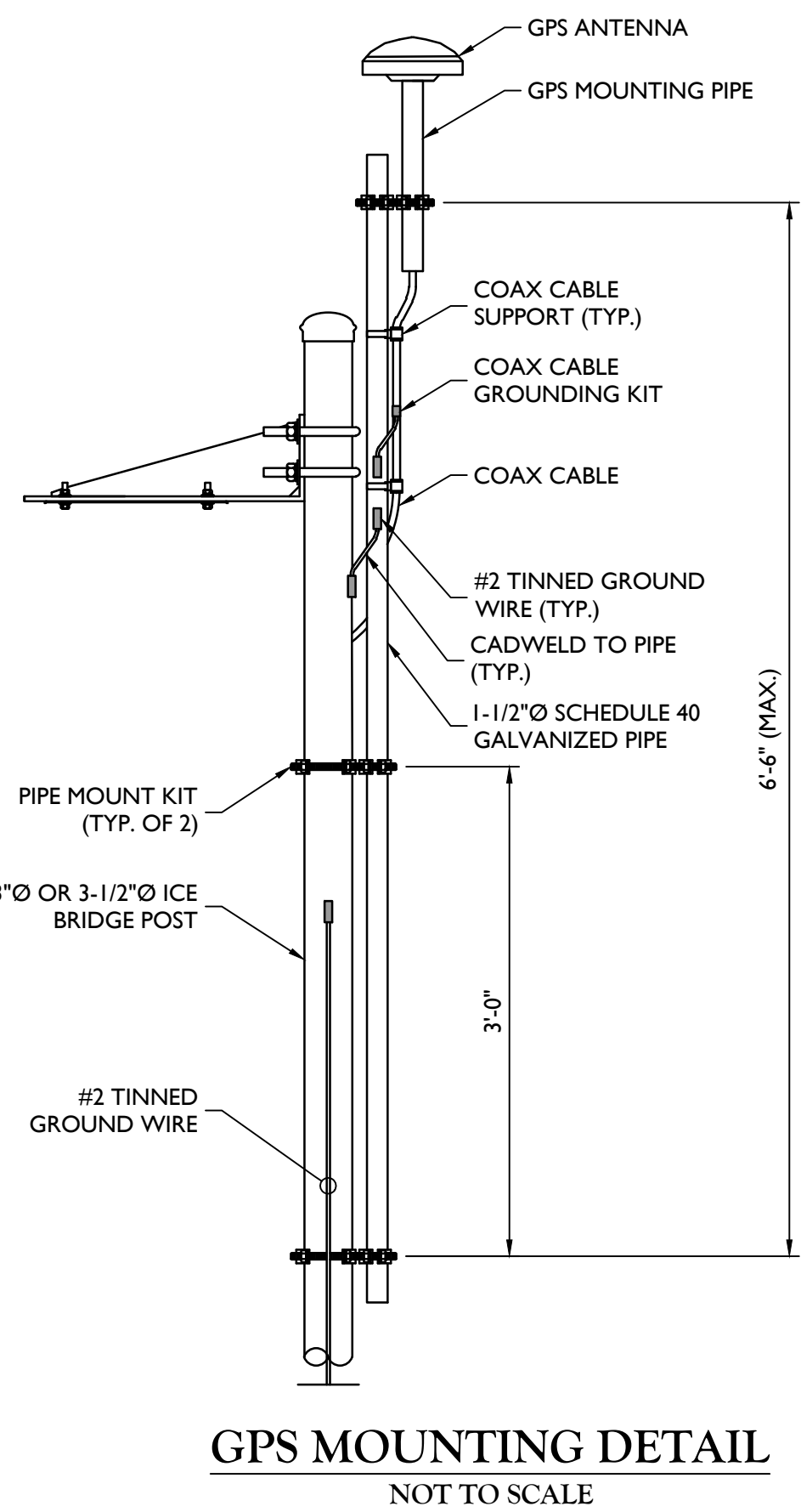
CHARLES INDUSTRIES RL2000A CUBE
NOT TO SCALE



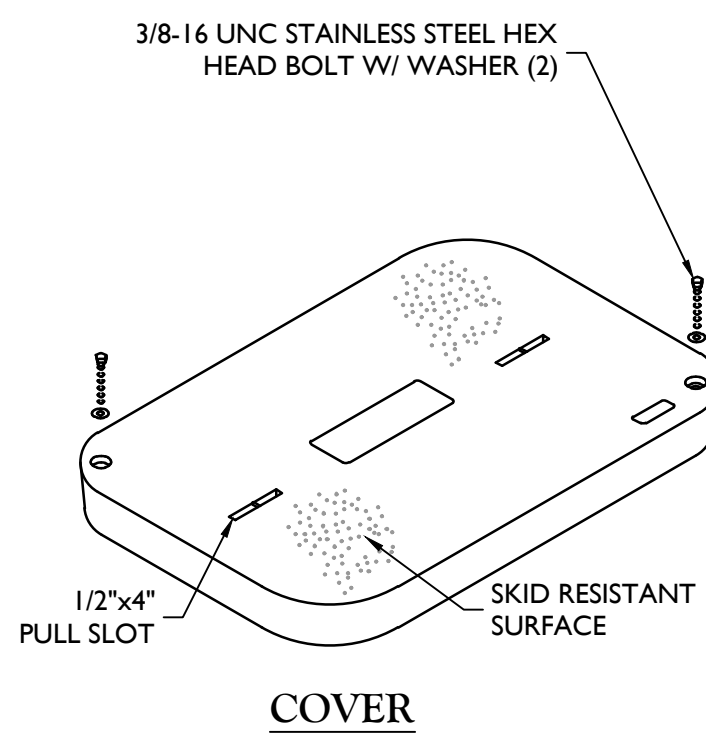
CABLE BRIDGE DETAIL
NOT TO SCALE



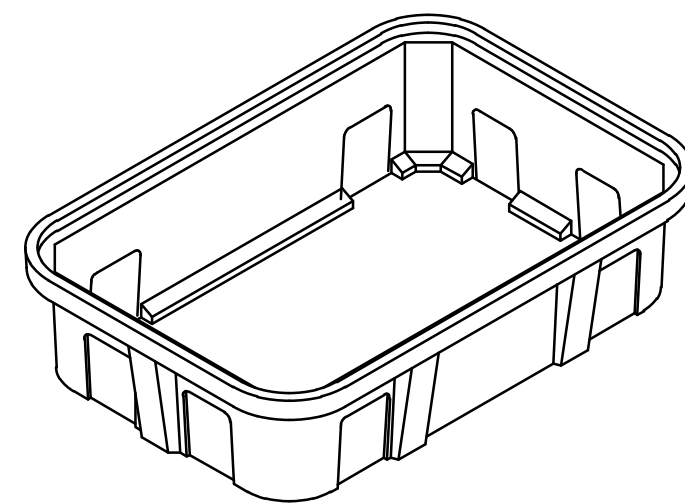
BACKBOARD DETAIL
NOT TO SCALE



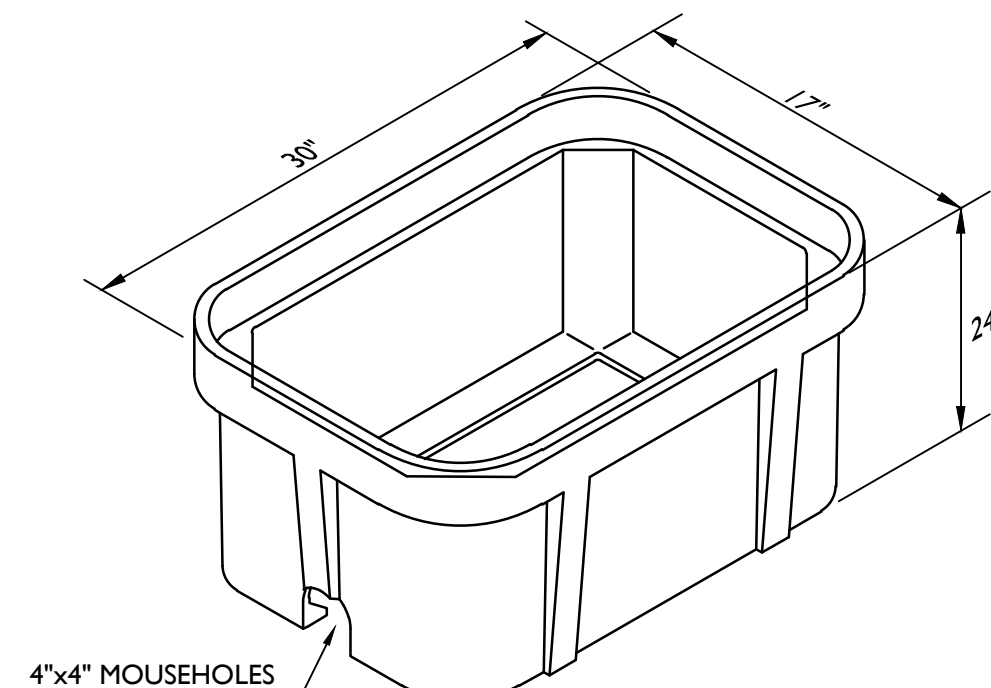
GPS MOUNTING DETAIL
NOT TO SCALE



COVER

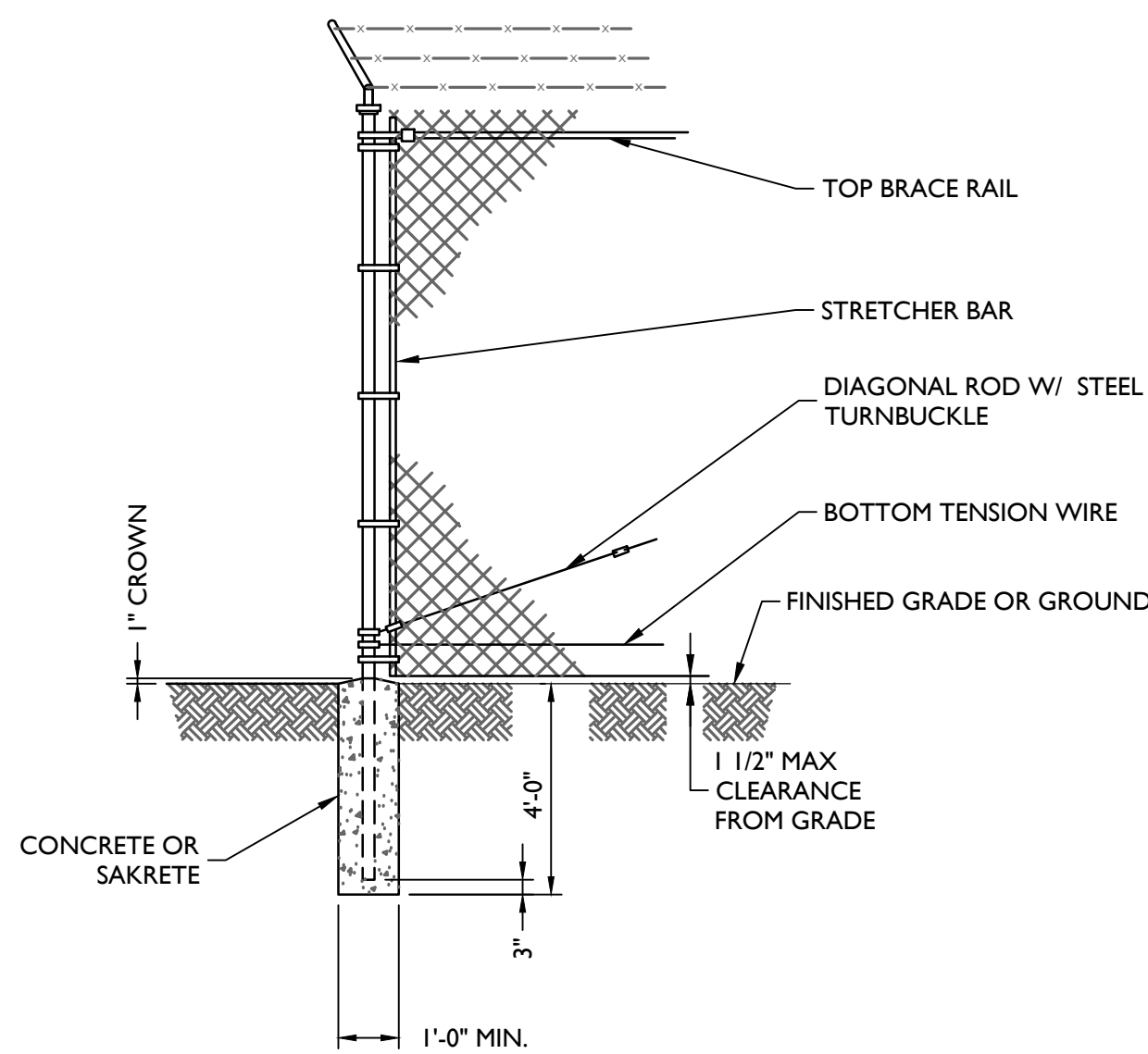


EXTENSION



BOX

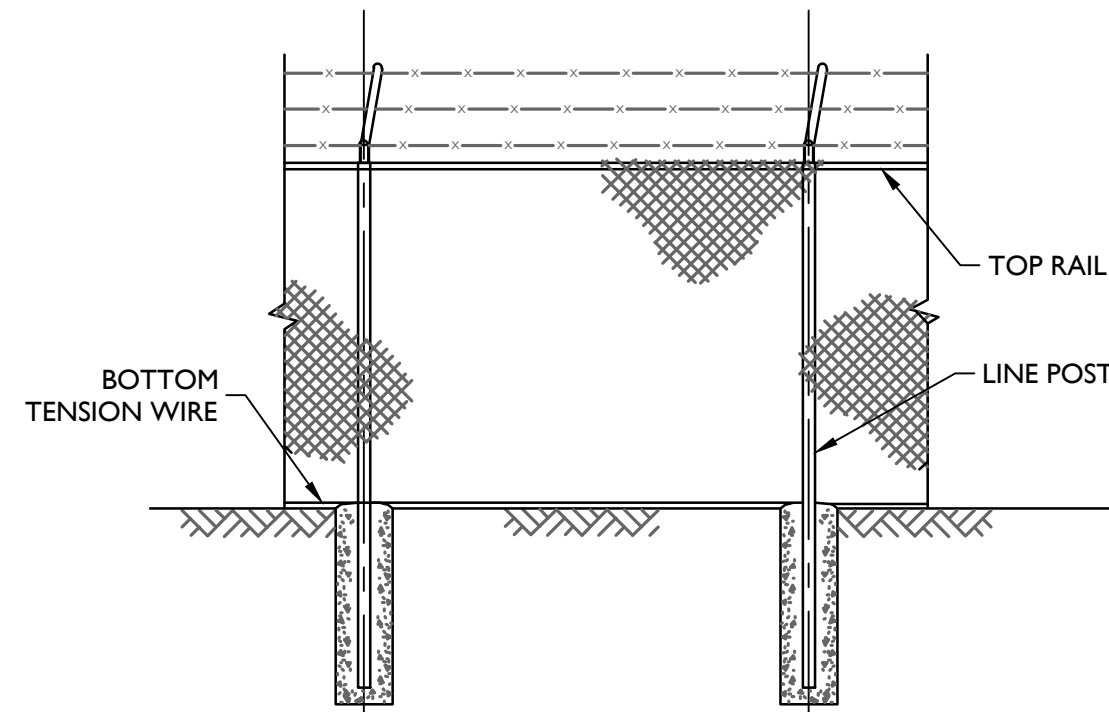
REV	DATE	DESCRIPTION	DRAWN BY	CHECKED BY
0	07/21/23	ISSUED FOR ZONING	MEG	MEG
A	04/11/23	ISSUED FOR REVIEW	FAC	MEG



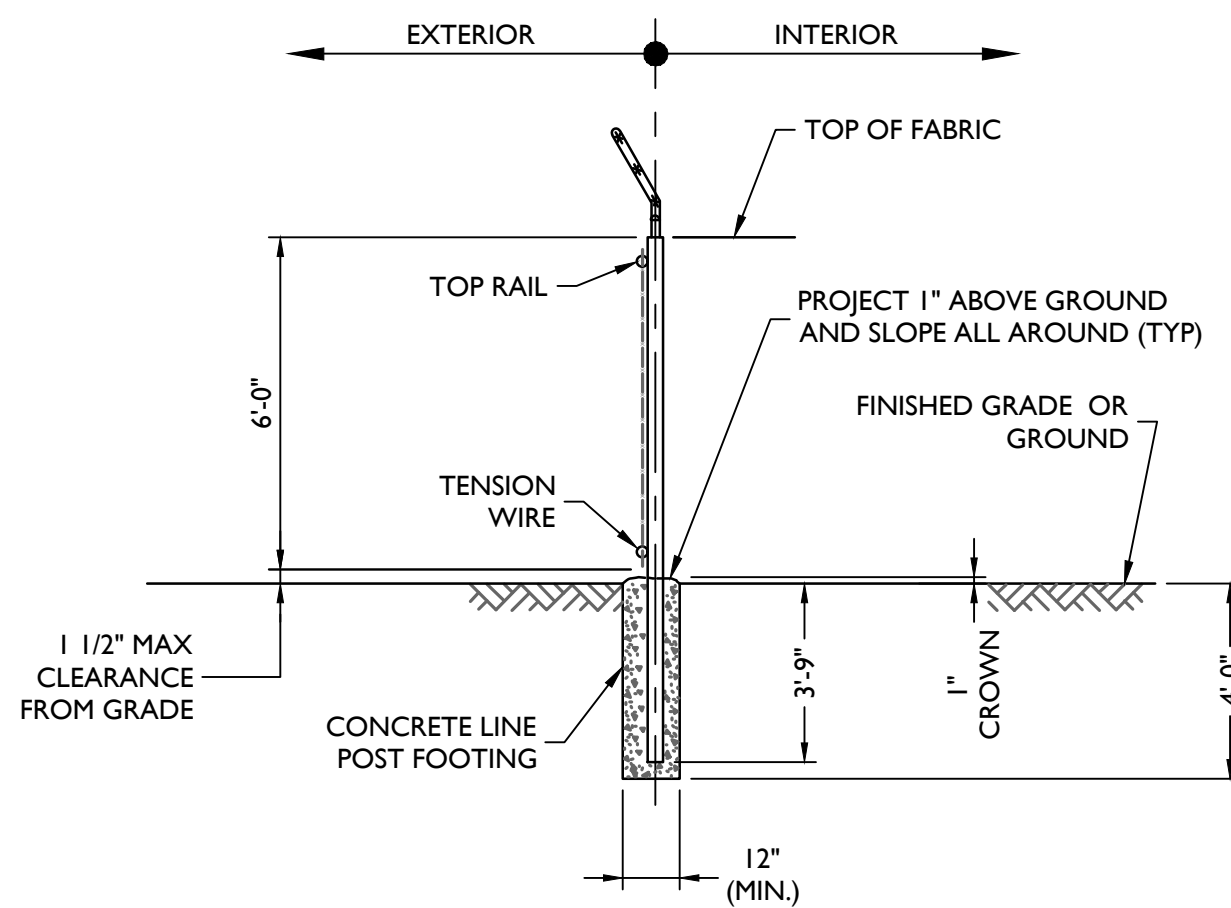
**WOVEN WIRE CORNER,
GATE, END, OR PULL POST**
NOT TO SCALE

FENCE NOTES:

1. GATE POST, CORNER, TERMINAL OR PULL POST SHALL BE 3"Ø SCHEDULE 40 FOR GATE WIDTHS UP THROUGH 7 FEET OR 14 FEET FOR DOUBLE SWING GATE PER ASTM-F1083.
2. LINE POST: 2-3/8"Ø SCHEDULE 40 PIPE PER ASTM-F1083.
3. GATE FRAME: 1 1/2"Ø SCHEDULE 40 PIPE PER ASTM-F1083.
4. TOP RAIL & BRACE RAIL: 1 1/4"Ø SCHEDULE 40 PIPE PER ASTM-F1083.
5. FABRIC: 9 GA. CORE WIRE SIZE 2" MESH, CONFORMING TO ASTM-A392 CLASS 1.
6. TIE WIRE: MINIMUM 11 GA GALVANIZED STEEL INSTALL A SINGLE WRAP TIE WIRE AT POSTS AND RAILS AT MAX. 24" INTERVALS. INSTALL HOG RINGS ON TENSION WIRE AT 24" INTERVALS.
7. TENSION WIRE: 7 GA. GALVANIZED STEEL.
8. BARBED WIRE: 3 STRANDS OF DOUBLE STRANDED 12-1/2 GAUGE TWISTED WIRE, 4 PT. BARBS SPACED ON APPROXIMATELY 5" CENTERS.
9. GATE LATCH: 1-3/8" O.D. PLUNGER ROD W/ MUSHROOM TYPE CATCH AND LOCK.
10. LOCAL ORDINANCE FOR BARBED WIRE PERMIT SHALL GOVERN INSTALLATION.
11. HEIGHT = 6'-0" VERTICAL DIMENSION WITH 1'-0" BARBED WIRE.
12. ALL WORK SHALL CONFORM WITH THE PROJECT SPECIFICATIONS.

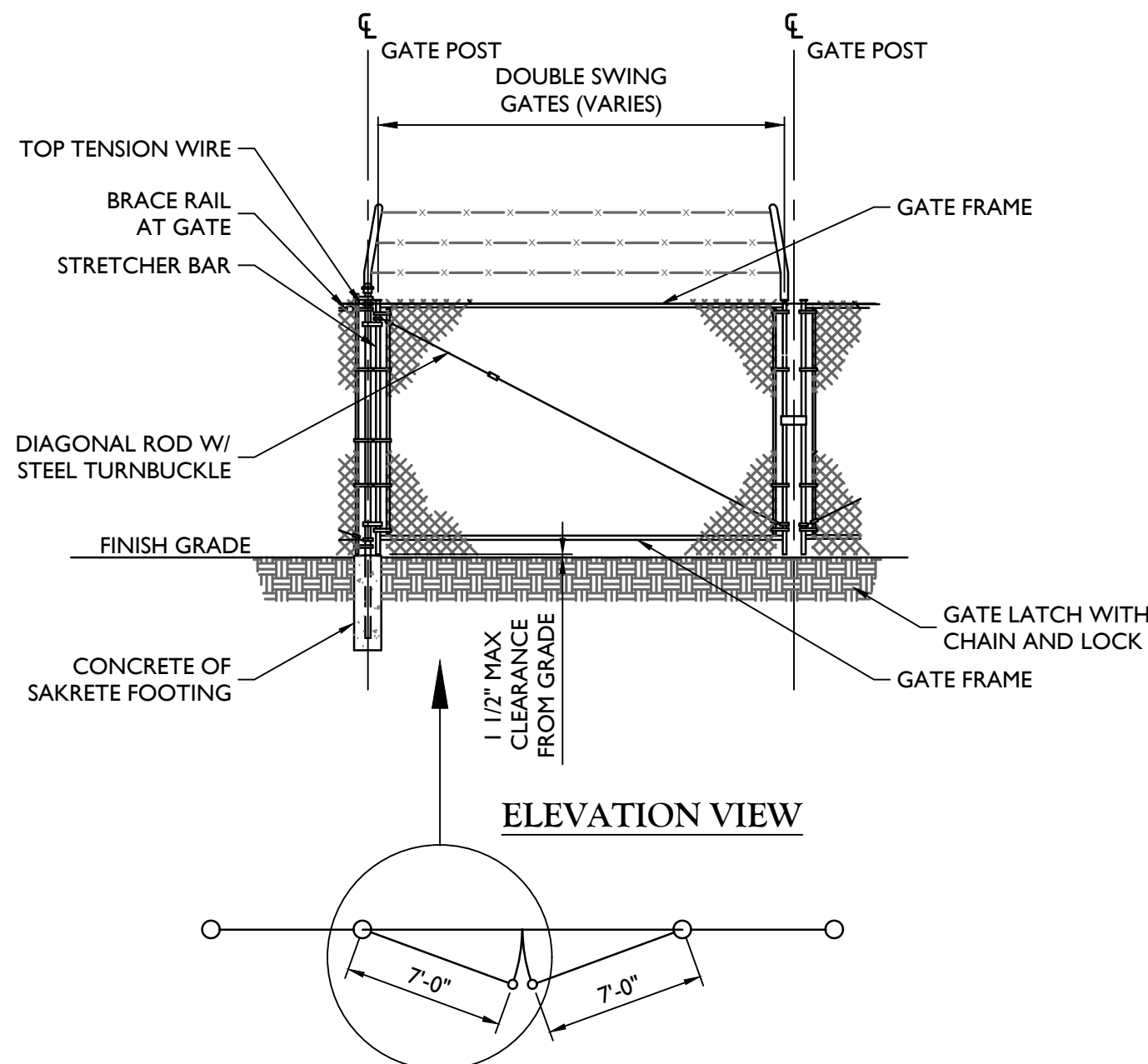


ELEVATION VIEW



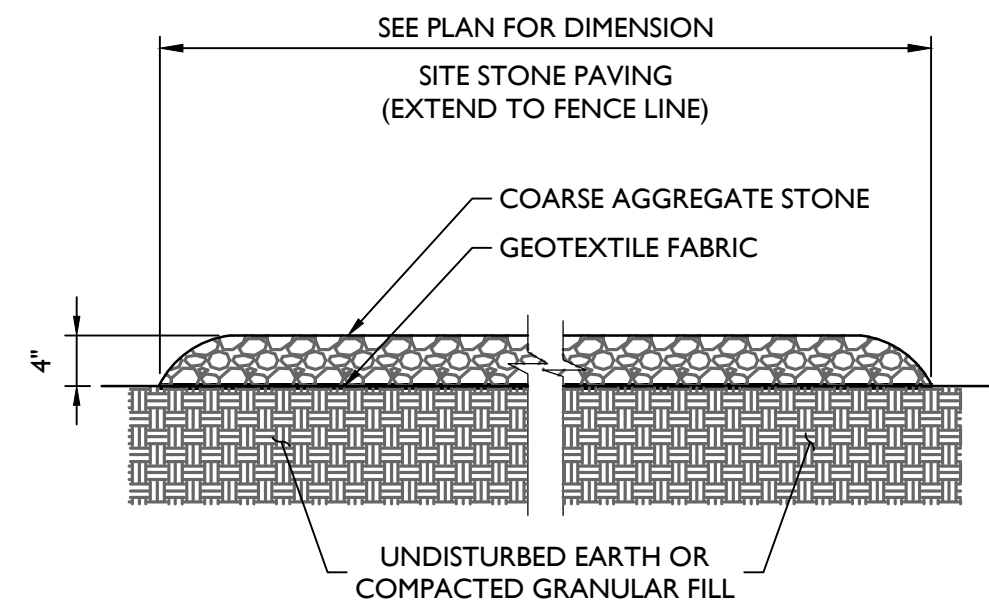
SECTION VIEW

WOVEN WIRE FENCE DETAIL
NOT TO SCALE

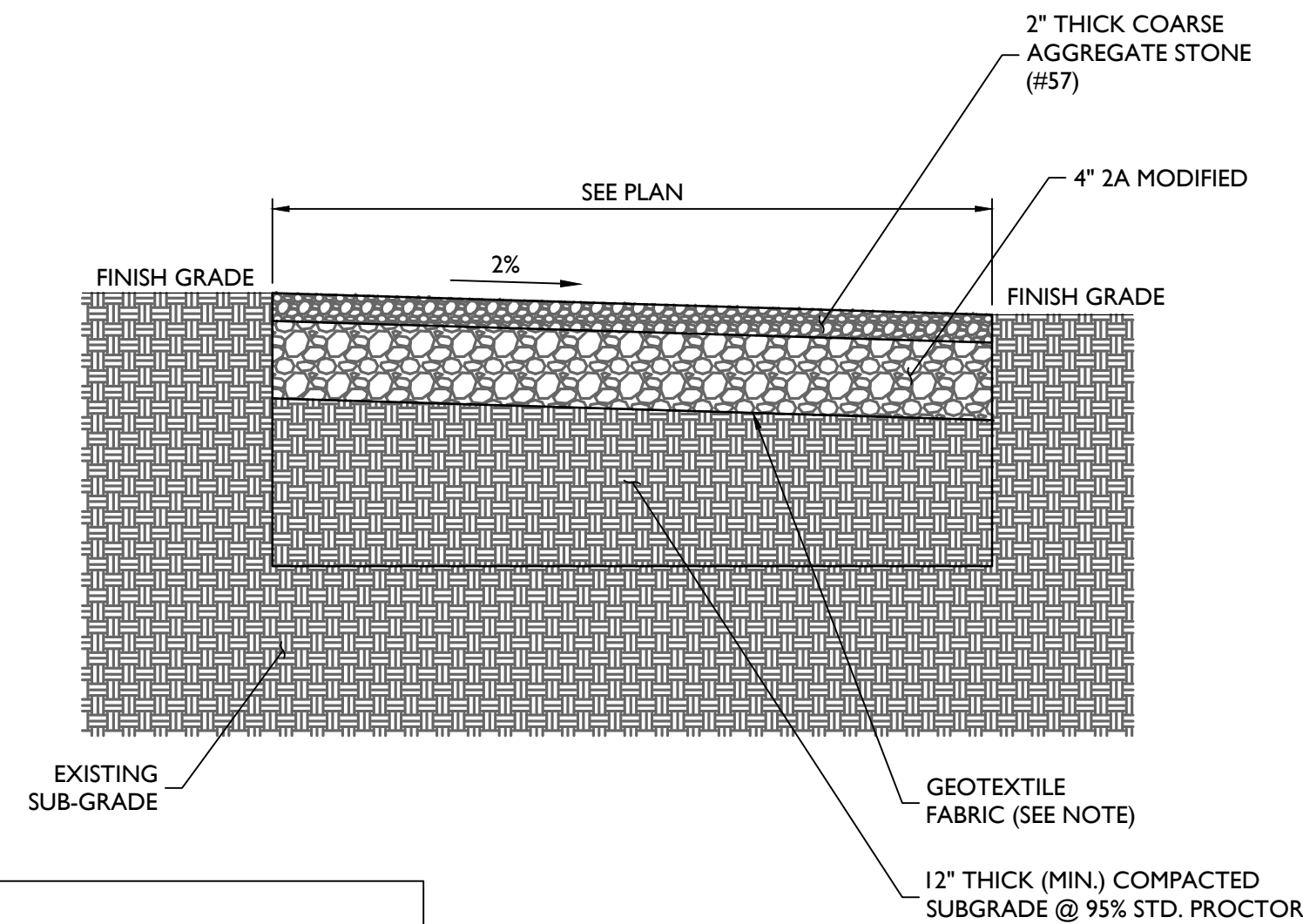


PLAN VIEW

WOVEN WIRE SWING GATE, DOUBLE
NOT TO SCALE



GRAVEL SURFACING
NOT TO SCALE



NOTE:
GEOTEXTILE FABRIC IS TO BE MIRAFI 500X
WOVEN WIRE FABRIC OR APPROVED EQUAL.

GRAVEL DRIVEWAY SURFACING
NOT TO SCALE

Colliers Engineering
& Design

www.colliersengineering.com

Copyright © 2023, Colliers Engineering & Design All Rights Reserved. This drawing and all the information contained herein is authorized for use only by the party for whom the services were rendered or to whom it is certified. This drawing may not be copied, reused, disclosed, altered or relied upon for any other purpose without the express written consent of Colliers Engineering & Design.

Doing Business as **MASER** CONSULTING

verizon

CELLCO PARTNERSHIP d/b/a
VERIZON WIRELESS

512 TOWNSHIP LINE ROAD
BUILDING 2, FLOOR 3
BLUE BELL, PA 19422

811 PROTECT YOURSELF!
ALL STATES REQUIRE NOTIFICATION OF
EXCAVATORS, DESIGNERS, OR ANY PERSON
PREPARING TO DISTURB THE EARTH'S
SURFACE ANYWHERE IN ANY STATE
Know what's below.
Call before you dig.
FOR STATE SPECIFIC DIRECT PHONE NUMBERS VISIT:
WWW.CALL811.COM

SCALE: AS SHOWN JOB NUMBER: 22960035A

REV	DATE	DESCRIPTION	DRAWN BY	CHECKED BY
0	07/21/23	ISSUED FOR ZONING	MEG	MEG
A	04/11/23	ISSUED FOR REVIEW	FAC	MEG

Matthew E. Graubart
DELAWARE PROFESSIONAL ENGINEER
LICENSED PROFESSIONAL ENGINEER
COLLIERS ENGINEERING & DESIGN, INC.
D.E. C.004111, 2840

IT IS A VIOLATION OF LAW FOR ANY PERSON,
UNLESS THEY ARE ACTING UNDER THE DIRECTION
OF THE RESPONSIBLE LICENSED PROFESSIONAL
ENGINEER, TO ALTER THIS DOCUMENT.

SITE NAME:

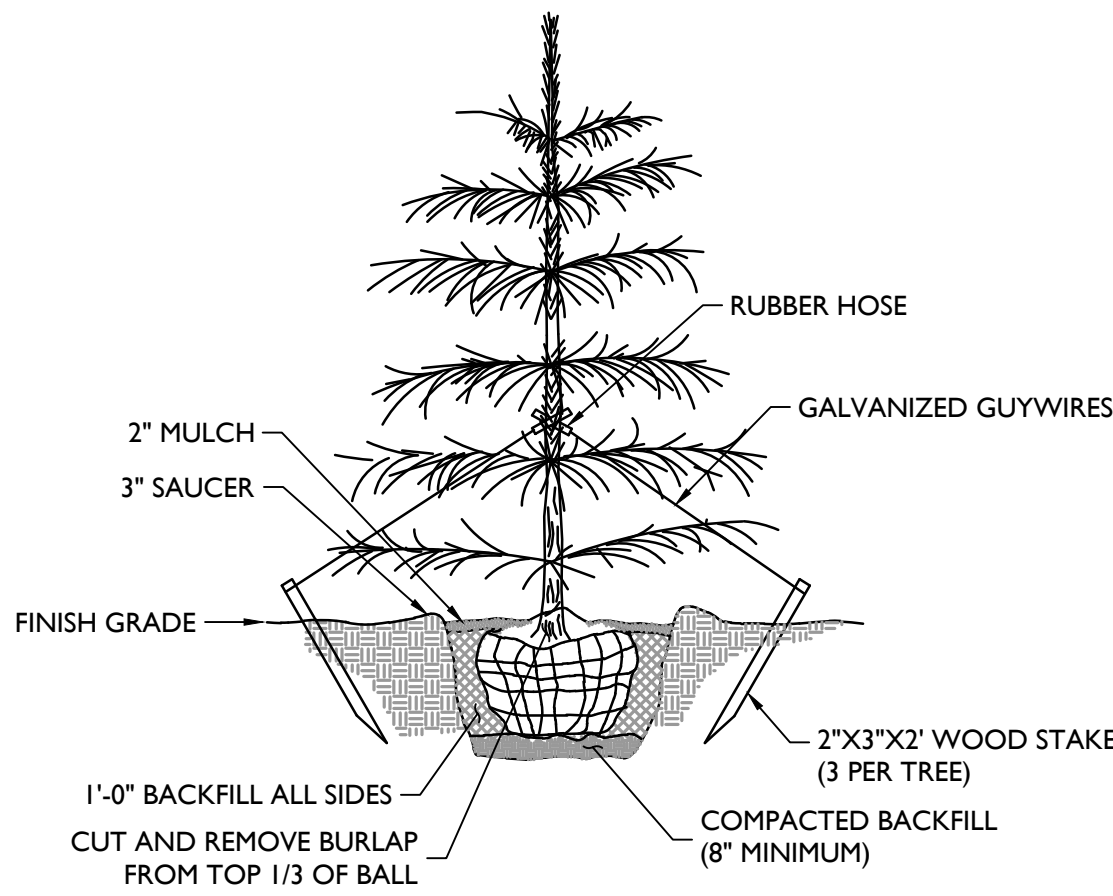
DOV TIDEWATER
7 CLUBHOUSE DRIVE
OCEAN VIEW, DE 19970
SUSSEX COUNTY

Colliers Engineering
& Design
MT. LAUREL
2000 Midlantic Drive,
Suite 100
Mt. Laurel, NJ 08054
Phone: 856-797-0412
COLLIERS ENGINEERING & DESIGN, INC.
DOING BUSINESS AS MASER CONSULTING

SHEET TITLE:
CONSTRUCTION DETAILS

SHEET NUMBER:
A-5

NOTE: DO NOT SCALE DRAWINGS FOR CONSTRUCTION.

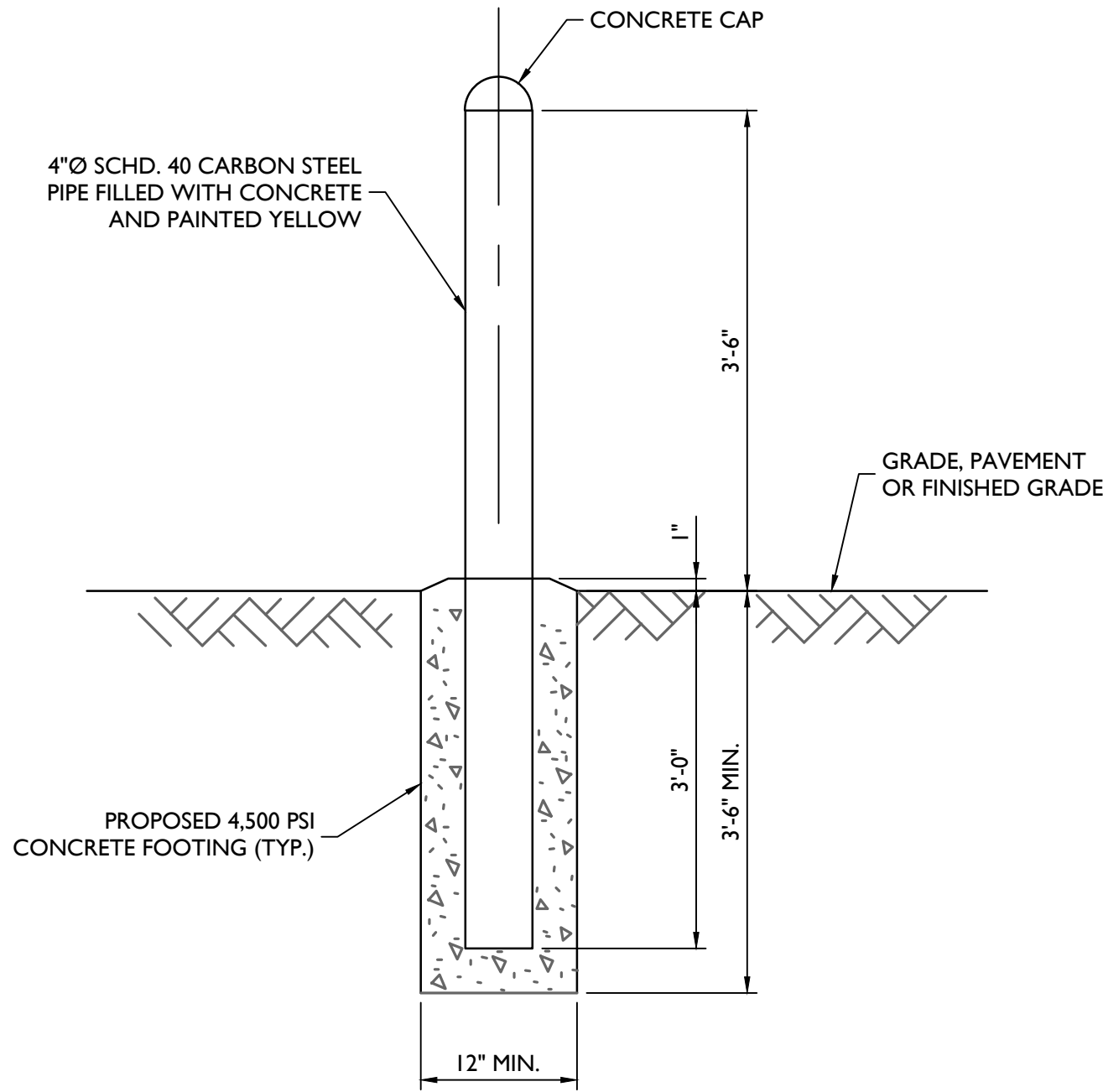


SCIENTIFIC NAME	COMMON NAME	PLANTING HEIGHT	SPACING	CALIPER	TYPE	TOTAL NUMBER
THUJA OCCIDENTALIS	AMERICAN ARBORVITAE	6'	5' O.C.	N/A	B&B	40

LANDSCAPE MAINTENANCE NOTES:

- REFER TO THE ENGINEERING PLANS FOR ADDITIONAL INFORMATION REGARDING THE SITE DEVELOPMENT.
- CONTRACTOR TO REMOVE ANY EXISTING TREE OR SHRUB FROM THE PROPOSED COMPOUND.
- ALL PLANT MATERIAL SHALL CONFORM TO ALL LOCAL LAND DEVELOPMENT REGULATIONS AND ORDINANCES.
- ALL LANDSCAPE PLANTING AREAS SHALL BE MULCHED WITH 4" MINIMUM DEPTH OF SHREDDED HARDWOOD MULCH, EXCEPT TURF AREAS.
- ALL TREES AND SHRUBS SHALL BE GUARANTEED FOR A PERIOD OF 18 MONTHS FROM THE DATE OF PLANTING.
- ALL PLANTING OPERATIONS SHALL BE DONE IN THE APPROPRIATE WEATHER AFTER FINAL GRADING HAS OCCURRED. B&B MATERIAL MAY BE PLANTED AT ANY TIME WHEN THE SOIL AND BACKFILL ARE NOT FROZEN OR IN AN UNSUITABLE CONDITION. OTHER KINDS OF PLANTS SHALL BE PLANTED AT TIMES OF THE YEAR DICTATED BY GOOD HORTICULTURAL PRACTICES AND AVAILABILITY OF PLANT MATERIAL.
- NEWLY INSTALLED TREES AND SHRUBS SHALL BE IRRIGATED WEEKLY FOR THE FIRST GROWING SEASON.
- IN THE EVENT OF ANY DISCREPANCIES WITH THIS PLAN, THE LANDSCAPE CONTRACTOR SHALL NOTIFY THE LANDSCAPE ARCHITECT IMMEDIATELY FOR REVIEW AND RESOLUTION.
- BACKFILL MATERIAL FOR PLANTING AREAS SHALL BE COMPOSED OF 80% TOPSOIL AMENDED WITH 10% PEAT MOSS AND 10% FULLY COMPOSTED HORSE OR COW MANURE.
- THE QUALITY AND SIZE OF PLANT MATERIAL, SPREAD OF THE ROOTS AND THE SIZE OF THE ROOT BALL SHALL BE IN ACCORDANCE WITH "AMERICAN STANDARDS FOR NURSERY STOCK" AS PUBLISHED BY THE AMERICAN ASSOCIATION OF NURSERYMEN, INC.
- ALL PLANTS SHALL BE TYPICAL OF THEIR SPECIES OR VARIETY. THEY SHALL HAVE NORMAL, WELL-DEVELOPED BRANCHES AND VIGOROUS FIBROUS ROOT SYSTEMS. ALL PLANTS SHALL BE NURSERY-GROWN, UNLESS OTHERWISE STATED. ALL PLANTS WHICH ARE FOUND UNSUITABLE IN GROWTH OR CONDITION, OR WHICH ARE NOT TRUE TO NAME, SHALL BE REMOVED AND REPLACED WITH ACCEPTABLE PLANTS.
- PLANTS SHALL BE MEASURED AS THEY STAND IN THEIR NATURAL POSITION. STOCK FURNISHED SHALL BE A FAIR AVERAGE OF THE MINIMUM SIZES SPECIFIED OR OF THE RANGE GIVEN IN THE U.S.D.A STANDARDS FOR NURSERY STOCK. LARGER PLANTS CUT BACK TO SIZES SPECIFIED SHALL NOT BE ACCEPTED.
- ALL PRECAUTIONS CUSTOMARY IN GOOD TRADE PRACTICES SHALL BE TAKEN IN PREPARING PLANTS FOR MOVING. ALL BALLED AND BURLAPPED PLANTS SHALL BE DUG TO MEET OR EXCEED U.S.D.A. STANDARDS FOR NURSERY STOCK.
- PLANTS SHALL BE PACKED, TRANSPORTED AND HANDLED WITH UTMOST CARE TO ENSURE ADEQUATE PROTECTION AGAINST INJURY. EACH SHIPMENT SHALL BE CERTIFIED BY STATE AND FEDERAL AUTHORITIES TO BE FREE FROM DISEASES AND INFESTATION.
- IN ORDER TO ACHIEVE THE EFFECT ESTABLISHED IN THE PLANTING PLAN, UNIFORMITY OF PLANT MATERIAL IS DESIRED. THE PLANT MATERIAL SHALL BE OF THE SAME SIZE, AGE AND CULTIVAR, AND SHALL HAVE BEEN OBTAINED FROM THE SAME NURSERY.

EVERGREEN TREE PLANTING DETAIL
NOT TO SCALE



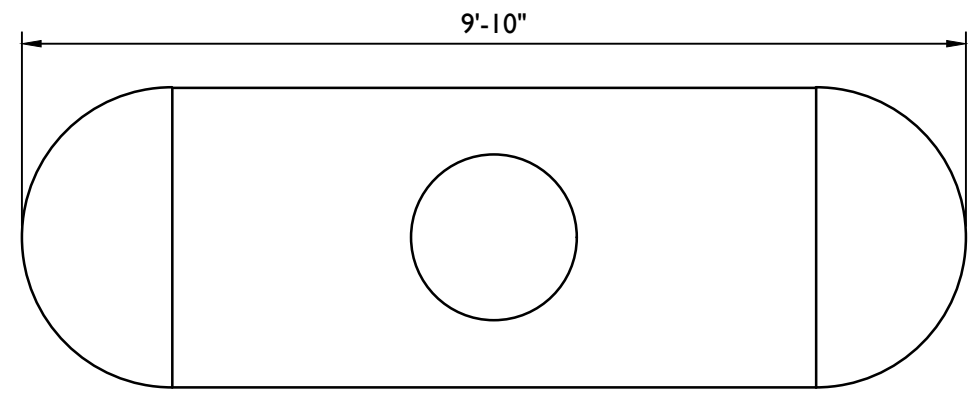
BOLLARD DETAIL
NOT TO SCALE



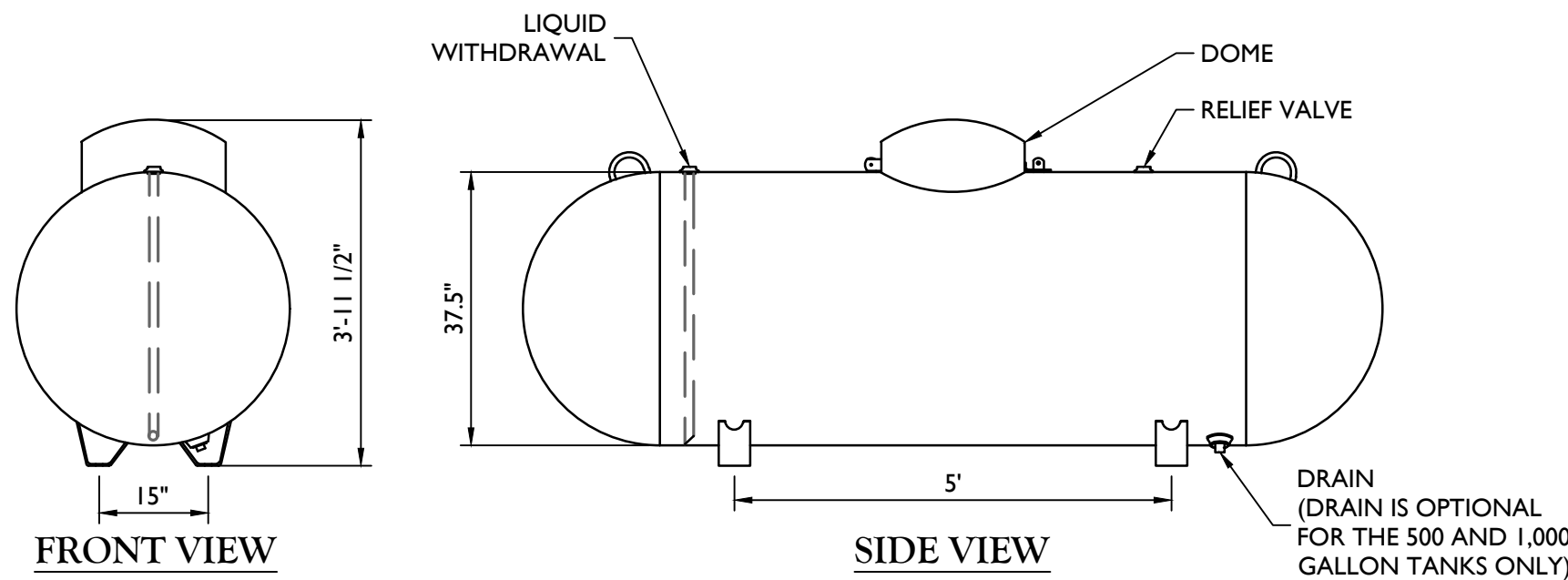
ABOVEGROUND
PROPANE STORAGE TANKS
120 - 1000 Gallons

ABOVEGROUND VESSEL DIMENSIONS & SPECIFICATIONS
(All Vessel Dimensions are Approximate)

Part Number	Description	Water Capacity Gal/l	Outside Diameter In/mm	Head Type	Overall Length In/mm	Overall Height In/mm	Leg Width In/mm	Leg Spacing In/mm	Weight Lbs/kg	Full Load	Quantity Per Stack
68268**	120 Gallon Aboveground Storage Tank	120 454.2	24" 609.6	Ellip	5' 8" 1727.2	2' 10 1/4" 870	10 1/8" 257.2	3' 0" 914.4	310 140.6	96	12
68270**	250 Gallon Aboveground Storage Tank	250 946.3	30" 762	Hemi	7' 10" 2387.6	3' 4 3/16" 1020.8	12 3/4" 323.9	3' 6" 1066.8	471 213.6	54	9
68272**	320 Gallon Aboveground Storage Tank	320 1211.3	30" 762.0	Hemi	9' 7" 2921	3' 4 3/16" 1020.8	12 3/4" 323.9	4' 0 1/4" 1225.6	566 256.7	45	9
68274** 68303*	500 Gallon Aboveground Storage Tank	500 1892.7	37.5" 952.5	Hemi	9' 10" 2997.2	3' 11 1/2" 1206.5	15" 381	5' 0" 1524	920 417.3	30	6
68276** 68304*	1000 Gallon Aboveground Storage Tank	1000 3785.4	41" 1041.4	Hemi	15' 11" 4851.4	4' 2 15/16" 1293.8	16 1/4" 412.8	9' 0" 2743.2	1737 787.9	15	5



PLAN VIEW



WEIGHT = 920 LBS

MANCHESTER PROPANE TANK 500 GALLON
ABOVEGROUND STORAGE DETAIL
NOT TO SCALE



Engineering
& Design

www.colliersengineering.com

Copyright © 2023, Colliers Engineering & Design All Rights Reserved. This drawing and all the information contained herein is authorized for use only by the party for whom the services were contracted or to whom it is certified. This drawing may not be copied, reused, disclosed, distributed or relied upon for any other purpose without the express written consent of Colliers Engineering & Design.

Doing Business as



verizon

CELLCO PARTNERSHIP d/b/a
VERIZON WIRELESS

512 TOWNSHIP LINE ROAD
BUILDING 2, FLOOR 3
BLUE BELL, PA 19422



Know what's below.
Call before you dig.

PROTECT YOURSELF
ALL STATES REQUIRE NOTIFICATION OF
EXCAVATORS, DESIGNERS, OR ANY PERSON
PREPARING TO DISTURB THE EARTH'S
SURFACE ANYWHERE IN ANY STATE

FOR STATE SPECIFIC DIRECT PHONE NUMBERS VISIT:
WWW.CALL811.COM

SCALE: AS SHOWN JOB NUMBER: 22960035A

0	07/21/23	ISSUED FOR ZONING	MEG	MEG	
A	04/11/23	ISSUED FOR REVIEW	FAC	MEG	
REV	DATE	DESCRIPTION	DRAWN BY	CHECKED BY	

Matthew E. Grainger
DELAWARE PROFESSIONAL ENGINEER
LICENSED IN THE STATE OF DELAWARE
COLLIERS ENGINEERING & DESIGN, INC.
D.E. C.007419, 2840

IT IS A VIOLATION OF LAW FOR ANY PERSON,
UNLESS THEY ARE ACTING UNDER THE DIRECTION
OF THE RESPONSIBLE LICENSED PROFESSIONAL
ENGINEER, TO ALTER THIS DOCUMENT.

SITE NAME:

DOV TIDEWATER
7 CLUBHOUSE DRIVE
OCEAN VIEW, DE 19970
SUSSEX COUNTY

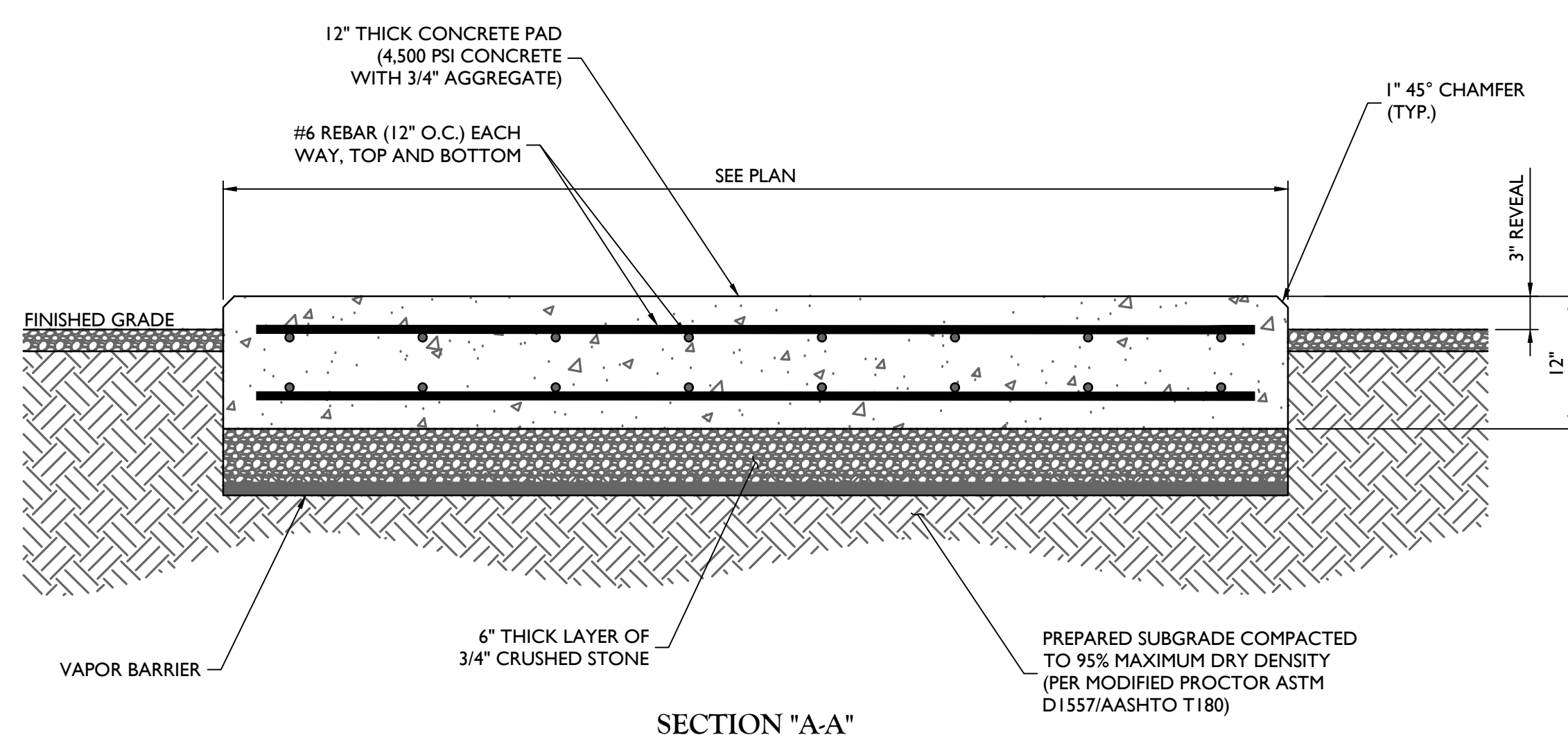
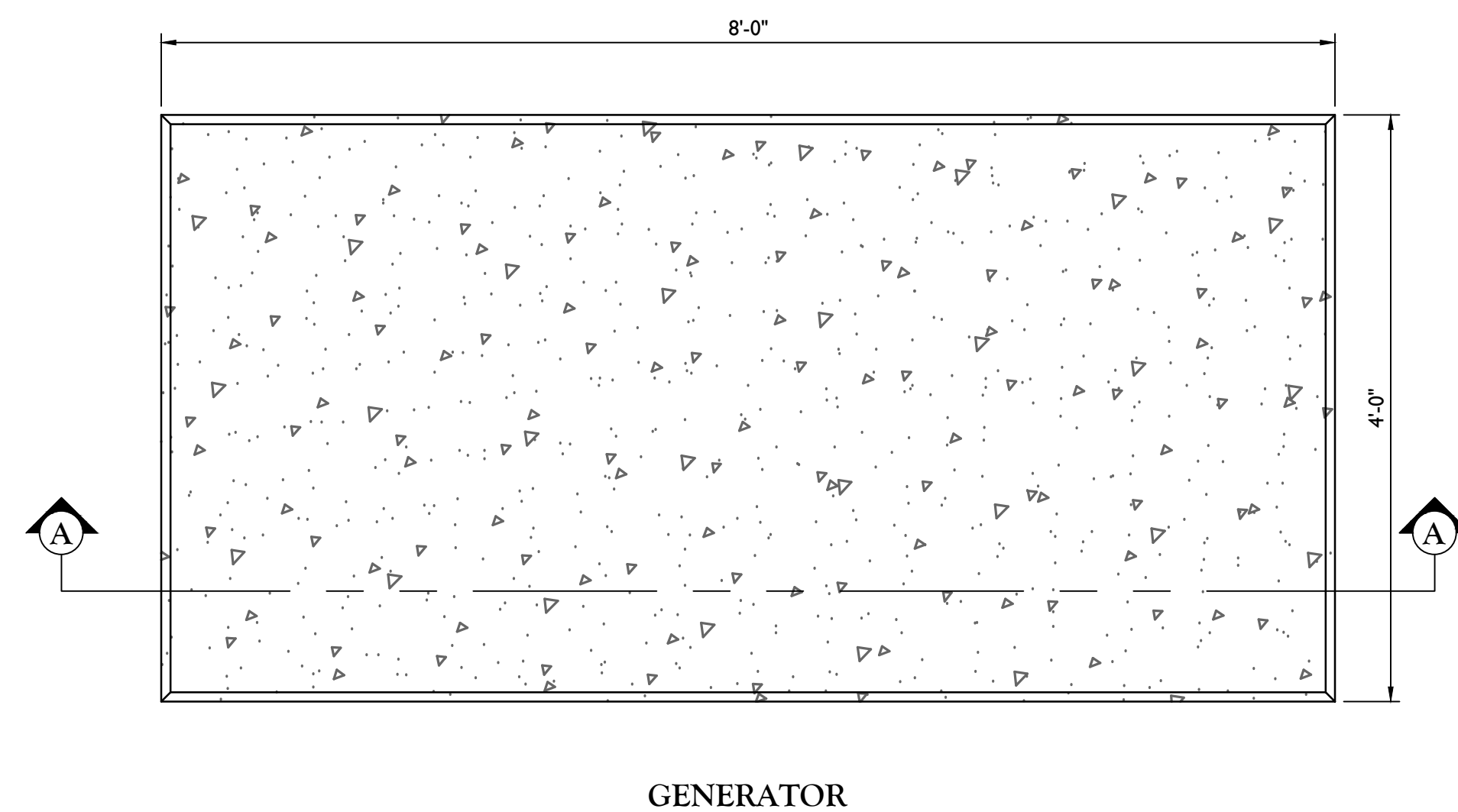
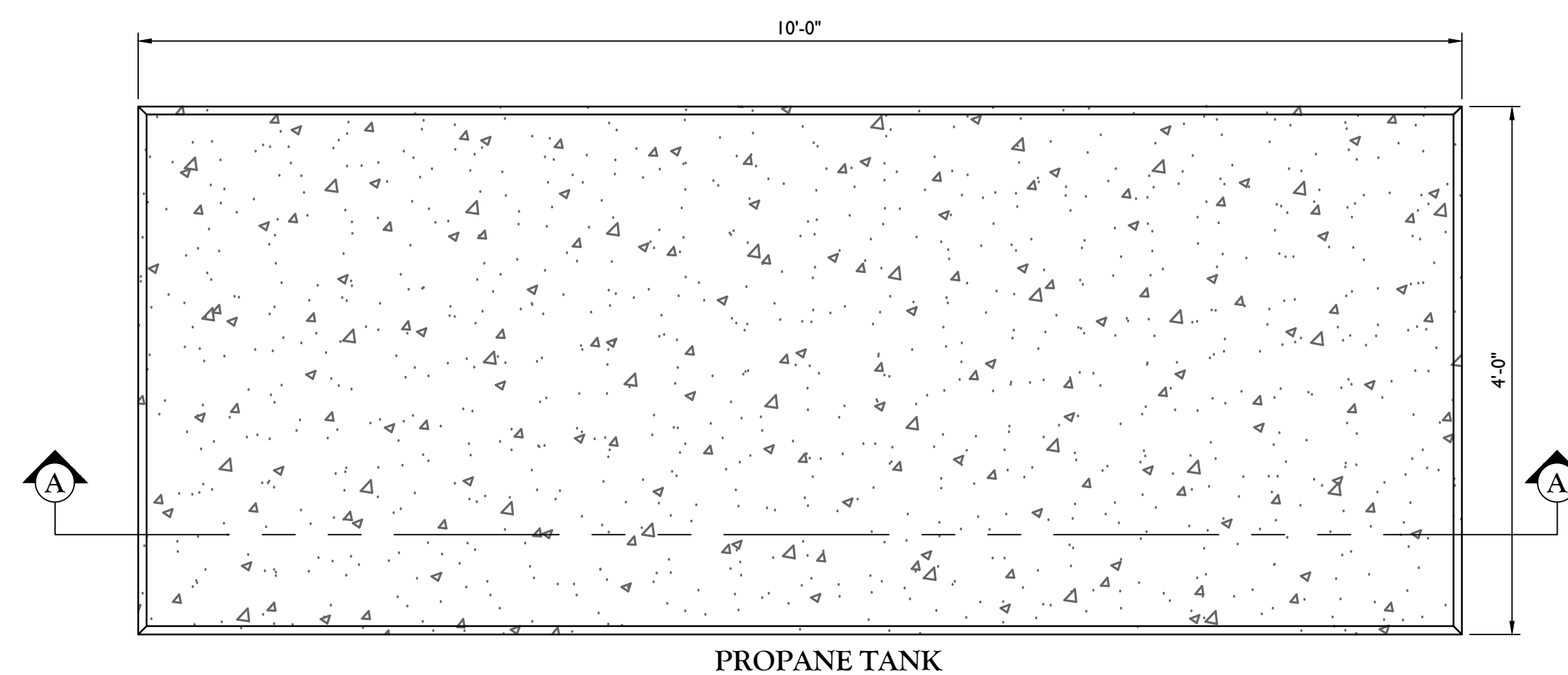


MT. LAUREL
2000 Midlantic Drive,
Suite 100
Mt. Laurel, NJ 08054
Phone: 856-797-0412
COLLIERS ENGINEERING & DESIGN, INC.
DOING BUSINESS AS MASER CONSULTING

SHEET TITLE:
CONSTRUCTION DETAILS

SHEET NUMBER:
A-6

NOTE: DO NOT SCALE DRAWINGS FOR CONSTRUCTION.



CONCRETE EQUIPMENT PAD DETAILS

DESIGN INFORMATION:

- I. ALL CONCRETE WORK SHALL BE IN ACCORDANCE WITH THE ACI 301, ACI 318, ACI 336A, ASTM A184, ASTM A185 AND THE DESIGN & CONSTRUCTION SPECIFICATION FOR CAST-IN-PLACE CONCRETE.

2. THE DESIGN SHALL CONFORM TO THE INTERNATIONAL BUILDING CODE AS SHOWN ON SHEET T-1.

EARTHWORK:

1. FOUNDATIONS HAVE BEEN DESIGNED TO BEAR ON (UNDISTURBED RESIDUAL SOILS/COMPACTED STRUCTURAL FILL), CAPABLE OF SAFELY SUPPORTING AN ALLOWABLE BEARING PRESSURE OF 1,500 PSF. IF FOUNDATION CONDITIONS PROVE UNACCEPTABLE AT ELEVATIONS SHOWN, EXCAVATION SHALL BE CARRIED DEEPER AND SHALL BE BACKFILLED WITH LEAN CONCRETE TO PLAN FOOTING BOTTOM, OR REDSIGN OF FOUNDATIONS WILL BE REQUIRED AT THE DIRECTION OF THE ENGINEER.

2. DESIGN FURNISH AND INSTALL TEMPORARY SHEETING, SHORING, AND DRAINAGE TO MAINTAIN THE EXCAVATION AND PROTECT SURROUNDING STRUCTURES AND UTILITIES.

3. THOROUGHLY COMPACT ALL BOTTOM OF FOOTINGS PRIOR TO PLACING ANY CONCRETE.

CONCRETE:

- I. FORMWORK
- I.a. CONCRETE CONSTRUCTION SHALL CONFORM TO "SPECIFICATIONS FOR STRUCTURAL CONCRETE FOR BUILDINGS." (ACI 301-89).
- I.b. FORMWORK SHALL CONFORM TO ACI 301 "SPECIFICATIONS FOR STRUCTURAL CONCRETE FOR BUILDINGS"

2. REINFORCEMENT
- 2.a. REINFORCING STEEL ASTM A615, GRADE 60. WELDED WIRE ASTM A185 (FLAT SHEET). LAPS 40 BAR DIAMETERS UNLESS NOTED. BARS SHALL BE SECURELY HELD IN ACCURATE POSITION BY SUITABLE ACCESSORIES, TIE BARS, SUPPORT BARS, ETC. HOOK LENGTHS SHALL BE 12 BAR DIAMETERS.
- 2.b. CONCRETE COVER FOR REINFORCING BARS SHALL BE AS FOLLOWS, UNLESS OTHERWISE NOTED.

- | | | |
|--------|---|--------|
| 2.b.1. | FOOTINGS AND SLABS CAST AGAINST GROUND | 3" |
| 2.b.2. | CONCRETE TO BE IN CONTACT WITH GROUND OR WEATHER AT BARS GREATER THAN 5" | 2" |
| 2.b.3. | AT BARS #5 OR LESS | 1 1/2" |
| 2.b.4. | CONCRETE NOT TO BE EXPOSED TO GROUND OR WEATHER BEAMS, GIRDERS, AND COLUMNS | 1 1/2" |
| 2.b.5. | SLABS AND WALLS | 3/4" |

- | | | | |
|----------|---|------|-----|
| 2.c. | CAST IN PLACE CONCRETE | | |
| 2.c.1. | MINIMUM 28 DAY CYLINDER STRENGTH AND MAXIMUM SLUMP, PRIOR TO ADDITION F SUPER PLASTICIZERS, AS FOLLOWS: | | |
| 2.c.1.1. | CLASS I FOOTINGS | 4500 | PSI |
| 2.c.1.2. | CLASS III INTERIOR ELEVATED SLABS AND WALLS | 4000 | PSI |
| 2.c.1.3. | CLASS V OTHER WORK | 4000 | PSI |
| 2.c.1.4. | CLASS VI LEAN CONCRETE FOR OVEREXCAVATION OF FOUNDATIONS | 2000 | PSI |

- 2.c.2. MIX DESIGN TO BE IN ACCORDANCE WITH ACI 318, CHAPTER 5. NO CALCIUM CHLORIDE ADMIXTURE CONTAINING CHLORIDES SHALL BE USED IN ANY CONCRETE

- 2.c.3. COARSE AGGREGATE FOR NORMAL WIEGHT CONCRETE SHALL CONFORM TO ASTM C33 SIZE #57.
COARSE AGGREGATE FOR LIGHTWEIGHT CONCRETE SHALL CONFORM TO ASTM C330 GRADED 3/4" TO 1 1/4".

- 2.c.4. COLD WEATHER PLACEMENT SHALL COMPLY WITH ACI 306.1

- 2.c.5. HOT WEATHER PLACEMENT SHALL COMPLY WITH ACI 305 R.

- 2.c.6. CHAMFER ALL EXPOSED EDGES 3/4"

- 2.c.7. THE MAXIMUM TEMPERATURE OF ALL CONCRETE AT DELIVERY TO THE SITE SHALL BE 85°F

- 2.c.8. TOTAL DELIVERY TIME SHALL BE LESS THAN 75 MINUTES.

www.colliersengineering.com

Copyright © 2023, Colliers Engineering & Design. All Rights Reserved. This drawing and all information contained herein is authorized for use only by the party for whom the services were contracted or to whom it is certified. This drawing may not be copied, reused, disclosed, distributed or relied upon for any other purpose without the express written consent of Colliers Engineering & Design.

Doing Business as  **MASER**
CONSULTING



CELLCO PARTNERSHIP d/b/a
VERIZON WIRELESS

512 TOWNSHIP LINE ROAD
BUILDING 2, FLOOR 3
BLUE BELL, PA 19422

FOR STATE SPECIFIC DIRECT PHONE NUMBERS VISIT:
WWW.CALL811.COM

SCALE:	JOB NUMBER:
AS SHOWN	22960035A

-	-	-	-	-	-
-	-	-	-	-	-
-	-	-	-	-	-
-	-	-	-	-	-
-	-	-	-	-	-
-	-	-	-	-	-
-	-	-	-	-	-
-	-	-	-	-	-
0	07/21/23	ISSUED FOR ZONING	MEG	MEG	
A	04/11/23	ISSUED FOR REVIEW	FAC	MEG	
REV	DATE	DESCRIPTION	DRAWN BY	CHECKED BY	

Matthew E. Graubart
 DELAWARE PROFESSIONAL ENGINEER
 LICENSE NO. 24147
 COLLIERIES ENGINEERING & DESIGN, INC.
 D.E. C. 2840

IT IS A VIOLATION OF LAW FOR ANY PERSON,
UNLESS THEY ARE ACTING UNDER THE DIRECTION
OF THE RESPONSIBLE LICENSED PROFESSIONAL
ENGINEER, TO ALTER THIS DOCUMENT.

SITE NAME:

DOV TIDEWATER
7 CLUBHOUSE DRIVE
OCEAN VIEW, DE 19970
SUSSEX COUNTY

Colliers
Engineering
& Design

MT. LAUREL
2000 Midlantic Drive,
Suite 100
Mt. Laurel, NJ 08054
Phone: 856.797.0412

COLLIERS ENGINEERING & DESIGN, INC.
DOMINIC D'AMICO, LEAD ENGINEER CONSULTING

SHEET TITLE :

CONSTRUCTION DETAILS

SHEET NUMBER :

A-7

NOTE: DO NOT SCALE DRAWINGS FOR CONSTRUCTION